



CPC Africa Desk InterTropical (ITF) Front Analysis

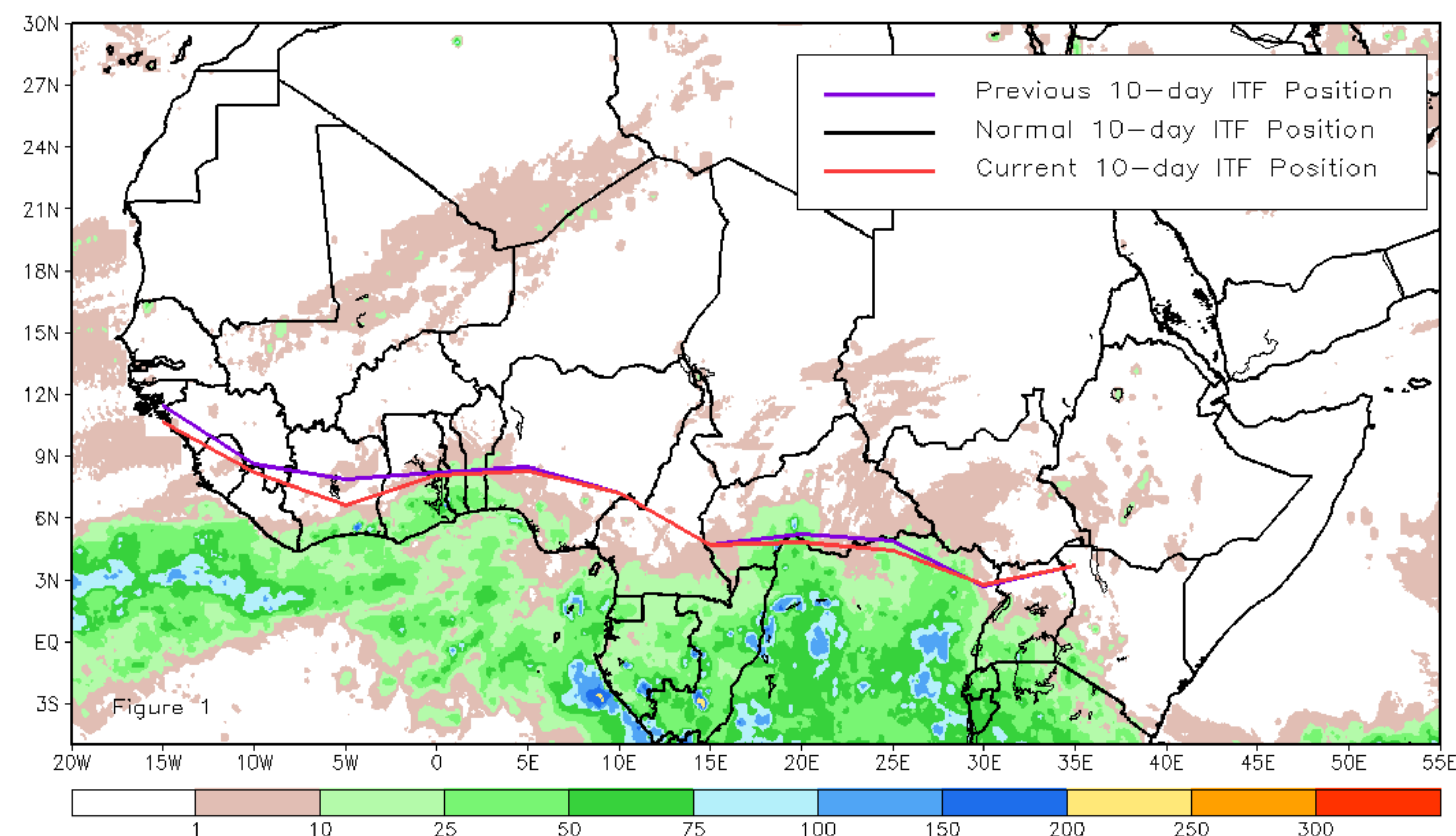
February 2025, Dekad 1

Discussion:

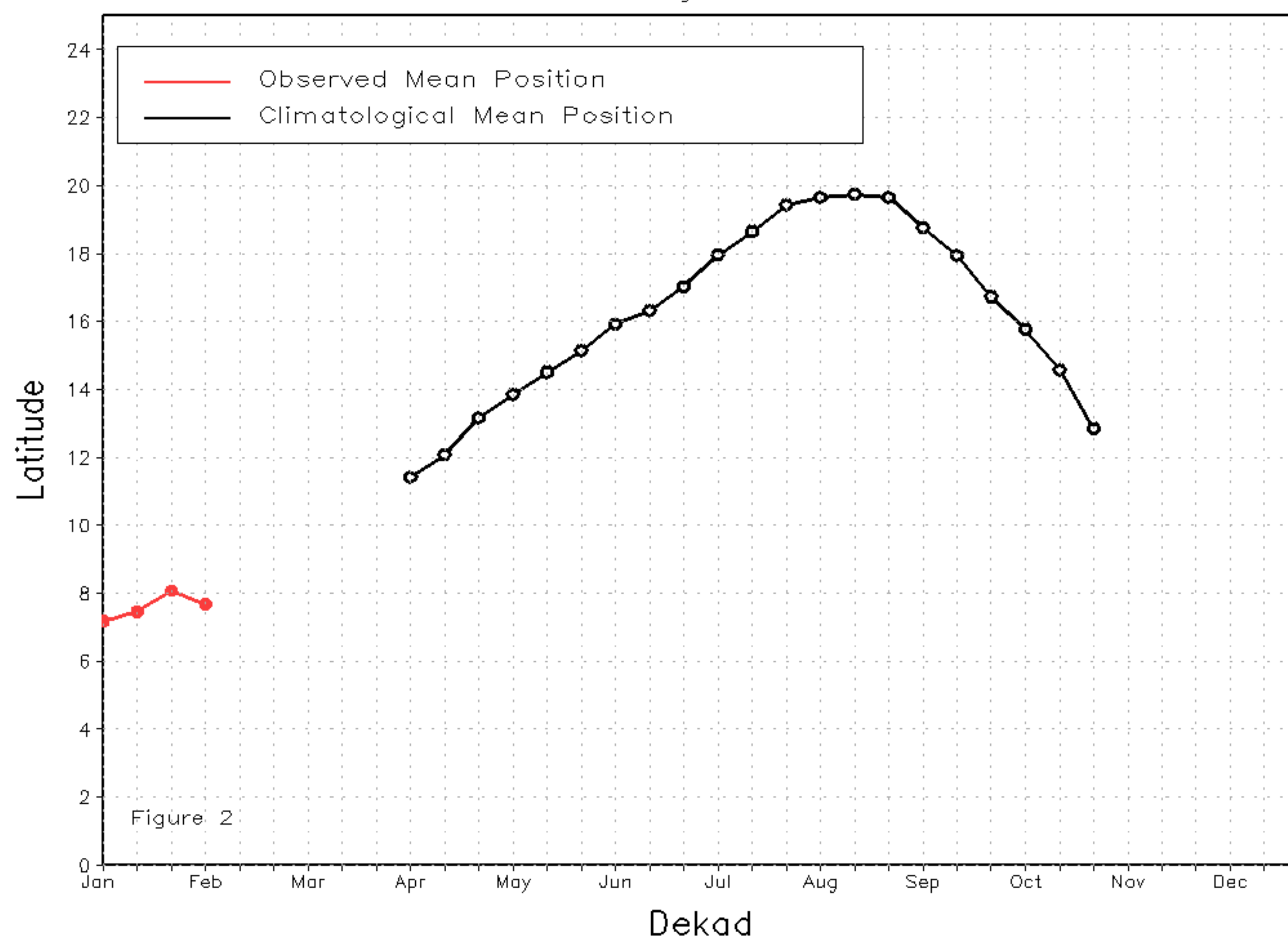
Between February 1 and 10, the current Inter-Tropical Front (ITF) moved southward along most of its length while maintaining its position over Cameroon and Uganda compared to its previous location. Specifically, the current ITF was located at approximately 7.7N in the western portion (10W-10E), which is south of its previous position at 8.1N. In the eastern part (20E-35E), the current ITF location is around 3.9N compared to 4.1N in the previous position. Figure 1 displays the current position of the ITF during the 1st dekad of February and its previous position during the 3rd dekad of January. Figures 2 and 3 are time series, illustrating the latitudinal positions for the western and eastern portions of the ITF, respectively, and their seasonal evolutions since the beginning of April 2025.

Current vs. Normal Dekadal ITF Position
and RFE Accumulated Precipitation (mm)

February 2025, Dekad 1



Mean Western Portion of the ITF: Averaged 10W to 10E
As of: February 2025, Dekad 1



Mean Eastern Portion of the ITF: Averaged 20E to 35E
As of: February 2025, Dekad 1

