



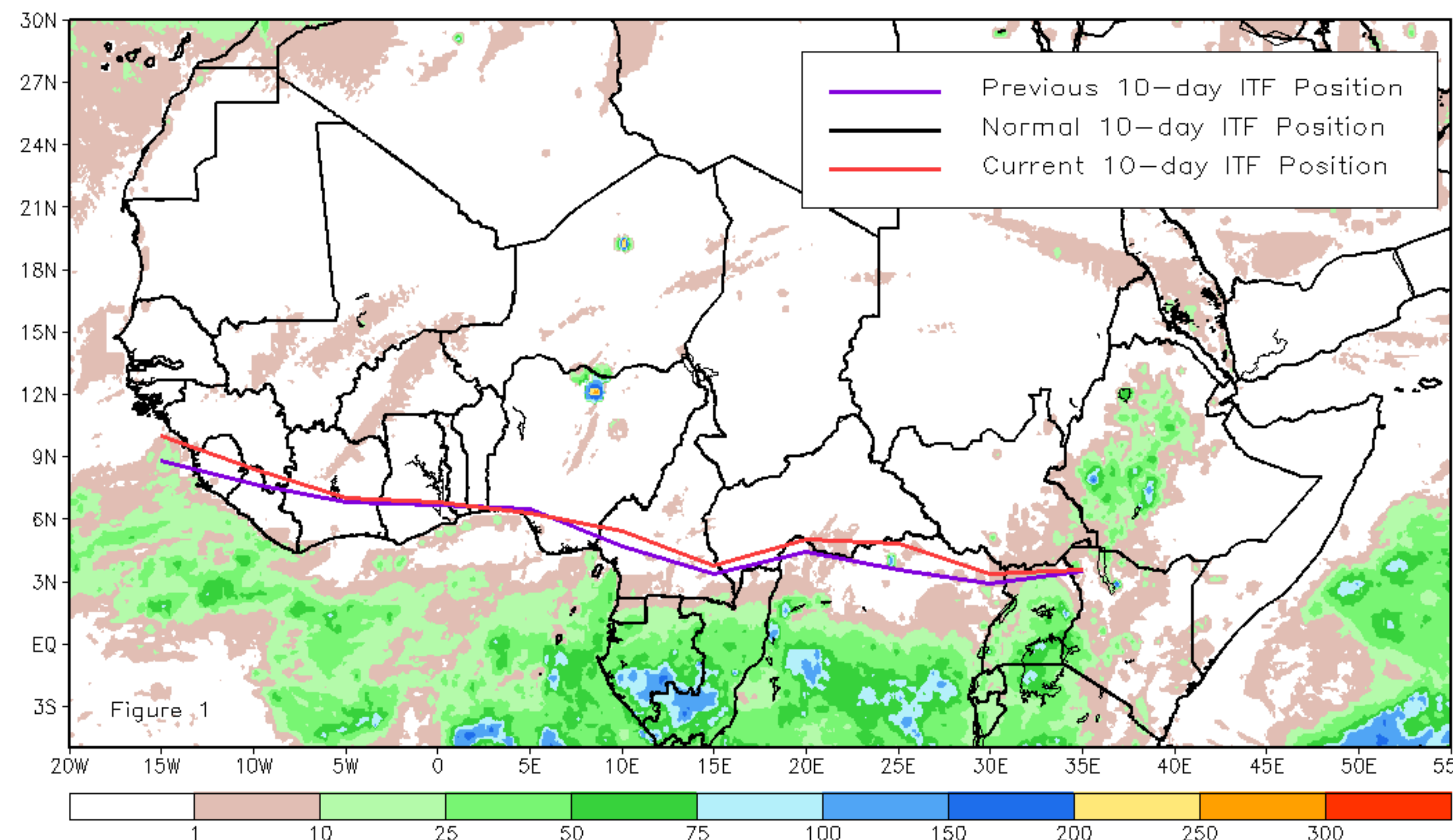
CPC Africa Desk InterTropical (ITF) Front Analysis

February 2024, Dekad 1

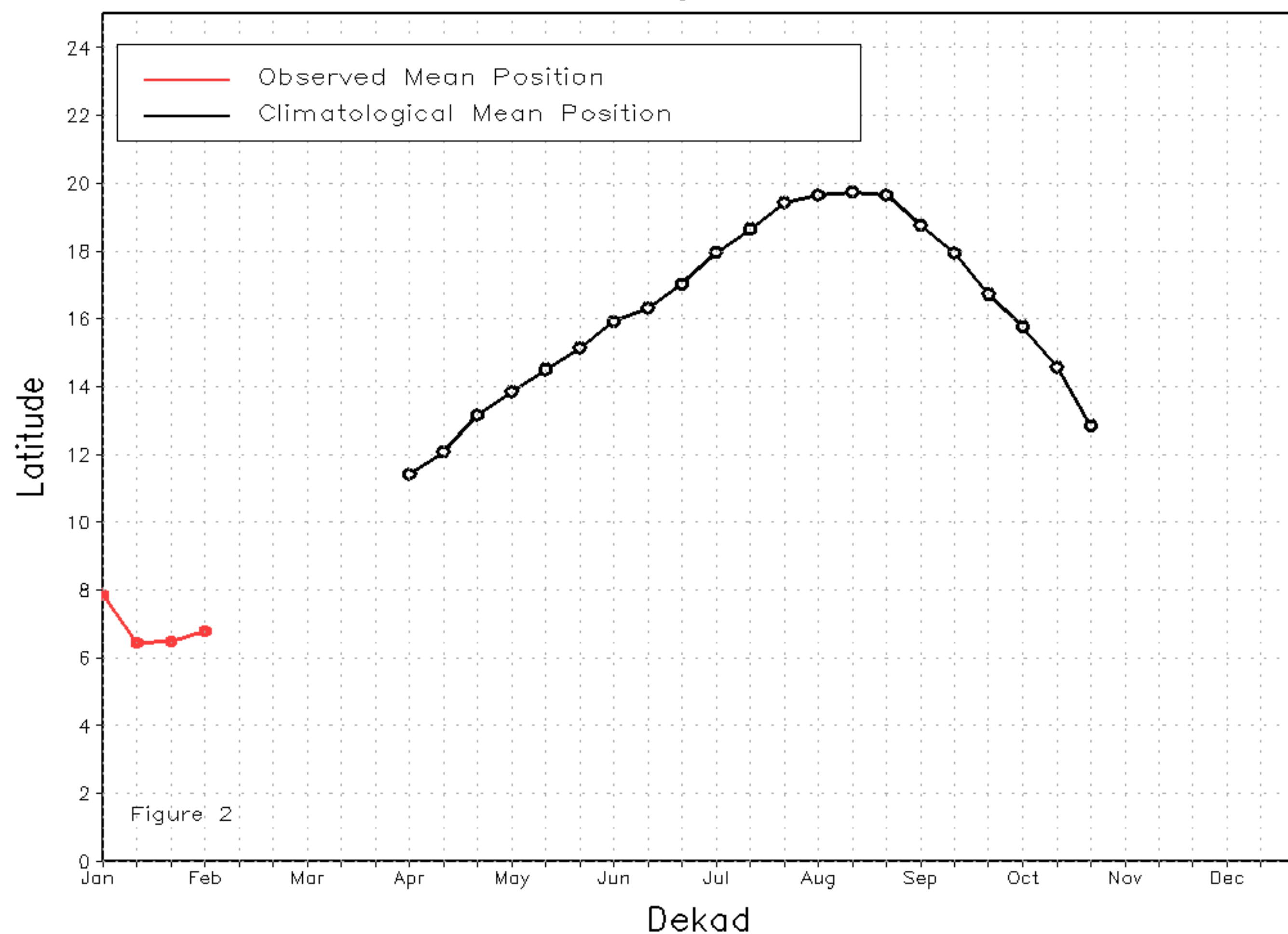
Discussion:

Between 1 and 10 February, the Inter-Tropical Front (ITF) moved north from its previous position. The current ITF is now located at approximately 6.8N in the western portion (10W-10E), which is north of its previous position at 6.5N. In the eastern part (20E-35E), the current ITF location is around 4.2N, compared to its previous position at 3.6N. Figure 1 displays the current position of the ITF during the 1st dekad of February and its previous position during the 3rd dekad of January. Figures 2 and 3 are time series, illustrating the latitudinal positions for the western and eastern portions of the ITF, respectively, and their seasonal evolutions since the beginning of April 2024.

Current vs. Normal Dekadal ITF Position
and RFE Accumulated Precipitation (mm)
February 2024, Dekad 1



Mean Western Portion of the ITF: Averaged 10W to 10E
As of: February 2024, Dekad 1



Mean Eastern Portion of the ITF: Averaged 20E to 35E
As of: February 2024, Dekad 1

