



# CPC Africa Desk InterTropical (ITF) Front Analysis

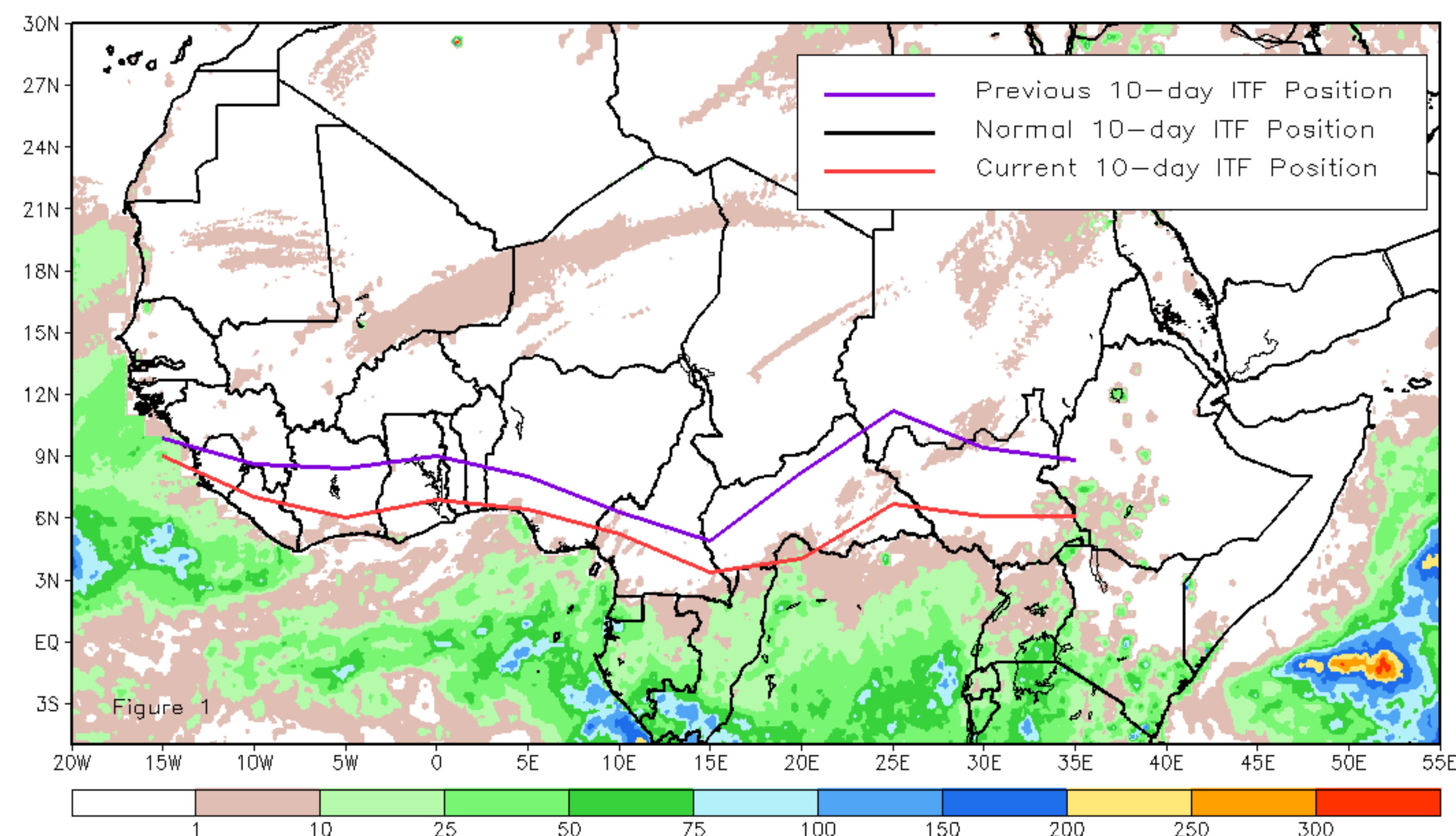
## December 2023, Dekad 2

### Discussion:

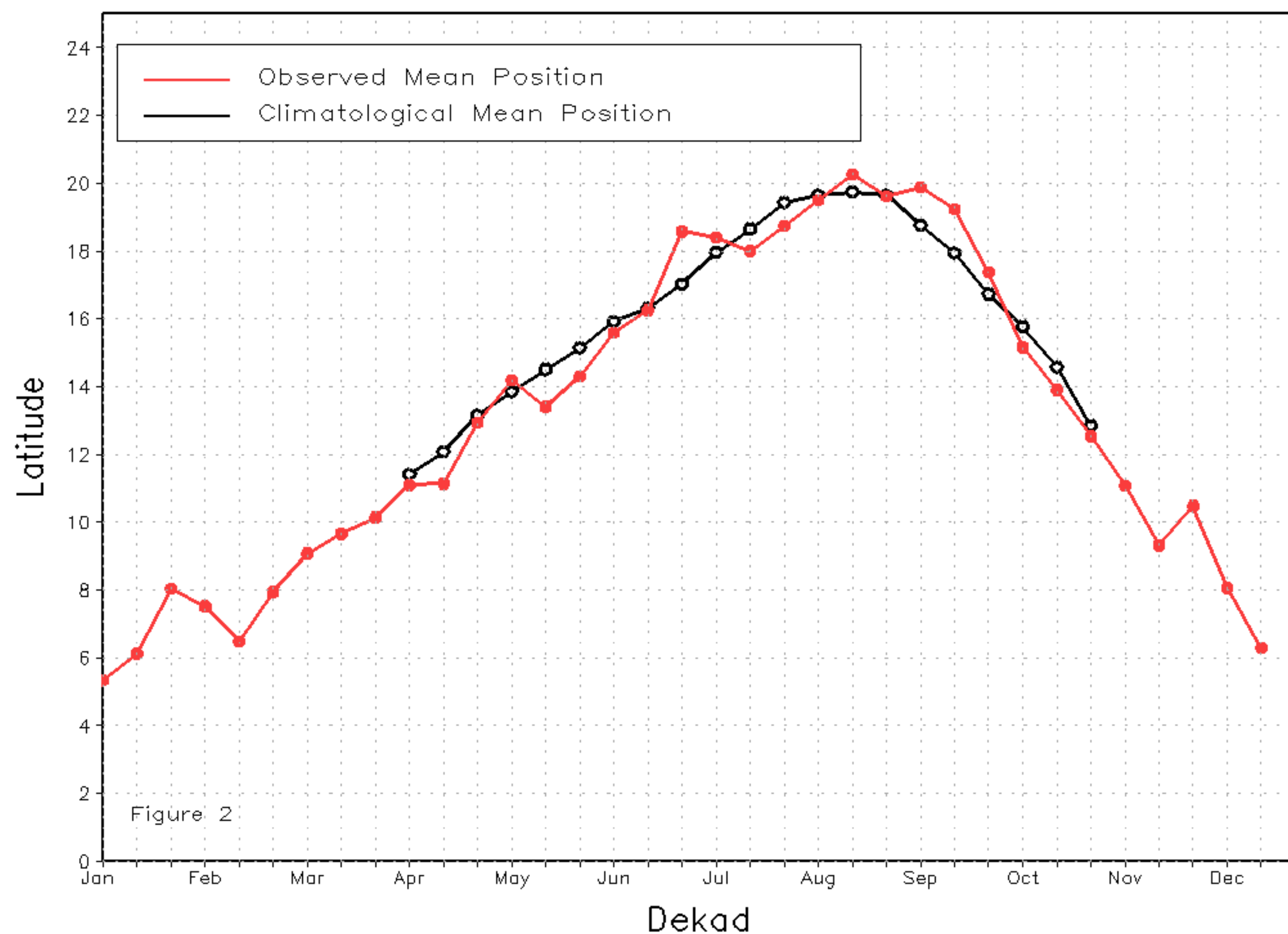
Between 11-20 December, the Inter-Tropical Front (ITF) moved south relative to the previous position along its entire length. Specifically, the current ITF was located at approximately 6.3N in the western portion (10W-10E), which is south of its previous position at 8.1N. In the eastern part (20E-35E), the current ITF location is around 5.7N compared to 9.4N in the previous position. Figure 1 displays the current position of the ITF during the 2nd dekad of December and its previous position during the 1st dekad of December. Figures 2 and 3 are time series, illustrating the latitudinal positions for the western and eastern portions of the ITF, respectively, and their seasonal evolutions since the beginning of April 2023.

Current vs. Normal Dekadal ITF Position  
and RFE Accumulated Precipitation (mm)

December 2023, Dekad 2



Mean Western Portion of the ITF: Averaged 10W to 10E  
As of: December 2023, Dekad 2



Mean Eastern Portion of the ITF: Averaged 20E to 35E  
As of: December 2023, Dekad 2

