



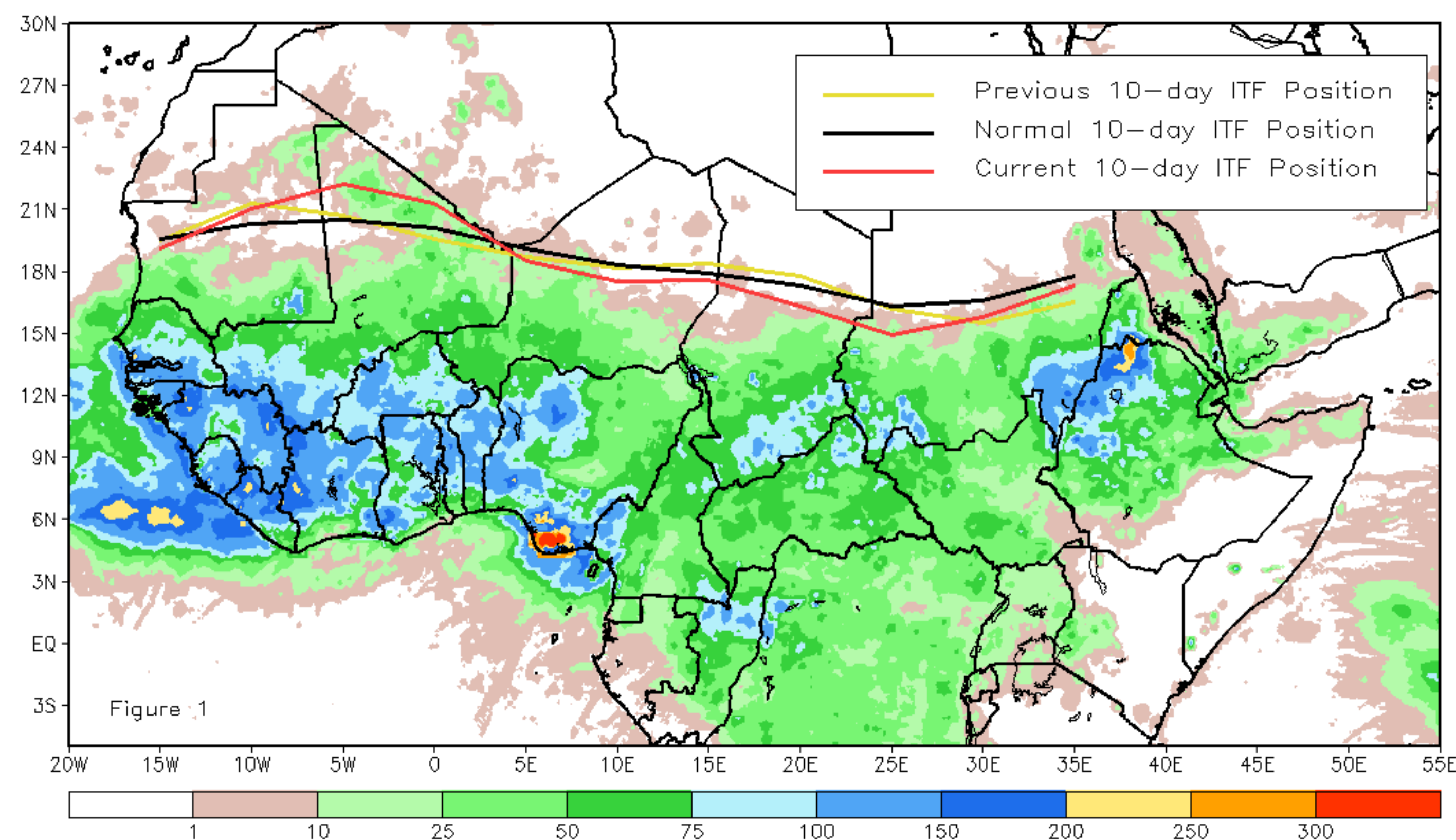
CPC Africa Desk InterTropical (ITF) Front Analysis

August 2021, Dekad 3

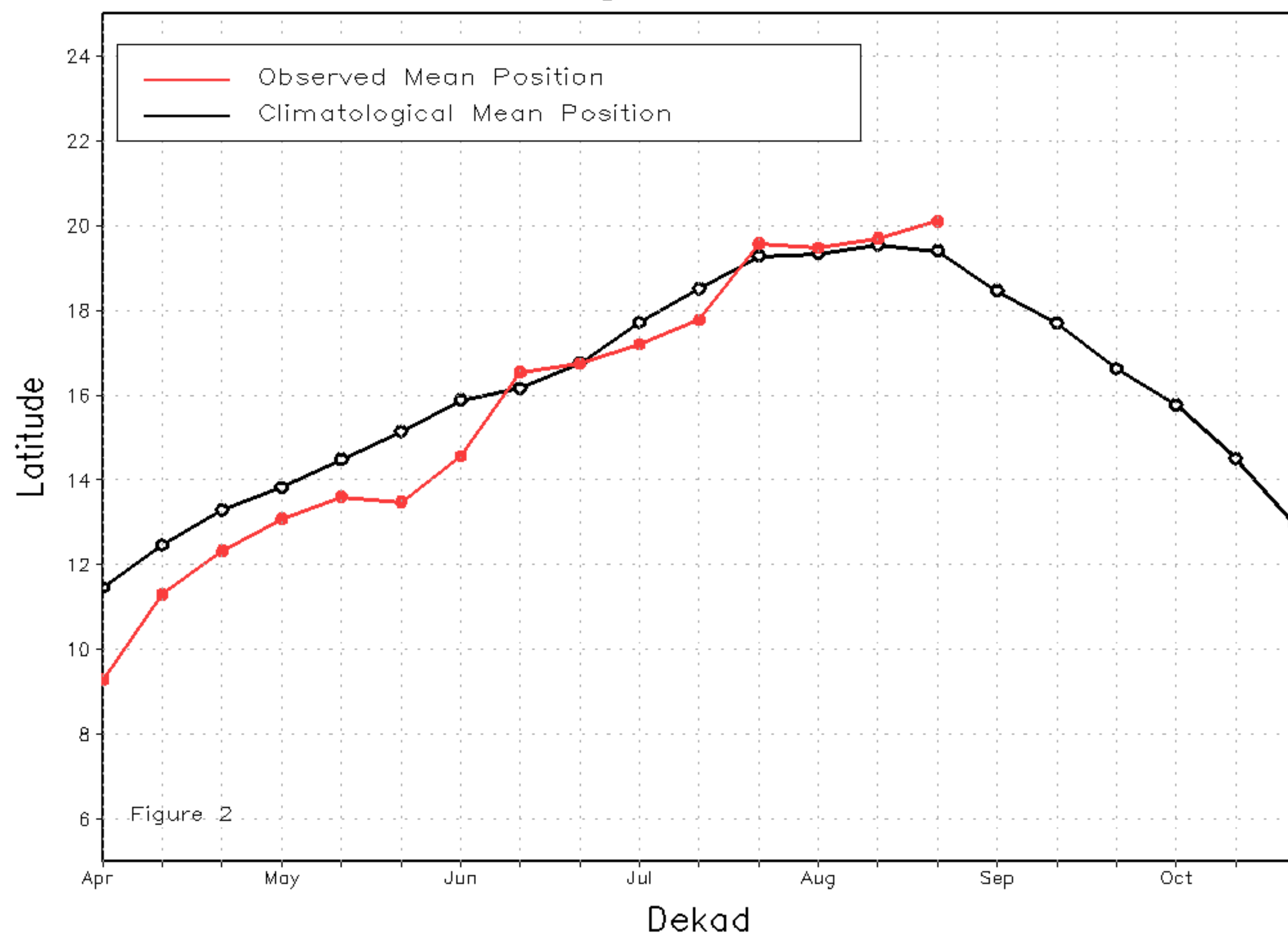
Discussion:

From 21-31 August, the ITF moved farther north along its western edge, whereas it continued its withdrawal southward along its eastern counterpart. The mean western (10W-10E) portion of the ITF was approximated at 20.1N, compared with last year located at 19.7N. The mean eastern (20E-35E) portion of the ITF was averaged at 16.1N, compared with the past year climatological position was centered over 17.0N. Figure 1 displays the current position of the ITF relative to the long-term average position during the 3rd dekad of August and its previous position during the 2nd dekad of August. Figures 2 and 3 are time series, illustrating the latitudinal values of the western and eastern portions of the ITF, respectively, and their seasonal evolutions since the beginning of April, 2021.

Current vs. Normal Dekadal ITF Position
and RFE Accumulated Precipitation (mm)
August 2021, Dekad 3



Mean Western Portion of the ITF: Averaged 10W to 10E
As of: August 2021, Dekad 3



Mean Eastern Portion of the ITF: Averaged 20E to 35E
As of: August 2021, Dekad 3

