



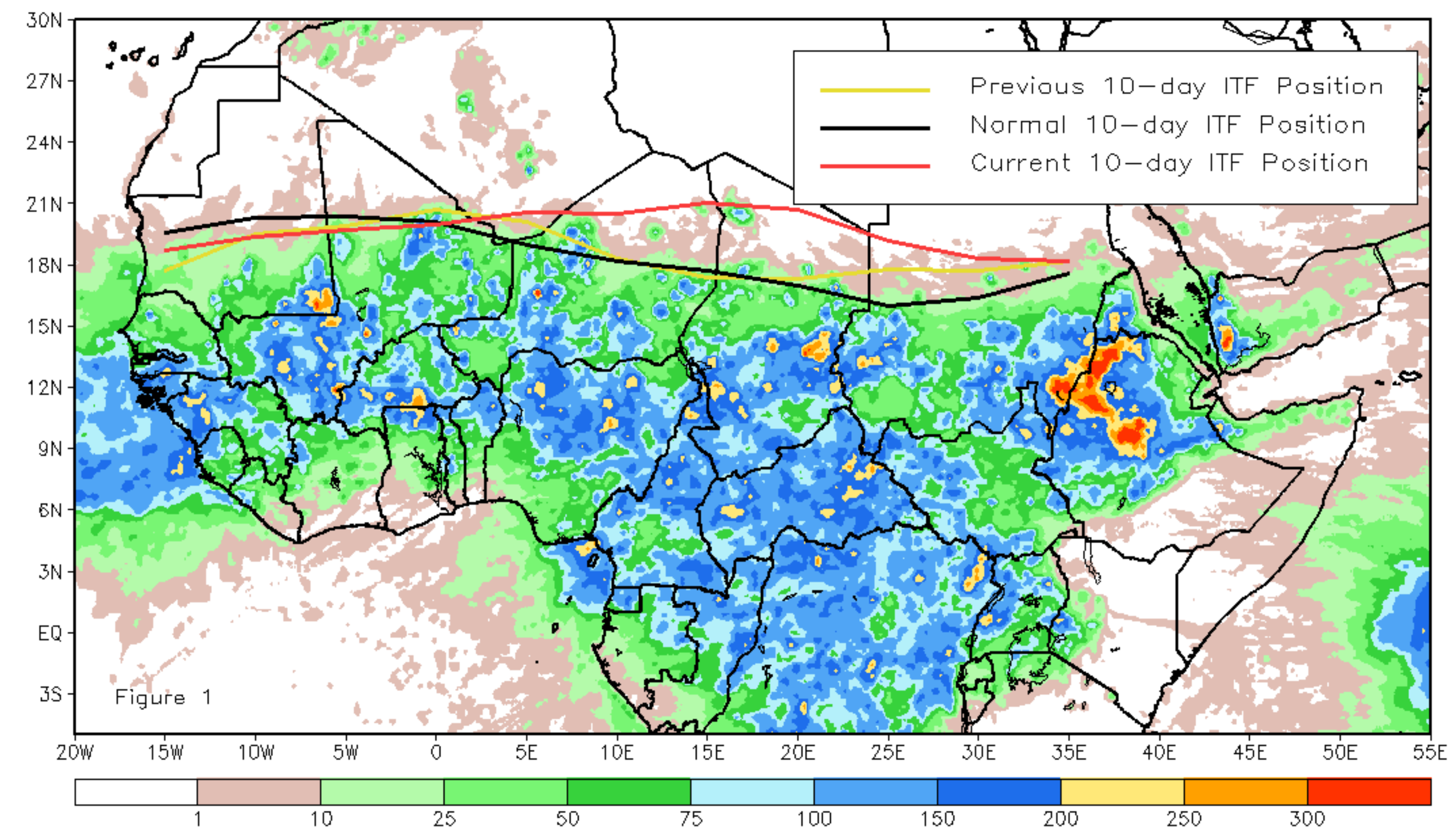
# CPC Africa Desk InterTropical (ITF) Front Analysis

## August 2020, Dekad 3

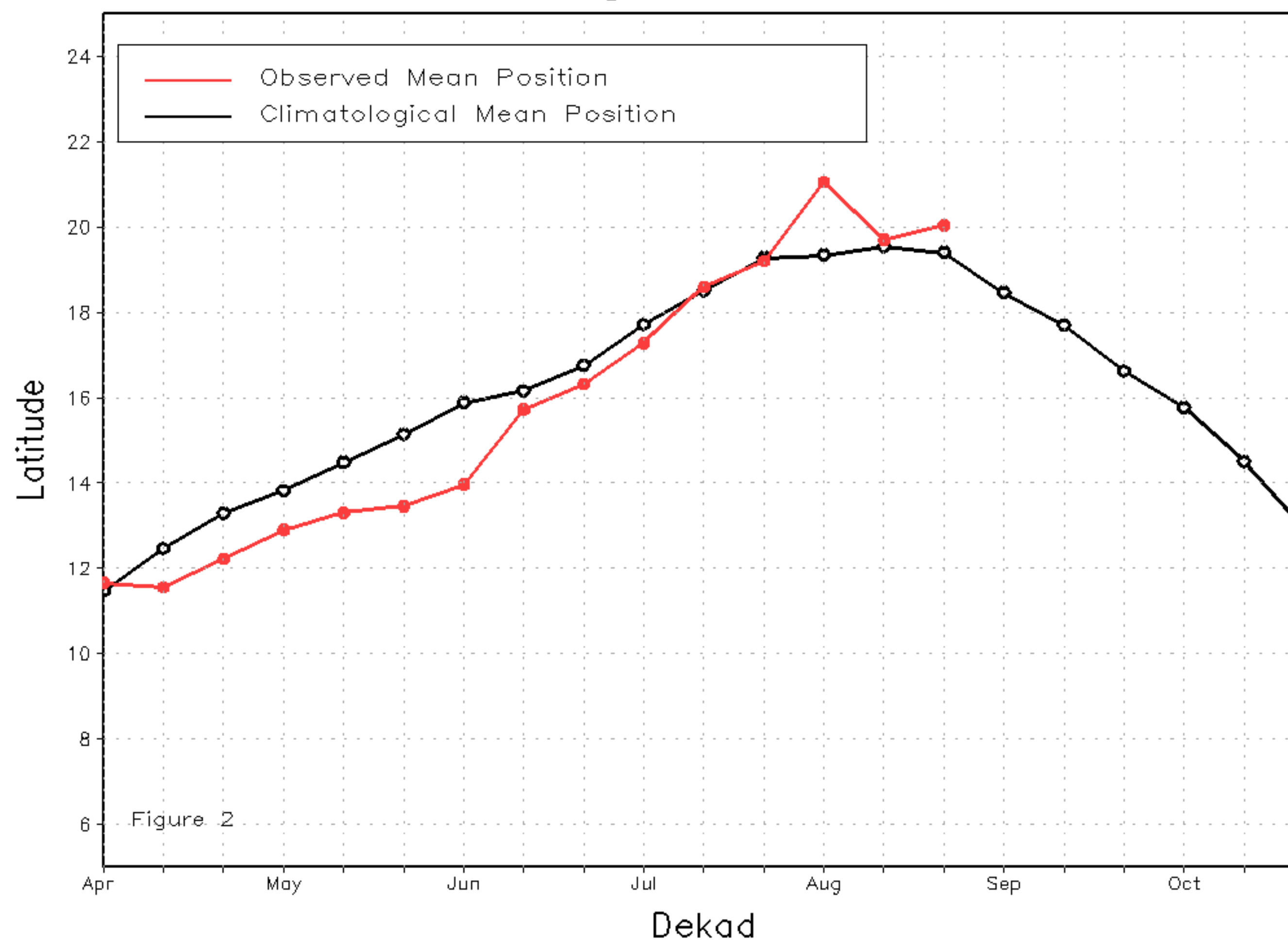
### Discussion:

From August 21-31, the ITF reversed direction and returned northward. It laid well to the north of the climatological average position along most of its length. The mean western (10W-10E) portion of the ITF was approximated at 21.0N, which was north of the mean position 1.4 degrees and 1.3 degrees north of its position the previous dekad. This anomalous position resulted in enhanced rains over central areas of Mali and Niger. The mean eastern (20E-35E) portion of the ITF was located at 18.5N, which was well to the north of the mean position by 1.7 degrees and .7 degree north of its position the previous dekad. This abnormal northerly position for the ITF led to heavy rains over Chad, Sudan, and northern Ethiopia. Figure 1 shows the current position of the ITF relative to the climatological position during the 3rd dekad of August and its previous position during the 2nd dekad of the month. Figures 2 and 3 are time series, illustrating the latitudinal values of the western and eastern portions of the ITF, respectively, and their seasonal evolutions since April, 2020.

Current vs. Normal Dekadal ITF Position  
and RFE Accumulated Precipitation (mm)  
August 2020, Dekad 3



Mean Western Portion of the ITF: Averaged 10W to 10E  
As of: August 2020, Dekad 3



Mean Eastern Portion of the ITF: Averaged 20E to 35E  
As of: August 2020, Dekad 3

