



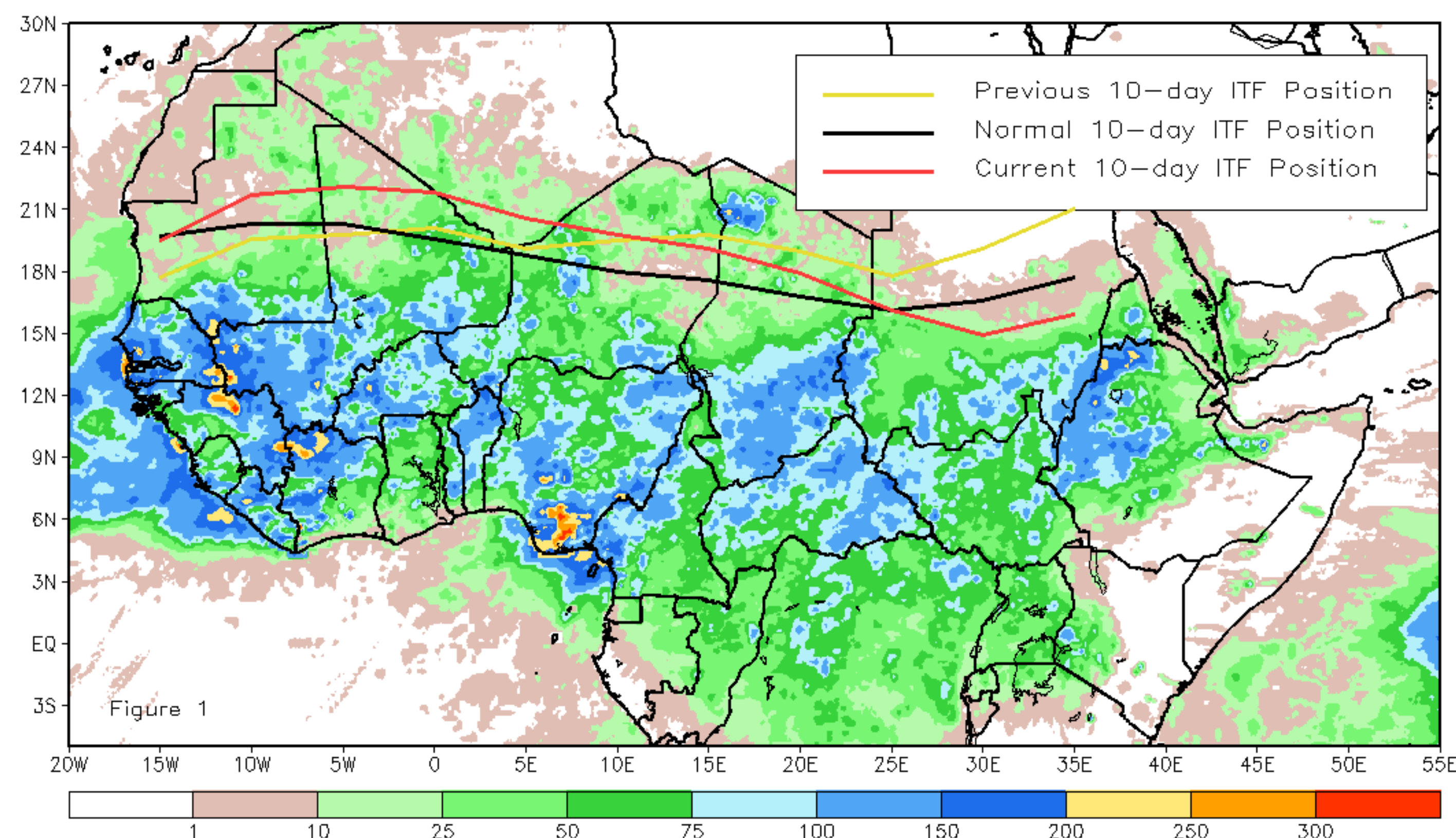
# CPC Africa Desk InterTropical (ITF) Front Analysis

## August 2019, Dekad 3

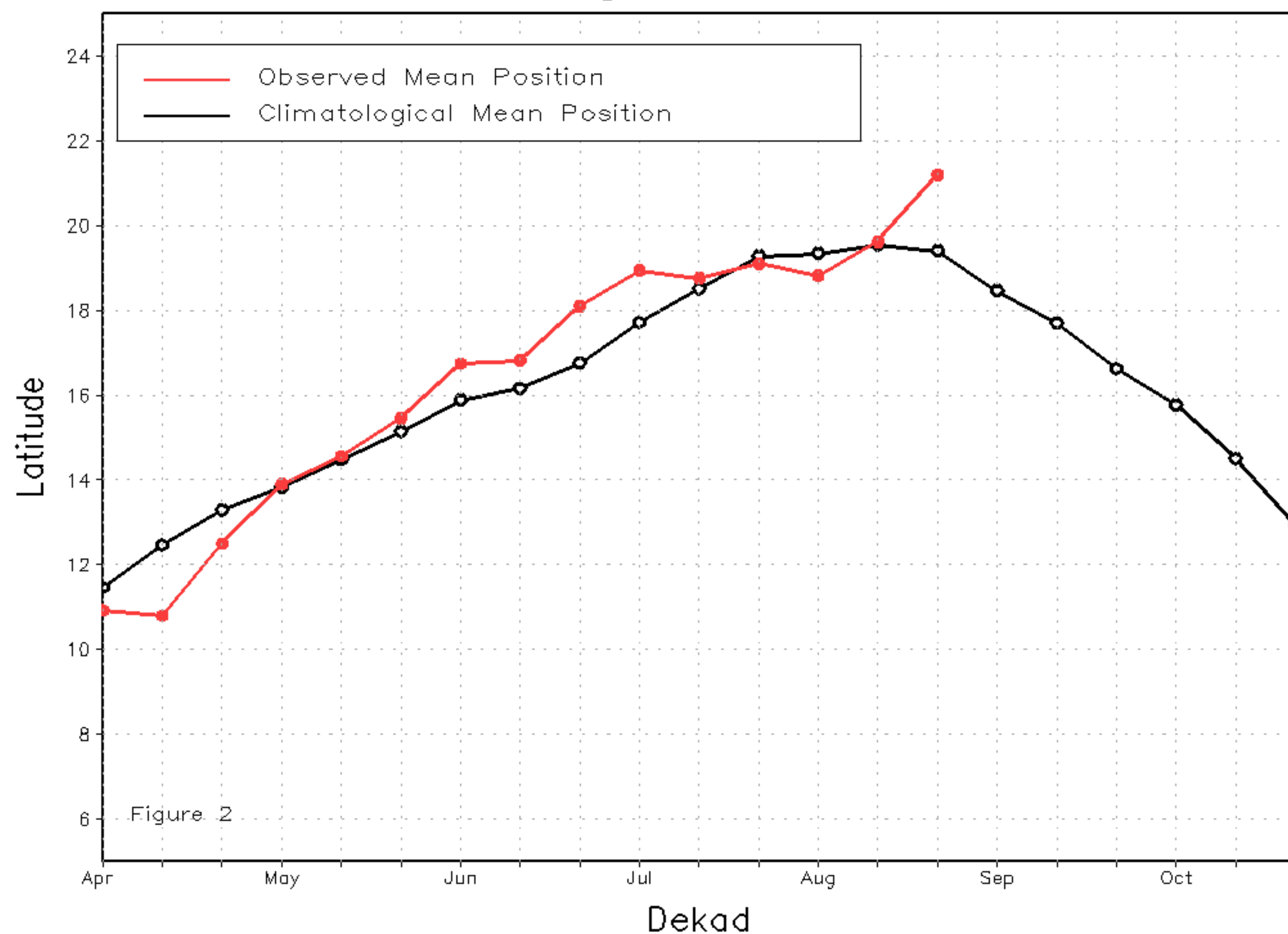
### Discussion:

From August 21-31, the ITF has straightened in far-west while it has moved southward in the far-east of northern Africa compared to the previous decade. The mean position of the ITF is approximated at 21.2 between 10W-10E, which represents a slight northward movement compared to the previous decade. Between 15W-25E, the ITF moved northward compared to the normal position which could explain the enhancement of rain experienced over Senegal and south Mauritania. Between 25E-35E, the ITF has moved significantly southward more at 30E. As a result, below average rainfall was observed over the central-eastern part of Sudan. The north-movement of the ITF in the far-western Africa could explained the flood and landslides reported over Mauritania, Senegal, southern Morocco. The pick in the far-eastern ITF also could explained the flood and landslides in Kenya and Uganda. Figure 1 shows the current position of the ITF relative to the long-term average position during the 3rd dekad of August and its previous position during the 2nd dekad of August. Figures 2 and 3 are time series, illustrating the latitudinal values of the western and eastern portions of the ITF, respectively, and their seasonal evolutions since April, 2019.

Current vs. Normal Dekadal ITF Position  
and RFE Accumulated Precipitation (mm)  
August 2019, Dekad 3



Mean Western Portion of the ITF: Averaged 10W to 10E  
As of: August 2019, Dekad 3



Mean Eastern Portion of the ITF: Averaged 20E to 35E  
As of: August 2019, Dekad 3

