



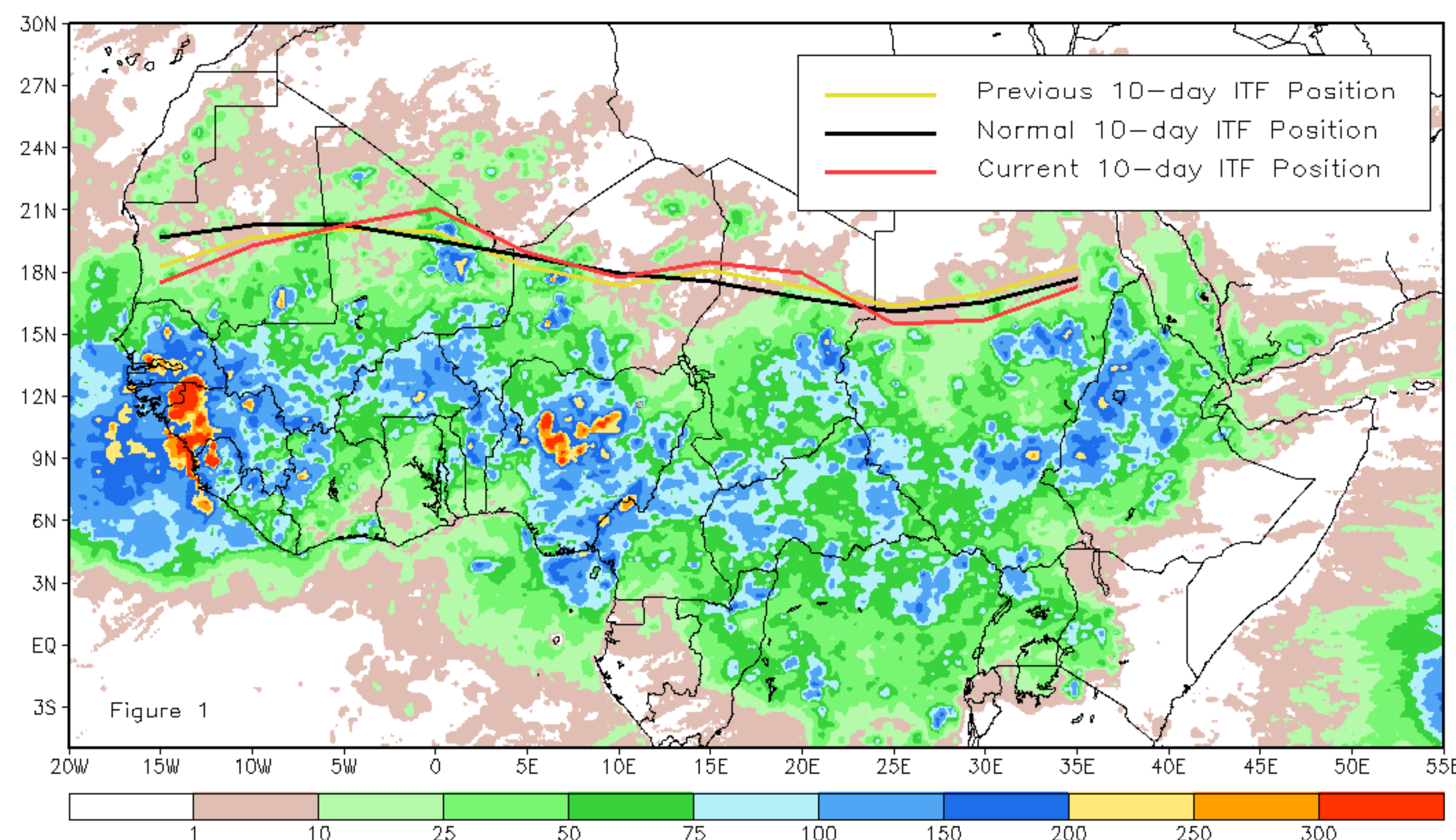
# CPC Africa Desk InterTropical (ITF) Front Analysis

## August 2017, Dekad 3

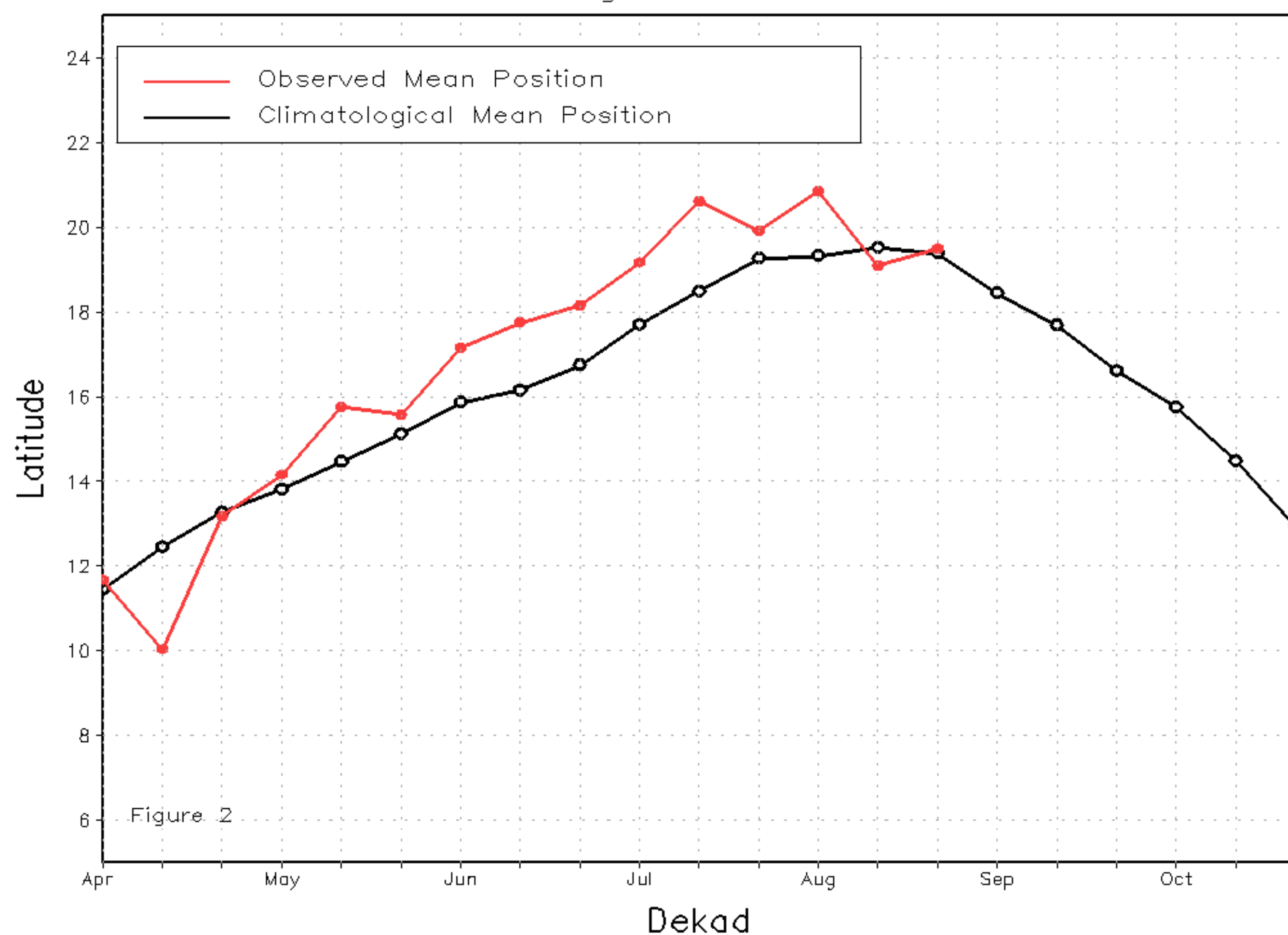
### Discussion:

From August 21-31, the ITF continued its equatorward retreat sluggishly. The mean western (10W-10E) portion of the ITF was approximated at 19.5 degrees N and was slightly to the north of the mean position by 0.1 degree. This resulted in heavy and above-average rain over eastern Burkina Faso and western Niger. Meanwhile, the mean eastern (20E-35E) portion of the ITF was located at 16.6 degrees N and was to the south of the average position by 0.2 degree. The near-average position of the ITF resulted in average to above-average rain over western and eastern Sudan. Figure 1 shows the current position of the ITF relative to its climatological position during the 3rd dekad of August and its previous position during the 2nd dekad of August. Figures 2 and 3 are time series, illustrating the mean latitudinal values of the western and eastern portion of the ITF, respectively, and their evolutions since April, 2017.

Current vs. Normal Dekadal ITF Position  
and RFE Accumulated Precipitation (mm)  
August 2017, Dekad 3



Mean Western Portion of the ITF: Averaged 10W to 10E  
As of: August 2017, Dekad 3



Mean Eastern Portion of the ITF: Averaged 20E to 35E  
As of: August 2017, Dekad 3

