



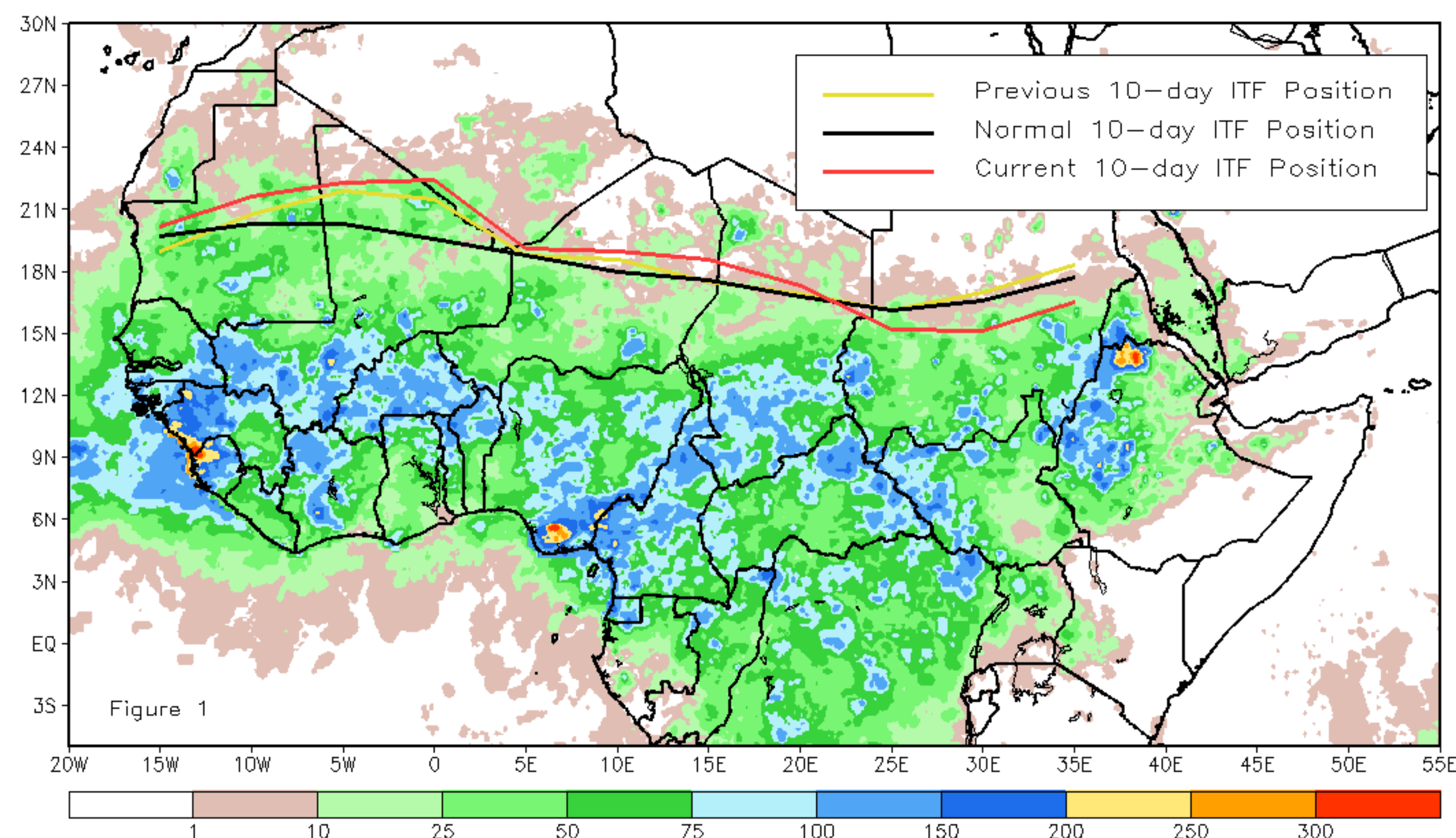
CPC Africa Desk InterTropical (ITF) Front Analysis

August 2016, Dekad 3

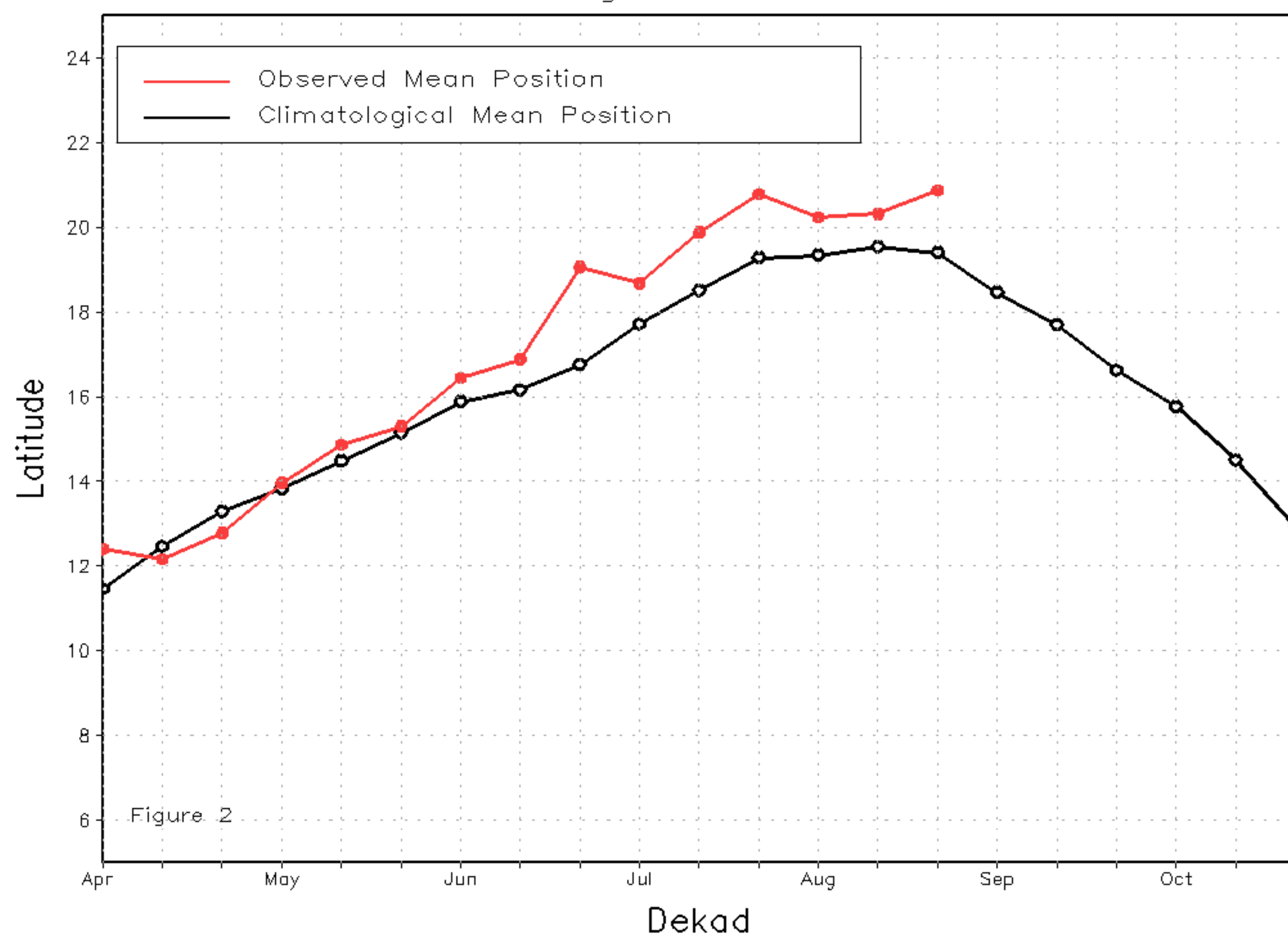
Discussion:

From August 21-31, the ITF remained farther north and above the long-term mean position across the western portions of Africa, while it began its southward retreat across its eastern counterparts. From 10W-10E, the mean position of the ITF was located approximately at 20.9N, which was anomalously north of the average position by 1.5 degrees. From 20E-35E, the mean position of the ITF was located at 16N, which was to the south of the climatological position by 0.8 degree. Figure 1 shows the current position of the ITF relative to its climatological position during the 3rd dekad of August, and its previous location during the 2nd dekad of August. Figures 2 and 3 are time series, illustrating the mean latitudinal values of the western and eastern portions of the ITF, respectively, and their evolutions since April, 2016.

Current vs. Normal Dekadal ITF Position
and RFE Accumulated Precipitation (mm)
August 2016, Dekad 3



Mean Western Portion of the ITF: Averaged 10W to 10E
As of: August 2016, Dekad 3



Mean Eastern Portion of the ITF: Averaged 20E to 35E
As of: August 2016, Dekad 3

