



CPC Africa Desk InterTropical (ITF) Front Analysis

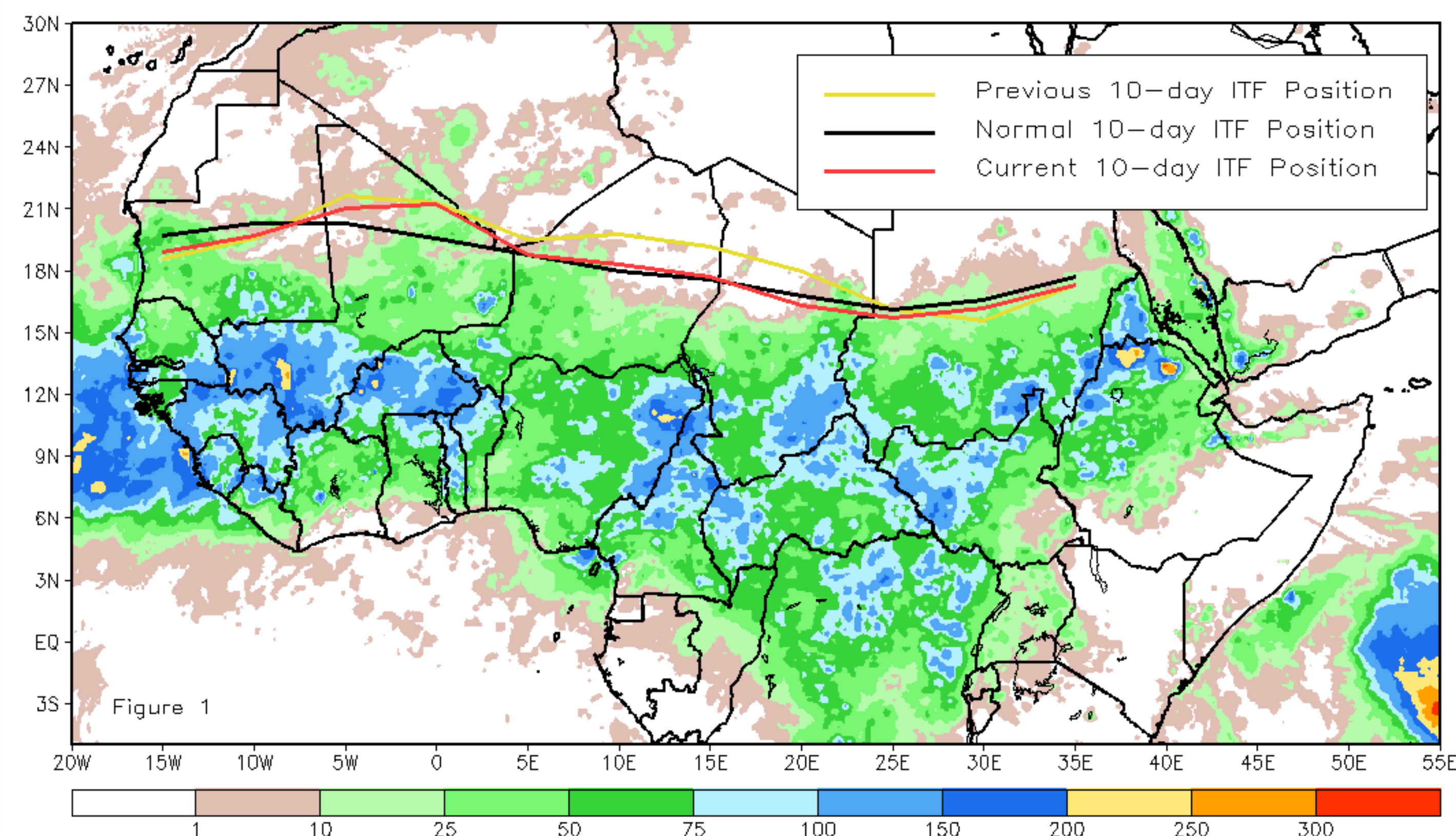
August 2015, Dekad 3

Discussion:

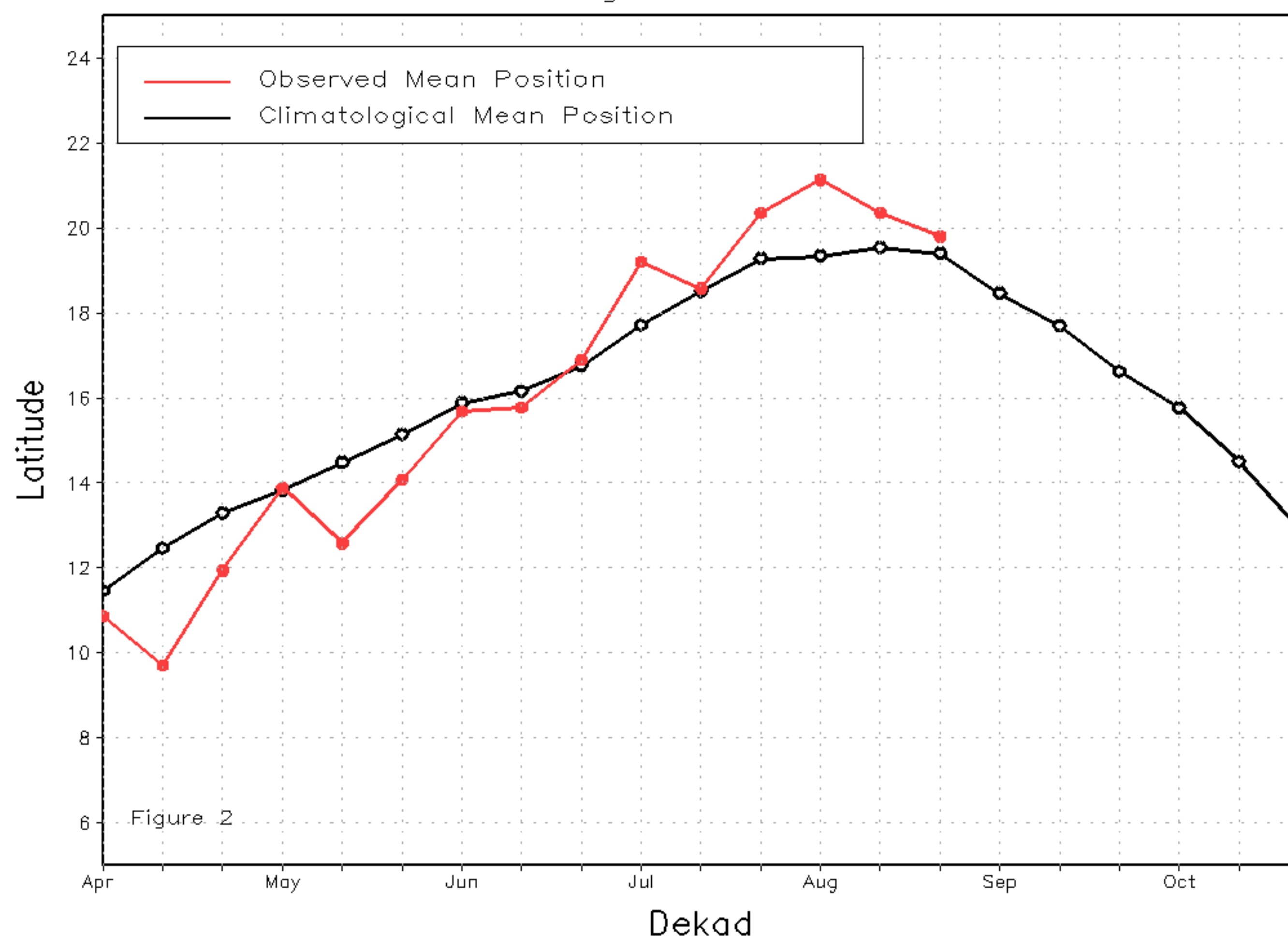
During the third dekad of August, the general position of the ITF slightly withdrew from its previous position in mid-August, but remained above-average in latitude compared to climatology. The mean western portion of the ITF (10W-10E) was approximated at 19.8 degrees N, still above the normal climatological position (19.4) for the end of August. The position in the west was still anomalously high enough to trigger well-distributed rainfall across much of the northern Sahelian regions of Mauritania, Mali and Niger. The mean eastern portion of the ITF (20E-35E) was approximated at 16.4 degrees North, remaining below the normal climatological position (16.8) for the end of August. The slight ITF suppression was evenly distributed over western Sudan and Chad. Figure 1 illustrates the current position of the ITF relative to its climatological position during the third dekad of August, and its previous position during the second dekad of August. Figures 2 and 3 are time series, illustrating the mean latitudinal values of the western and eastern portions of the ITF, respectively, and their evolution since April, 2015.

Current vs. Normal Dekadal ITF Position
and RFE Accumulated Precipitation (mm)

August 2015, Dekad 3



Mean Western Portion of the ITF: Averaged 10W to 10E
As of: August 2015, Dekad 3



Mean Eastern Portion of the ITF: Averaged 20E to 35E
As of: August 2015, Dekad 3

