



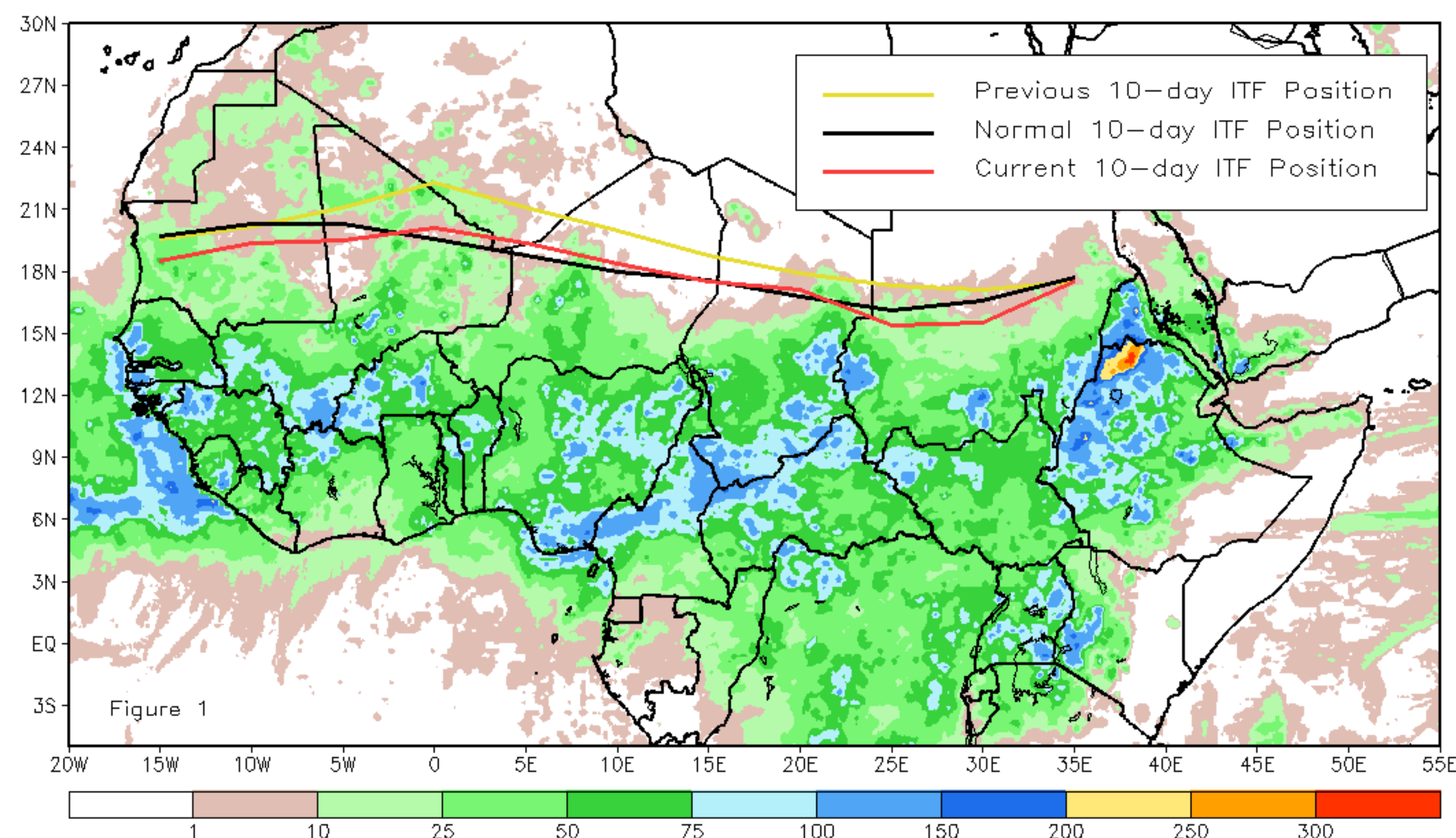
CPC Africa Desk InterTropical (ITF) Front Analysis

August 2014, Dekad 3

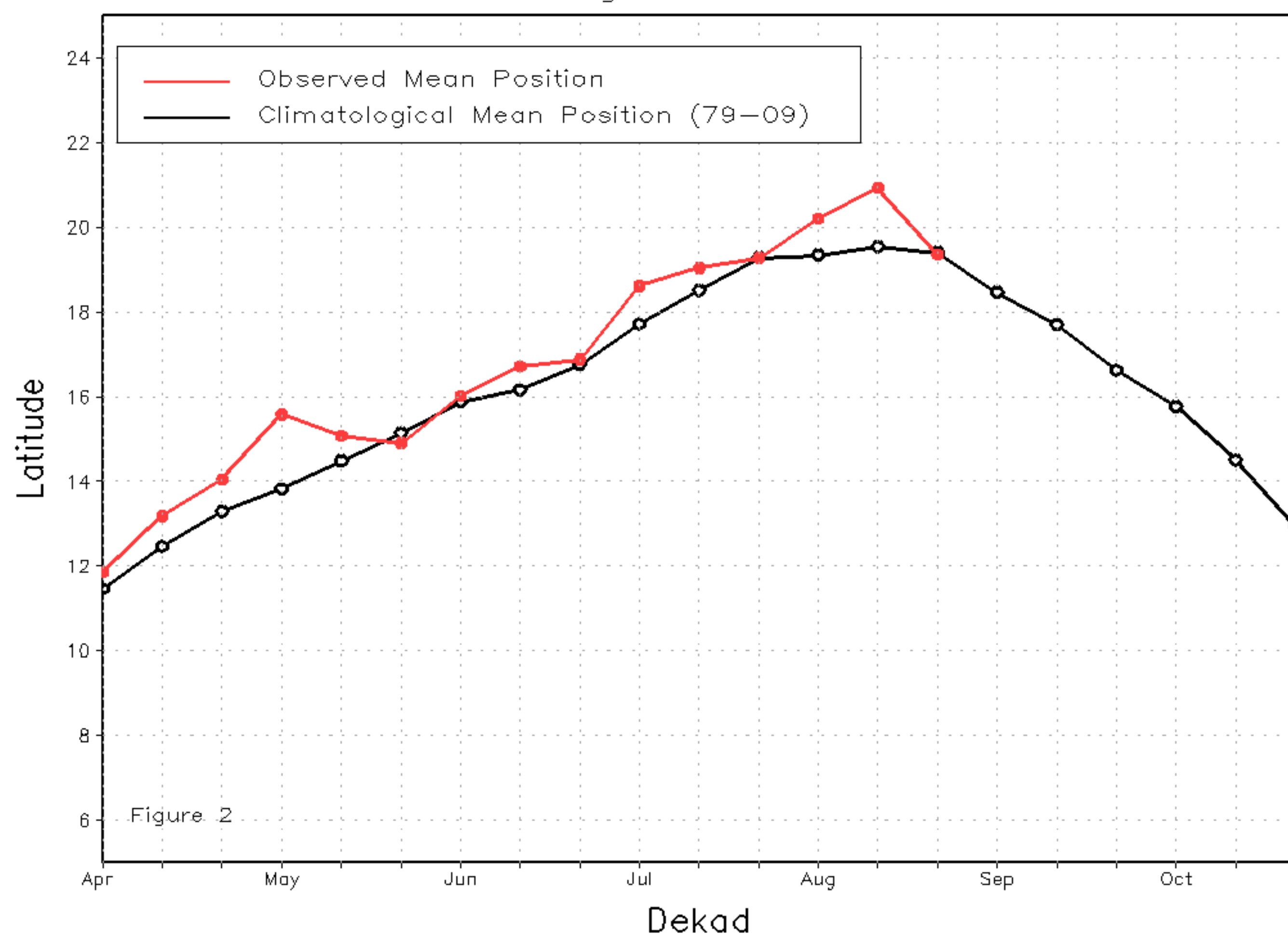
Discussion:

From August 20-31, 2014, the ITF in both eastern and western sections of Africa progressed equatorward, potentially indicating a cessation of poleward movement of the ITF for the season. The mean western portion of the ITF (10W to 10E) was approximated at 19.3N, which was 0.1 degrees south of the climatological average position and 1.6 degrees south of the previous dekads position. While the ITF was located well south of the previous dekads position, it was close to climatology, resulting in around seasonal rainfall amounts across the Sahel. The mean eastern portion of the ITF (20E to 35E) was approximated at 16.4N, which is 0.4 degrees south of the mean climatological position and 1.1 degrees south of the previous dekads position. This marked the second consecutive dekad where the ITF progressed equatorward after reaching a peak poleward position during the first dekad of August. Figure 1 shows the current ITF position relative to the positions of climatology for the third dekad of August, and its previous position during the second dekad of August. Figures 2 and 3 are time series illustrating the mean latitudinal values of the western and eastern portions of the ITF, respectively, and their observed progressions since April, 2014.

Current vs. Normal Dekadal ITF Position
and RFE Accumulated Precipitation (mm)
August 2014, Dekad 3



Mean Western Portion of the ITF: Averaged 10W to 10E
As of: August 2014, Dekad 3



Mean Eastern Portion of the ITF: Averaged 20E to 35E
As of: August 2014, Dekad 3

