



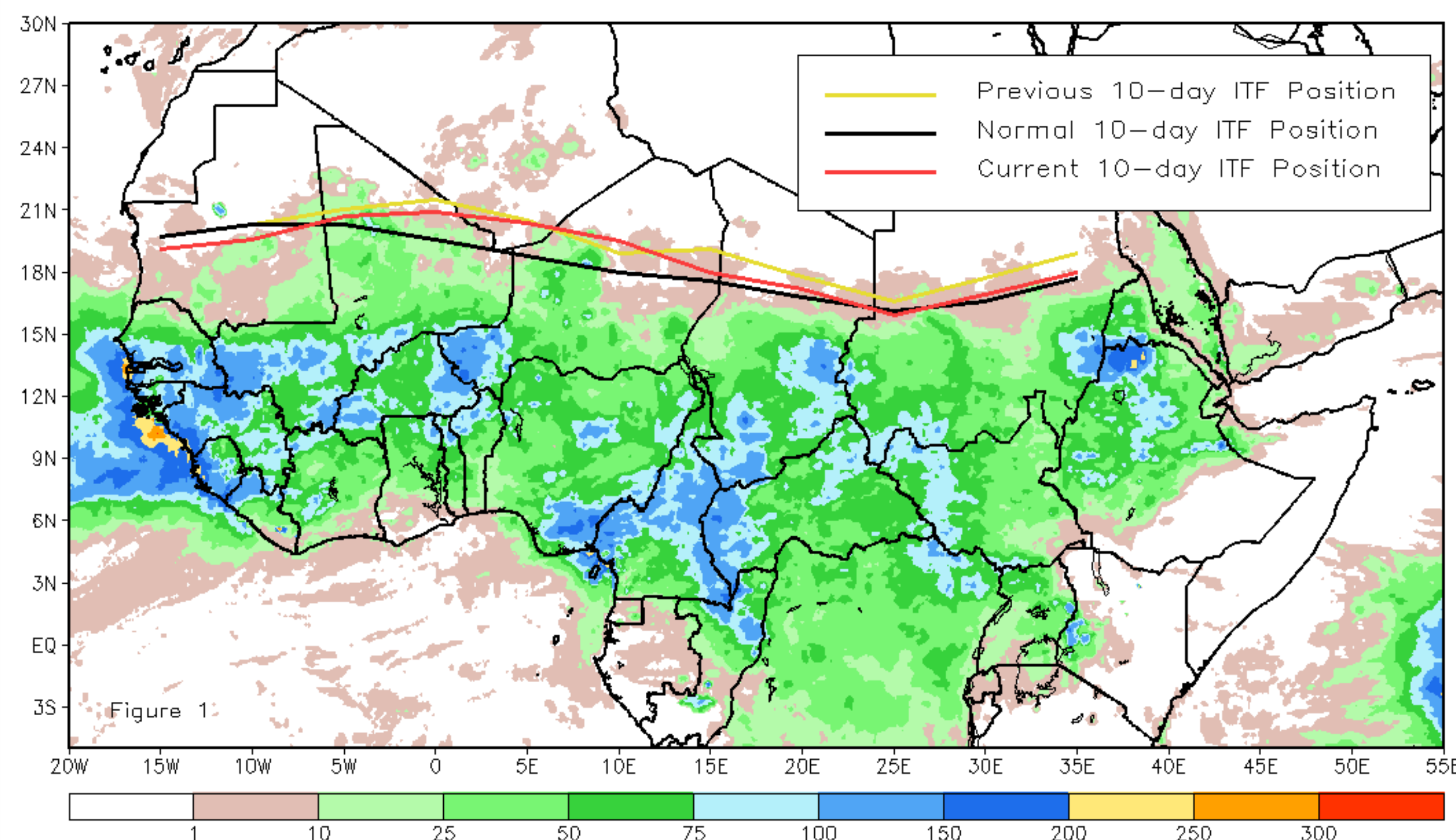
CPC Africa Desk InterTropical (ITF) Front Analysis

August 2013, Dekad 3

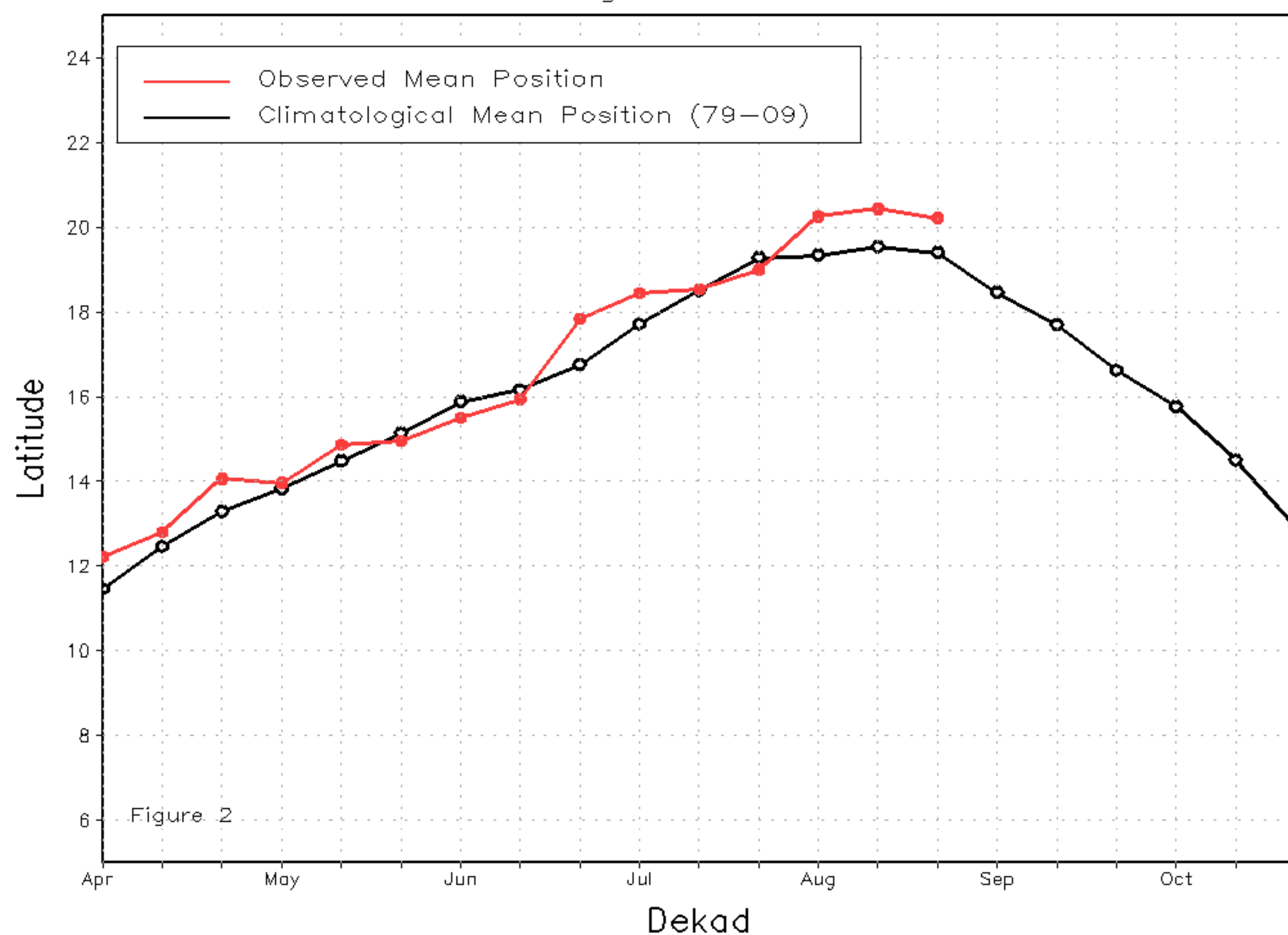
Discussion:

From August 21-31, 2013, the ITF remained displaced poleward across West Africa while it continued to progress equatorward over eastern Africa. The mean western portion of the ITF (10W-10E) was located approximately at 20.2 degrees North, which was 0.8 degrees north of the mean climatological position and 0.2 degrees south of the previous dekads position. For the month of August, the ITF was 0.9 degrees north of the average position. This was associated with anomalous, moist, southerly flow resulting in above-average rainfall across Mali, Burkina Faso and Niger. The mean eastern portion of the ITF (20E-35E) was located approximately at 17.0 degrees North, which was 0.2 degrees north of the mean climatological position. For the second consecutive dekad, the ITF across eastern Africa experienced an equatorward retreat, although not nearly as significant as a retreat as the second dekad of August. Figure 1 shows the current ITF position relative to its long-term average position during the third dekad of August and its previous position during the second dekad of August. Figures 2 and 3 are time series, illustrating the mean latitudinal values of the western and eastern portion of the ITF, respectively, and their evolutions since April, 2013.

Current vs. Normal Dekadal ITF Position
and RFE Accumulated Precipitation (mm)
August 2013, Dekad 3



Mean Western Portion of the ITF: Averaged 10W to 10E
As of: August 2013, Dekad 3



Mean Eastern Portion of the ITF: Averaged 20E to 35E
As of: August 2013, Dekad 3

