



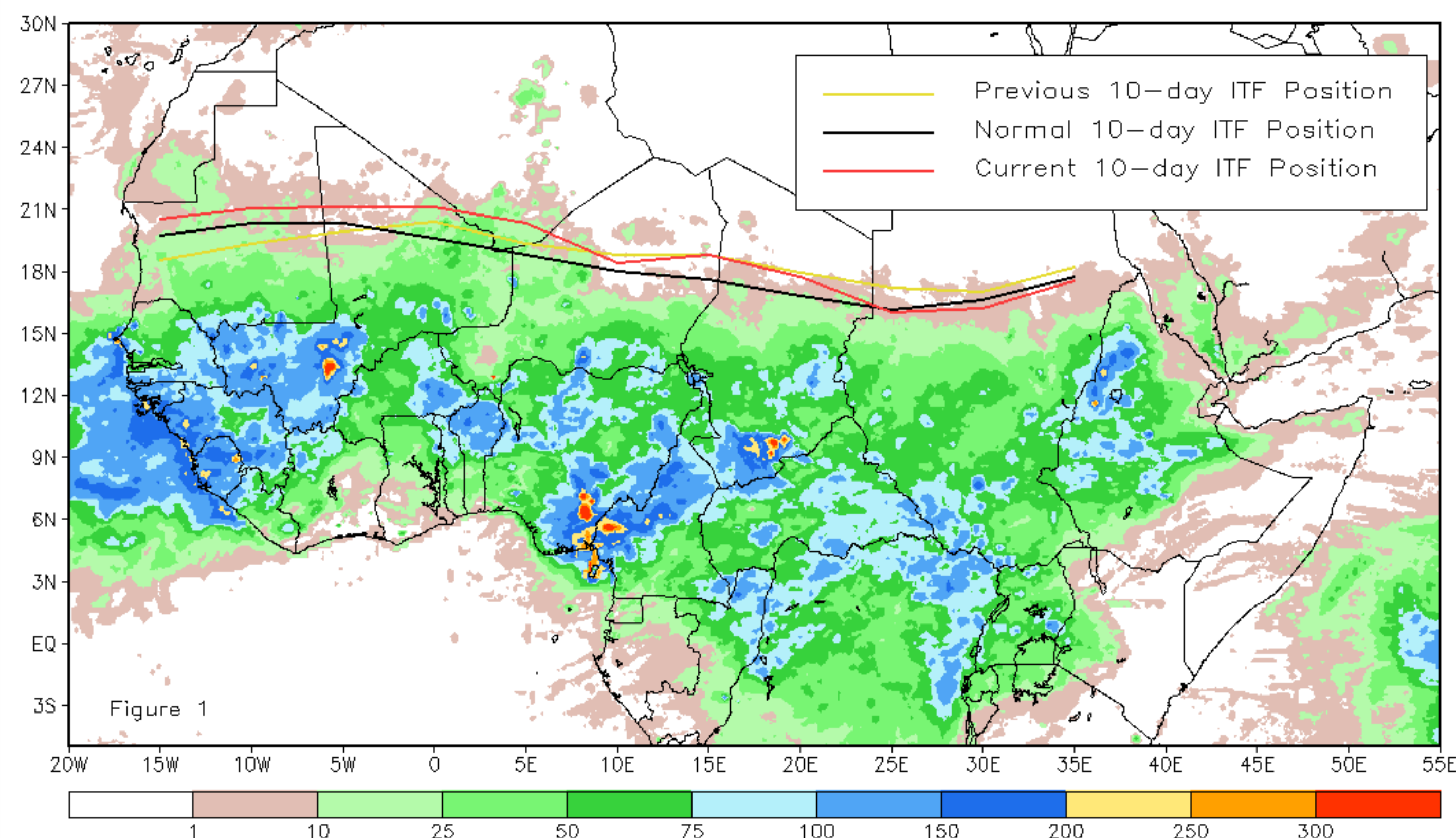
CPC Africa Desk InterTropical (ITF) Front Analysis

August 2012, Dekad 3

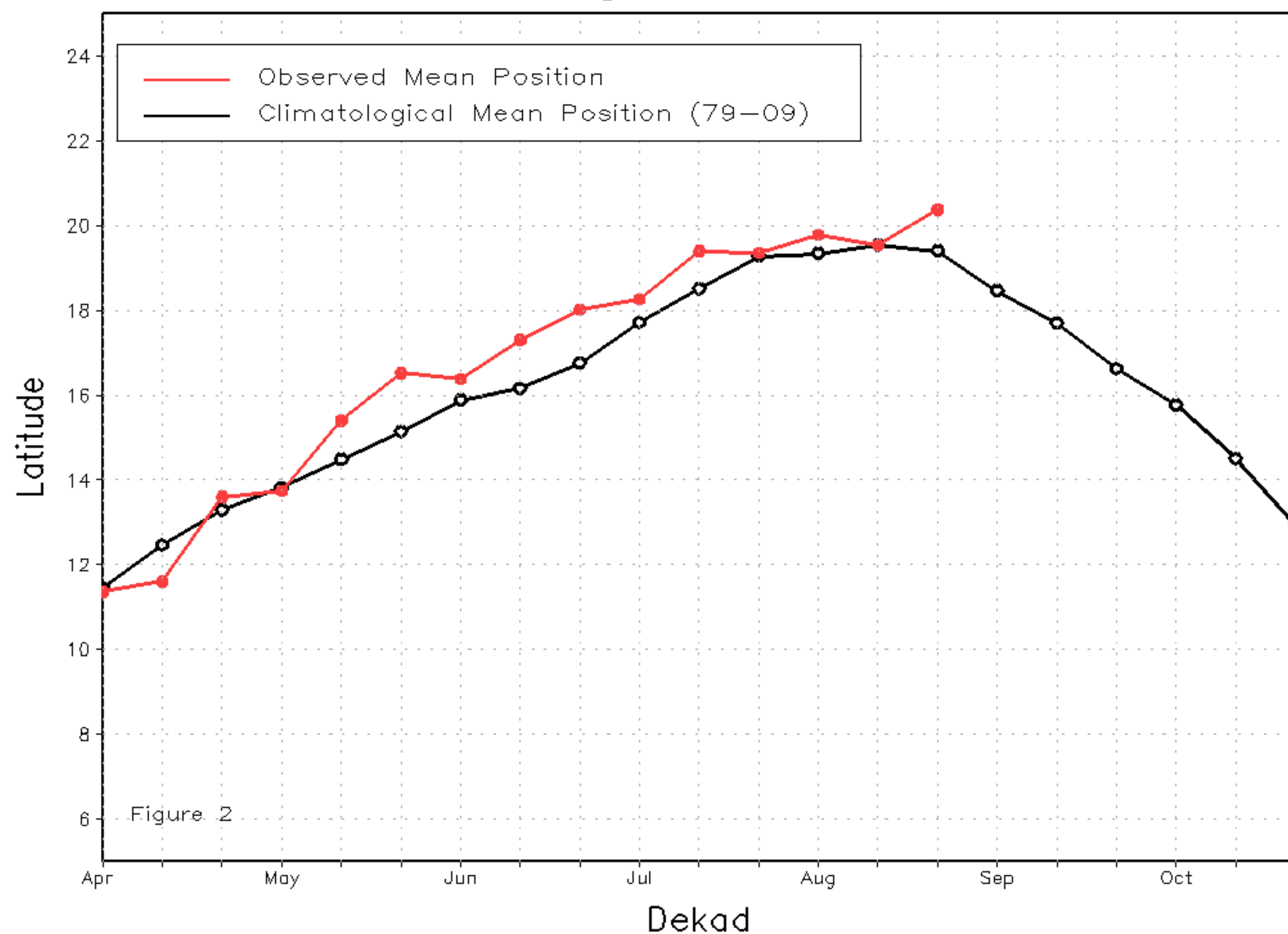
Discussion:

From Aug 21-31, 2012, the ITF over western Africa experienced its northerlymost position of the season and exhibited much poleward advancement compared to its previous dekadal position. The mean western portion of the ITF (10W-10E) was approximately located at 20.4 degrees north, and was located approximately 1 degree above the mean climatological position for late August. The mean western ITF anomalous position was associated with anomalously heavy precipitation throughout much of Mali and southern Mauritania. From 20E-35E, the mean eastern ITF position was approximated at 16.8 degrees north, and remained at very close to its climatological mean position (16.8) for the third dekad of August. In contrast to the west, the ITF experienced much equatorward retreat compared to its previous dekadal position in mid-August, especially over many parts of Sudan. Figure 1 shows the current ITF position relative to its long-term average position during the third dekad of August and its previous position during the second dekad of August. Figures 2 and 3 are time series, illustrating the mean latitudinal values of the western and eastern portion of the ITF, respectively, and their evolutions since April, 2012.

Current vs. Normal Dekadal ITF Position
and RFE Accumulated Precipitation (mm)
August 2012, Dekad 3



Mean Western Portion of the ITF: Averaged 10W to 10E
As of: August 2012, Dekad 3



Mean Eastern Portion of the ITF: Averaged 20E to 35E
As of: August 2012, Dekad 3

