



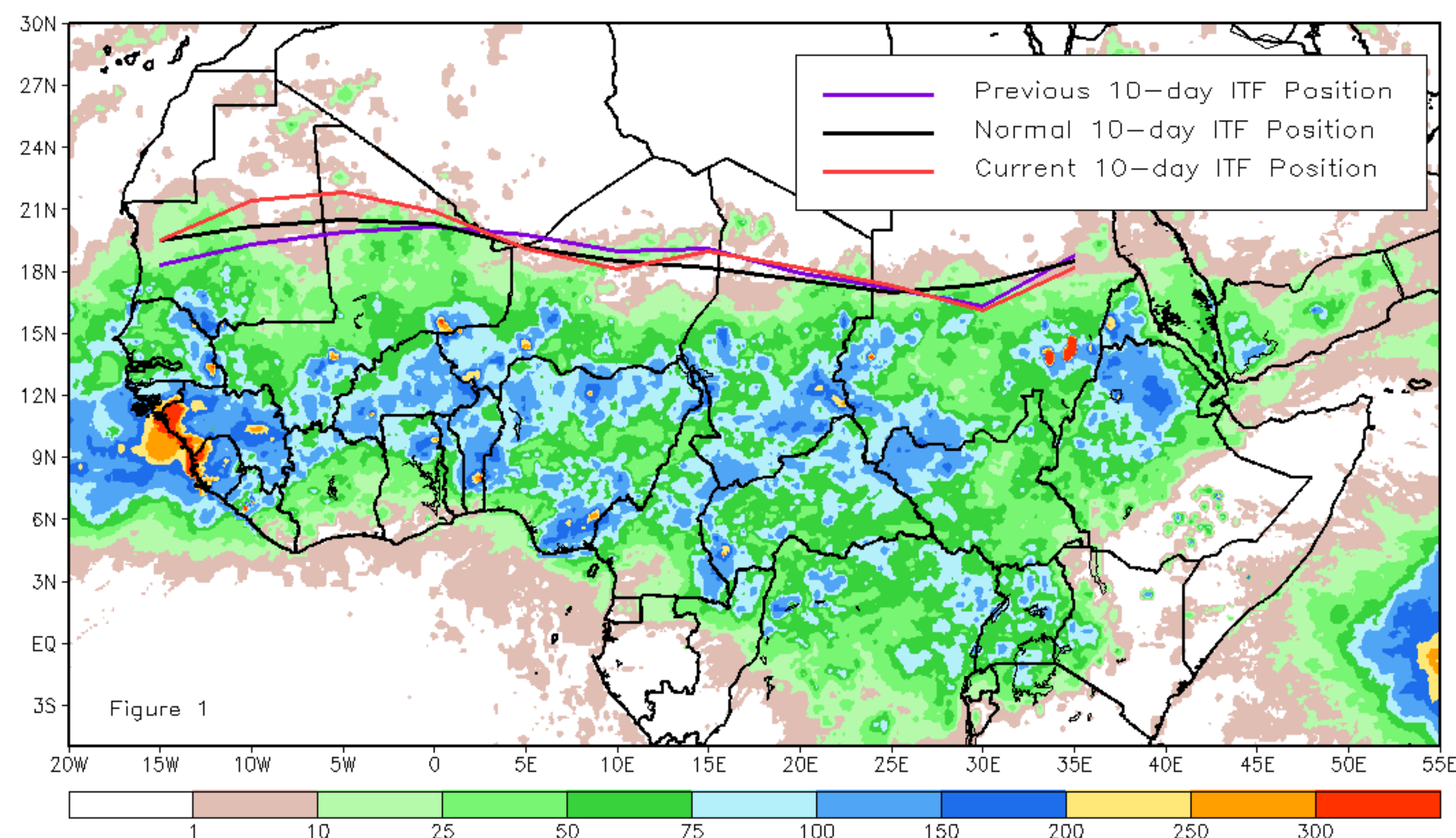
# CPC Africa Desk InterTropical (ITF) Front Analysis

## August 2022, Dekad 2

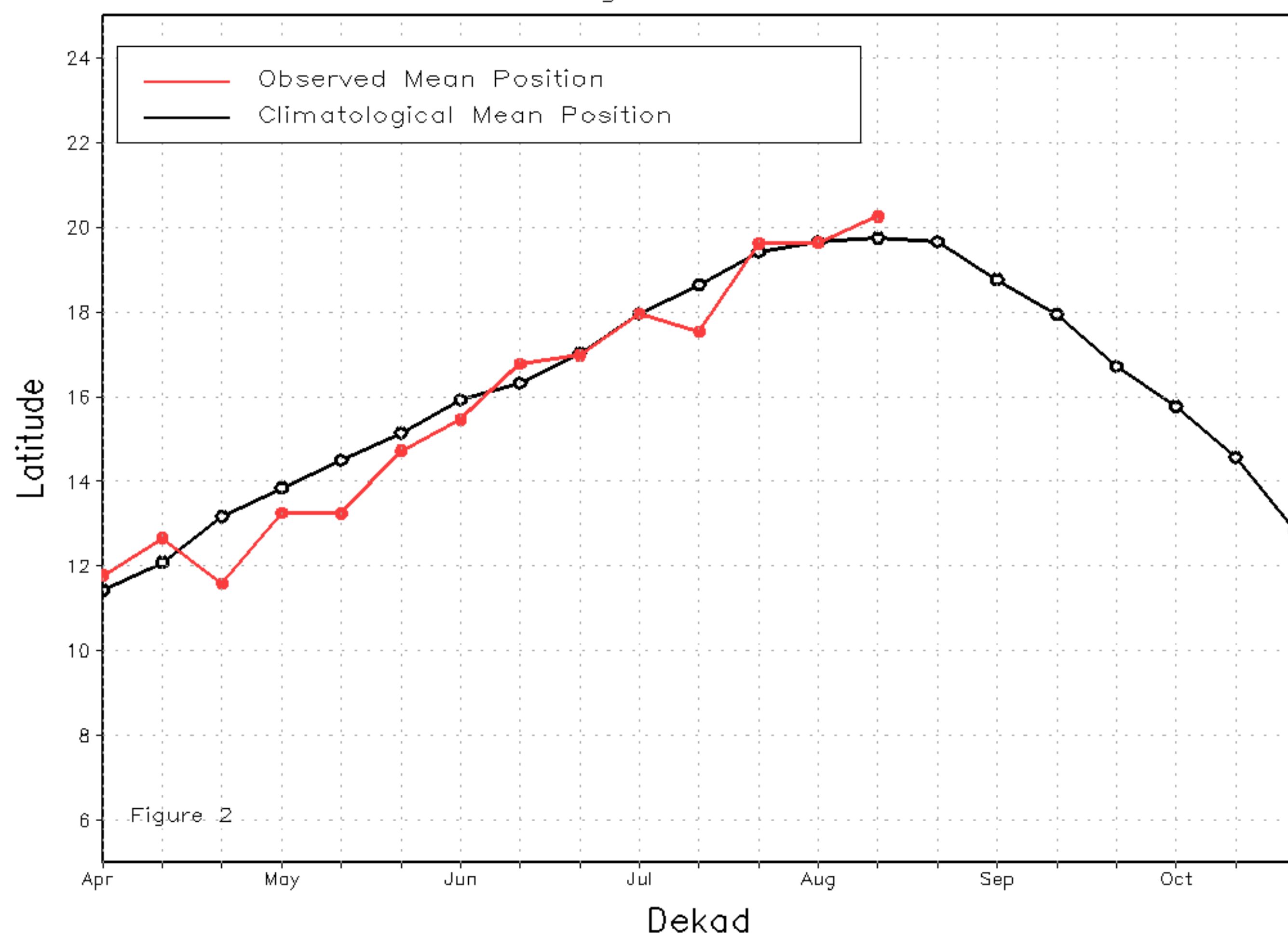
### Discussion:

From 11-20 August, the ITF moved north on the western side but south on the eastern side relative to its previous position. This resulted in an anomalous northerly and southerly position on the western and eastern sides, respectively. The western (10W-10E) portion of the ITF was located approximately at 20.3N, which was above the climatology position by 0.6 degree. The eastern (20E-35E) portion of the ITF was approximated at 17.5N, which was below the climatological position by 0.1 degree. Figure 1 displays the current position of the ITF relative to the long-term average position during the 2nd dekad of August and its previous position during the 1st dekad of August. Figures 2 and 3 are time series, illustrating the latitudinal values of the western and eastern portions of the ITF, respectively, and their seasonal evolutions since the beginning of April 2022.

Current vs. Normal Dekadal ITF Position  
and RFE Accumulated Precipitation (mm)  
August 2022, Dekad 2



Mean Western Portion of the ITF: Averaged 10W to 10E  
As of: August 2022, Dekad 2



Mean Eastern Portion of the ITF: Averaged 20E to 35E  
As of: August 2022, Dekad 2

