



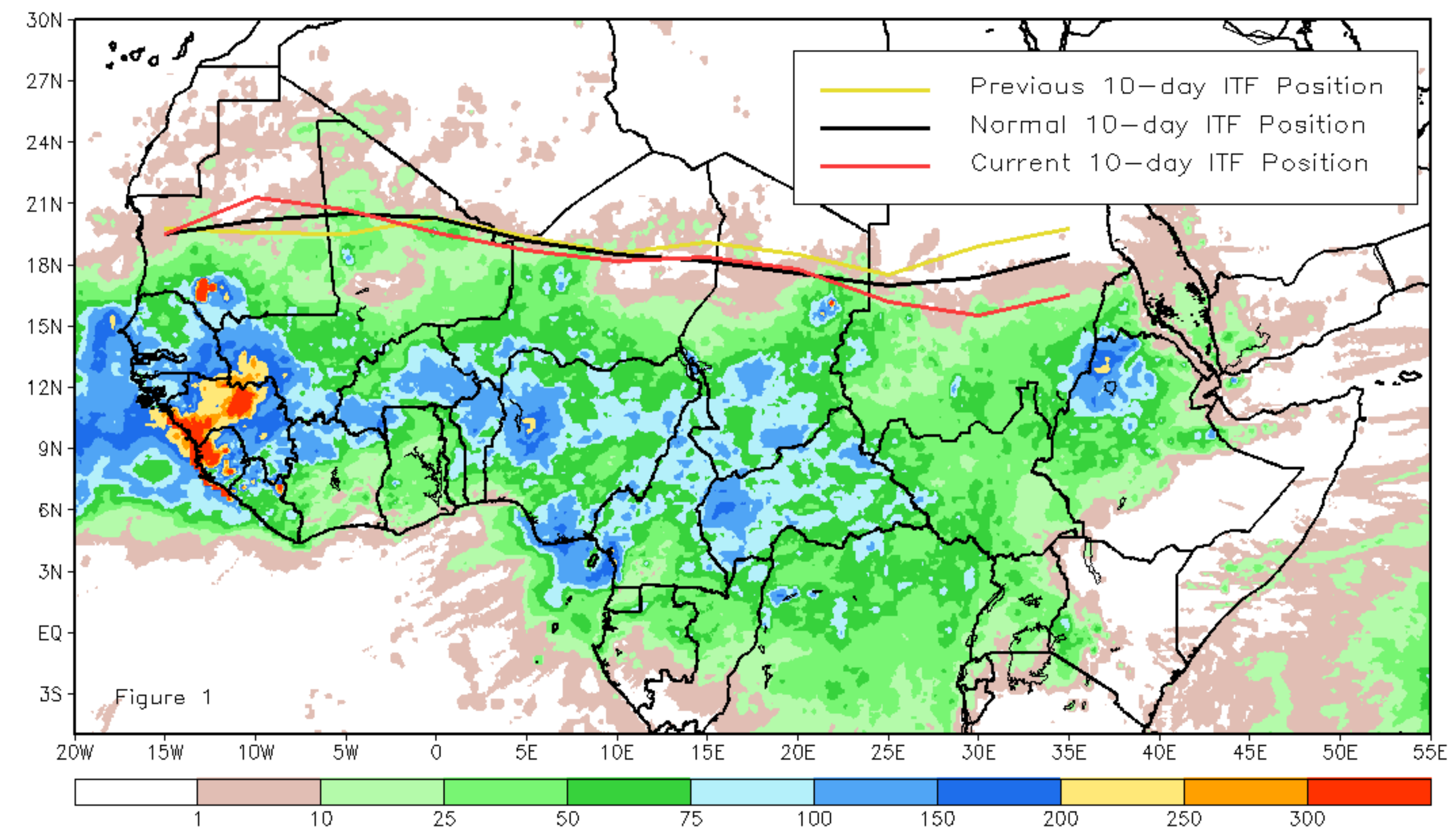
# CPC Africa Desk InterTropical (ITF) Front Analysis

## August 2021, Dekad 2

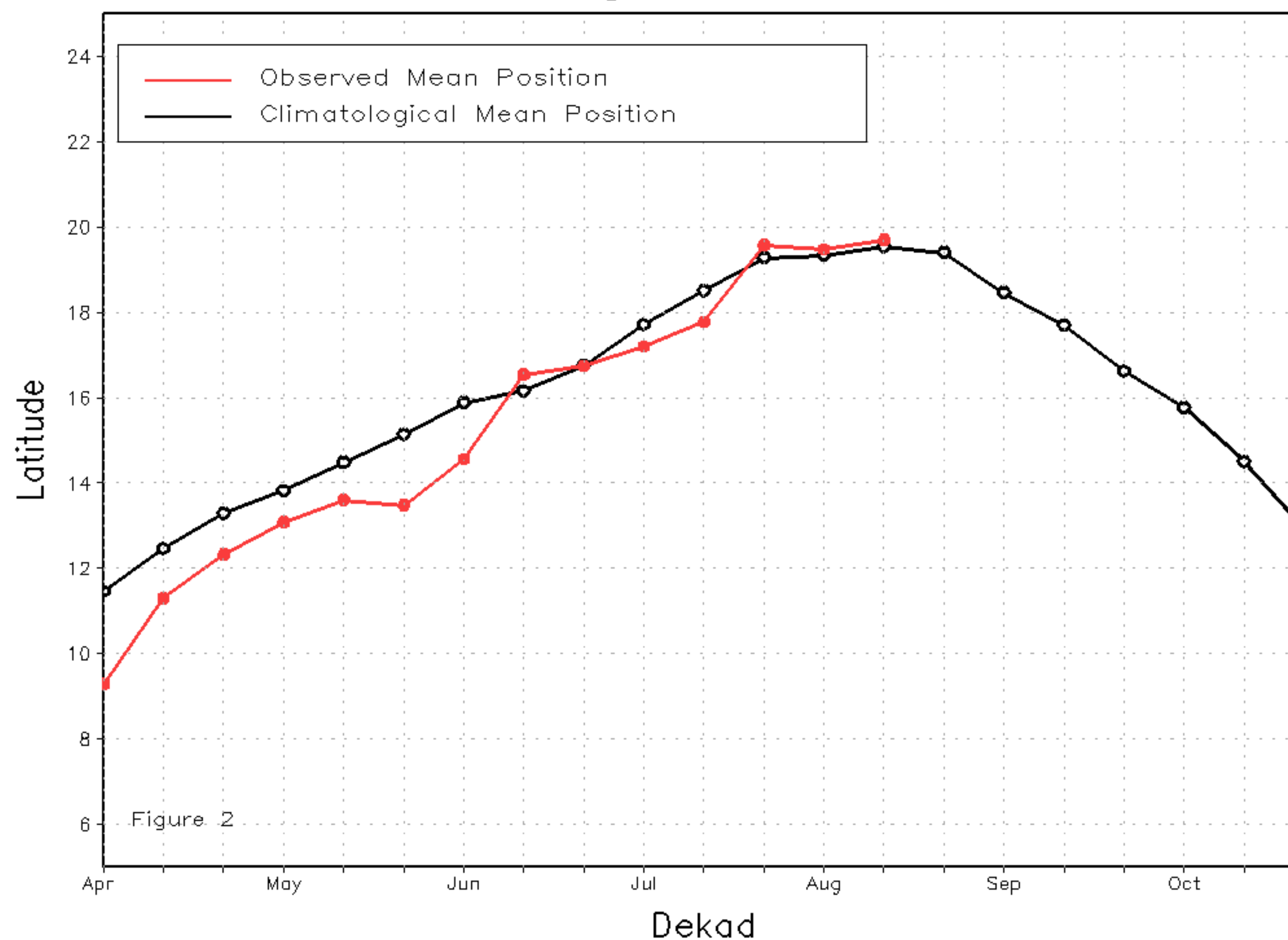
### Discussion:

From 11-20 August, the ITF moved slightly to the north along the western edge; but retreated to the south along its eastern counterpart. From 10W-10E, the mean western portion of the ITF was located at 19.7N and coincided with its long-term average position. This average position of the ITF could explain beneficial rainfall over parts of West Africa. From 20E-35E, the mean eastern portion of the ITF was located at 16.5N, which was to the south of the mean position, centered over 17.6N. This anomalous southerly position of the ITF might have been responsible for the near to below-average rainfall over parts of Sudan and South Sudan. Figure 1 displays the current position of the ITF relative to the long-term average position during the 2nd dekad of August and its previous position during the 1st dekad of August. Figures 2 and 3 are time series, illustrating the latitudinal values of the western and eastern portions of the ITF, respectively, and their seasonal evolutions since the beginning of April, 2021.

Current vs. Normal Dekadal ITF Position  
and RFE Accumulated Precipitation (mm)  
August 2021, Dekad 2



Mean Western Portion of the ITF: Averaged 10W to 10E  
As of: August 2021, Dekad 2



Mean Eastern Portion of the ITF: Averaged 20E to 35E  
As of: August 2021, Dekad 2

