



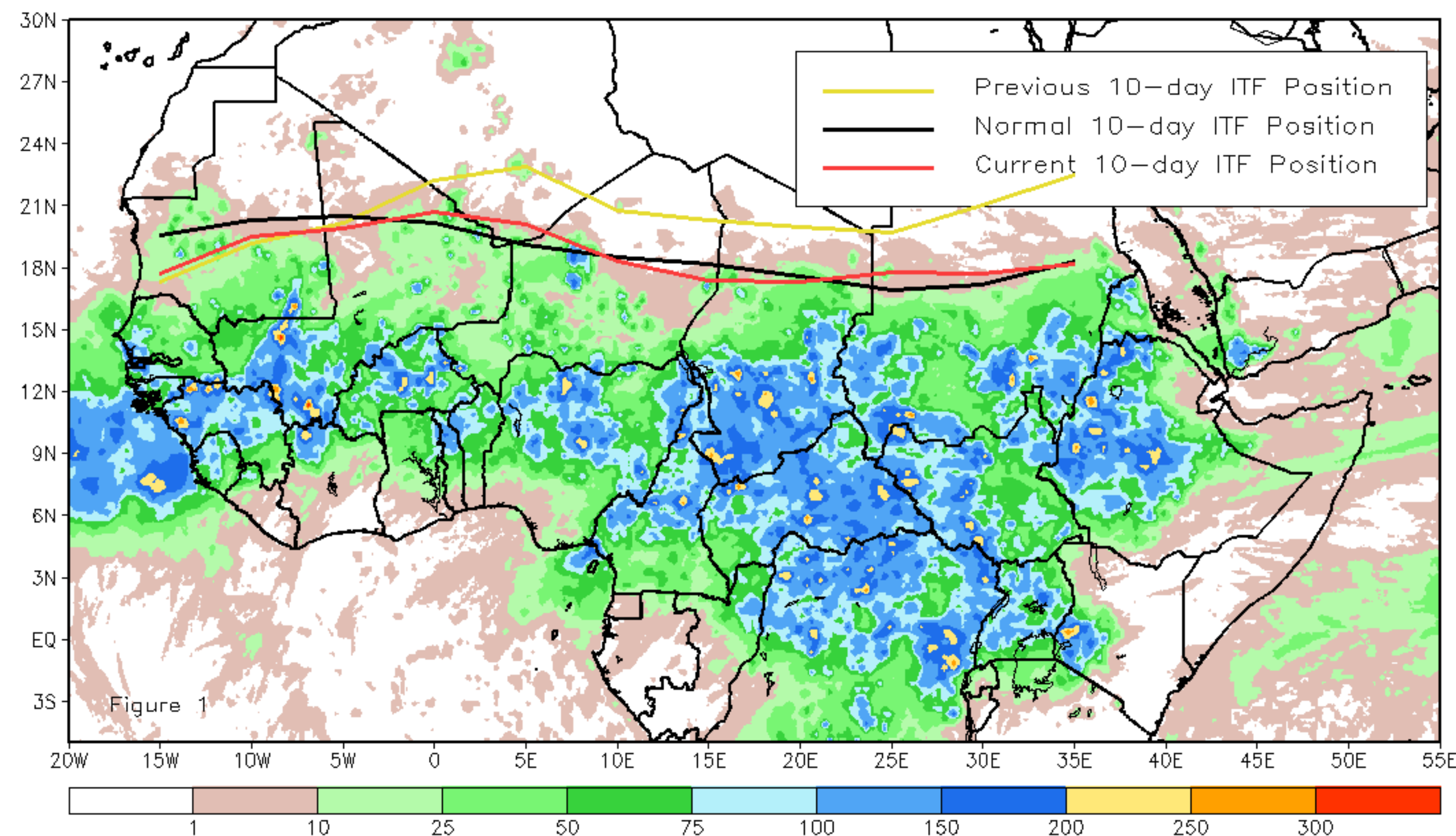
CPC Africa Desk InterTropical (ITF) Front Analysis

August 2020, Dekad 2

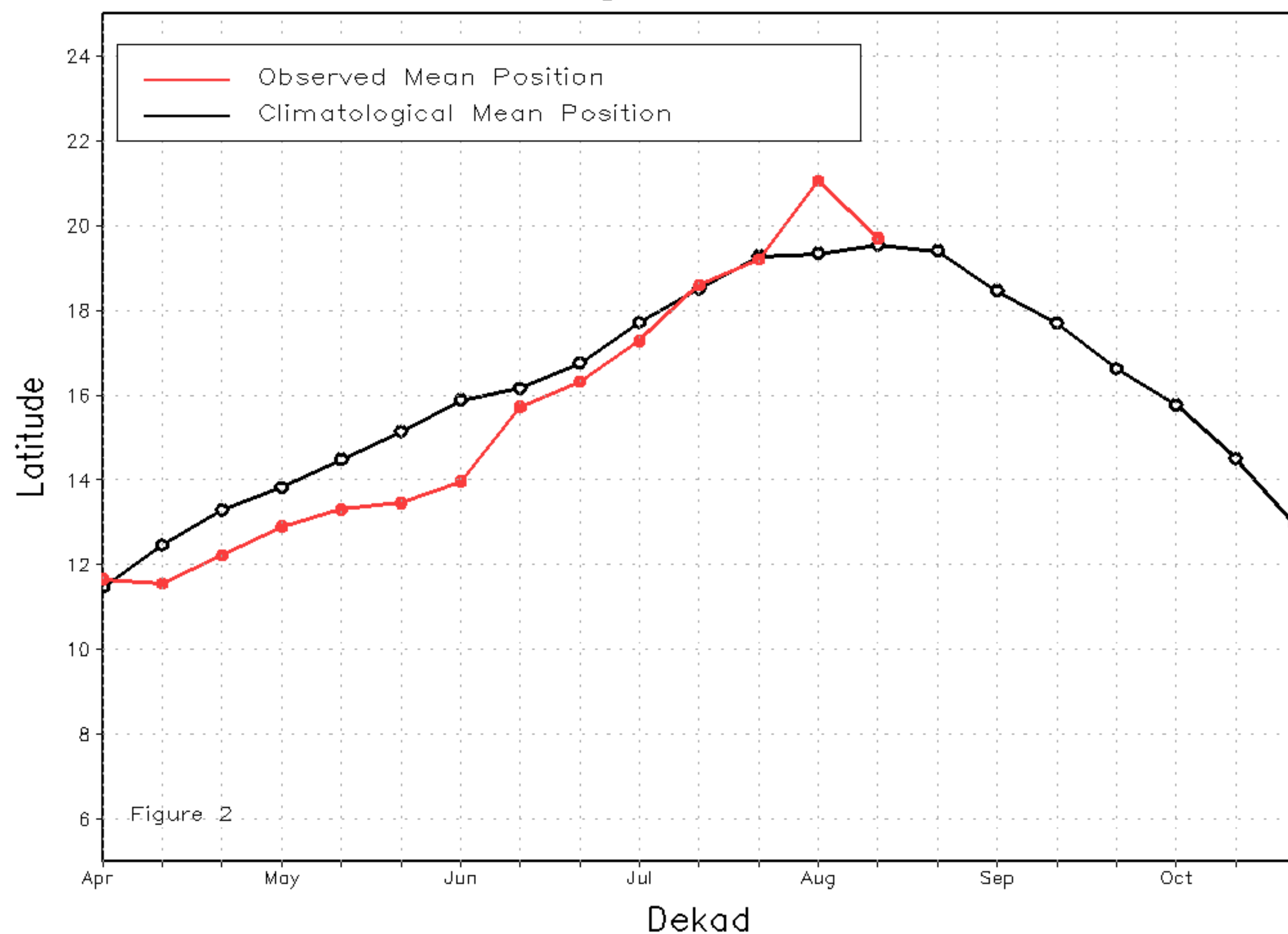
Discussion:

From August 11-20, the ITF began its equatorward retreat and laid very close to the climatological average position. The mean western (10W-10E) portion of the ITF was approximated at 19.7N, which was right at mean position. This average position resulted in continued light rains over many areas of Mauritania and Mali. The mean eastern (20E-35E) portion of the ITF was located at 17.8N, which was still to the north of the mean position by 0.3 degree. This abnormal northerly position for the ITF led to consistent rains over central and eastern Sudan. Figure 1 shows the current position of the ITF relative to the climatological position during the 2nd dekad of August and its previous position during the 1st dekad of the month. Figures 2 and 3 are time series, illustrating the latitudinal values of the western and eastern portions of the ITF, respectively, and their seasonal evolutions since April, 2020.

Current vs. Normal Dekadal ITF Position
and RFE Accumulated Precipitation (mm)
August 2020, Dekad 2



Mean Western Portion of the ITF: Averaged 10W to 10E
As of: August 2020, Dekad 2



Mean Eastern Portion of the ITF: Averaged 20E to 35E
As of: August 2020, Dekad 2

