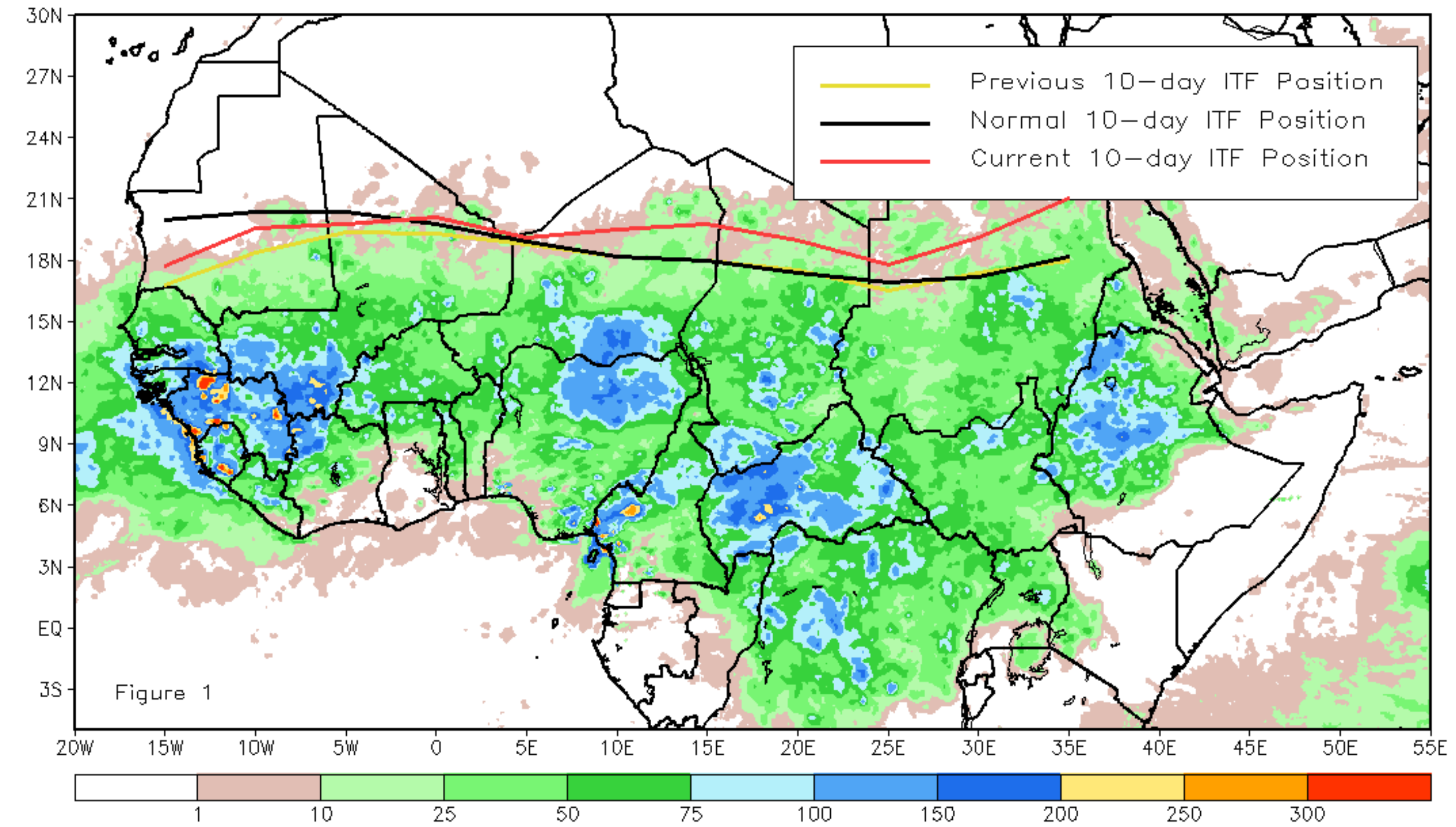


# CPC Africa Desk InterTropical (ITF) Front Analysis August 2019, Dekad 2

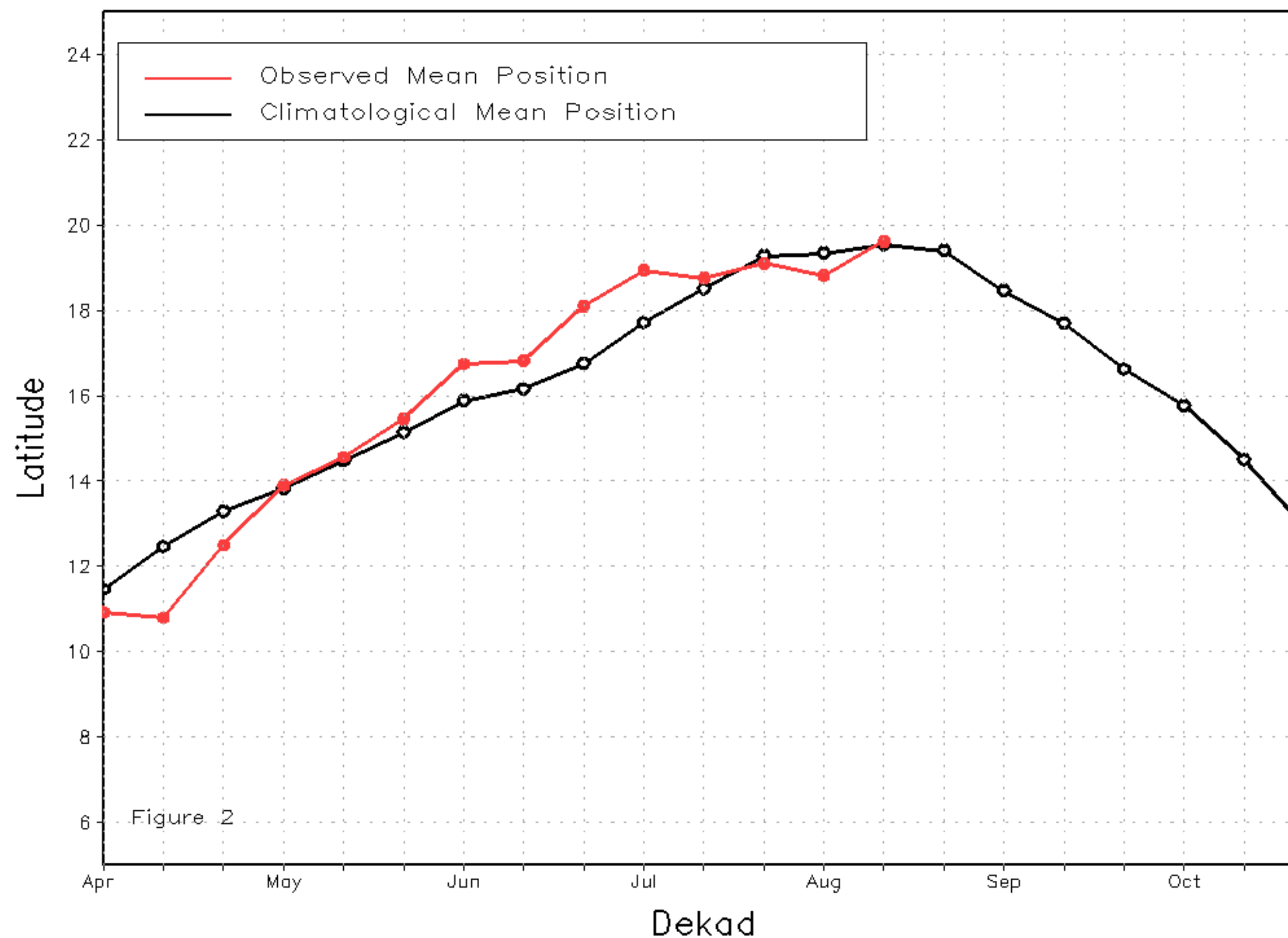
## Discussion:

From August 11-20, the ITF moved farther north compared to the previous decade. The mean position of the ITF is approximated at 19.3N, which represents a northward movement compared to the previous decade. Between 15W-5E, the ITF is still declined in the far west compared to the normal position which could explain the suppression of rain experienced over Senegal and south Mauritania. Between 5E-35E, the ITF has moved significantly northward especially at 15E and between 35-35E. As a result, near or above average rainfall was widespread across Chad and Sudan during the dekad; which could explained the floods and landslides reported over the central west to east part of Sudan. Figure 1 shows the current position of the ITF relative to the long-term average position during the 2nd dekad of August and its previous position during the 1st dekad of August. Figures 2 and 3 are time series, illustrating the latitudinal values of the western and eastern portions of the ITF, respectively, and their seasonal evolutions since April, 2019.

Current vs. Normal Dekadal ITF Position  
and RFE Accumulated Precipitation (mm)  
August 2019, Dekad 2



Mean Western Portion of the ITF: Averaged 10W to 10E  
As of: August 2019, Dekad 2



Mean Eastern Portion of the ITF: Averaged 20E to 35E  
As of: August 2019, Dekad 2

