



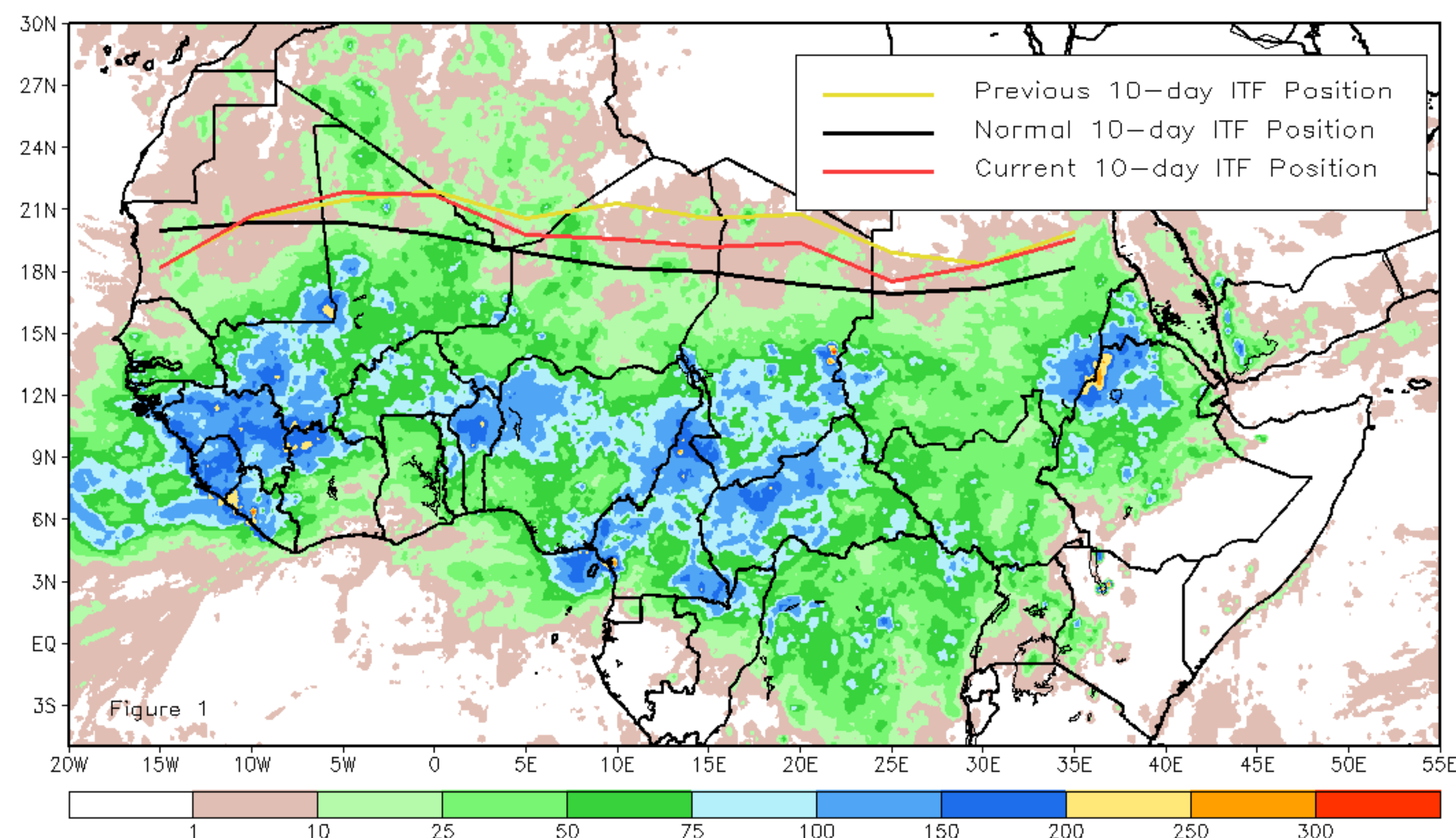
CPC Africa Desk InterTropical (ITF) Front Analysis

August 2018, Dekad 2

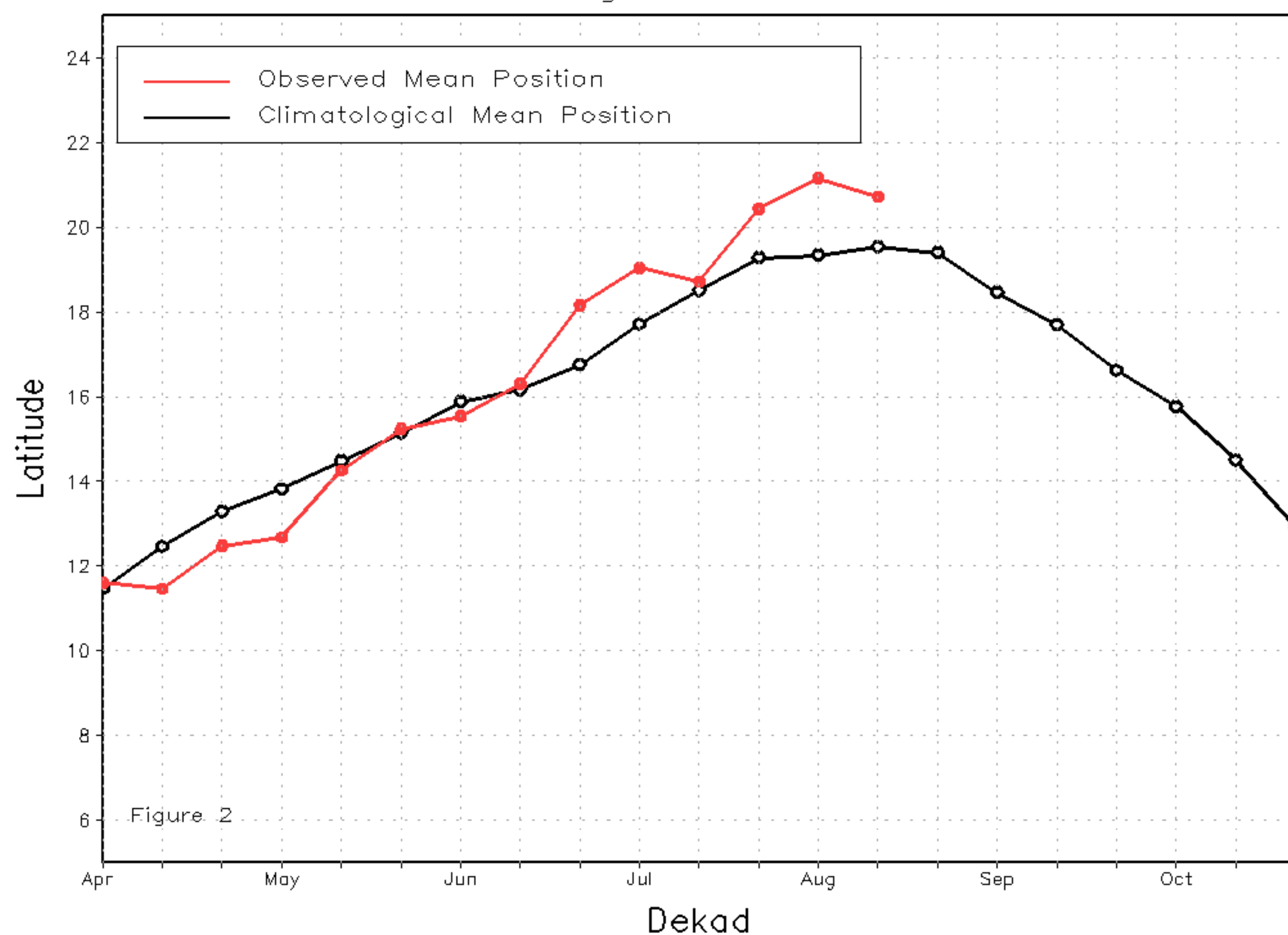
Discussion:

From August 11-20, the ITF experienced a slight, southward retreat, particularly along the central and eastern portion, relative to its position during the previous period. However, the ITF, overall, remained above (to the north of) the climatological position. The mean western (10W - 10E) portion of the ITF was located at 20.7N, which was farther north of the mean and last year continued northerly position contributed to wetness across the Sahel, especially Mali. The mean eastern (20E - 35E) portion of the ITF was approximated at 18.7N, which also was to the north of the average and last year position resulted in wet conditions in eastern Sudan. Figure 1 shows the current position of the ITF compared to the climatological (black) position during the 2nd dekad of August and its previous (yellow) position during the 1st dekad of August. Figures 2 and 3 are time series, illustrating the mean latitudinal values of the western and eastern portion of the ITF, respectively, and their seasonal evolutions since April, 2018.

Current vs. Normal Dekadal ITF Position
and RFE Accumulated Precipitation (mm)
August 2018, Dekad 2



Mean Western Portion of the ITF: Averaged 10W to 10E
As of: August 2018, Dekad 2



Mean Eastern Portion of the ITF: Averaged 20E to 35E
As of: August 2018, Dekad 2

