



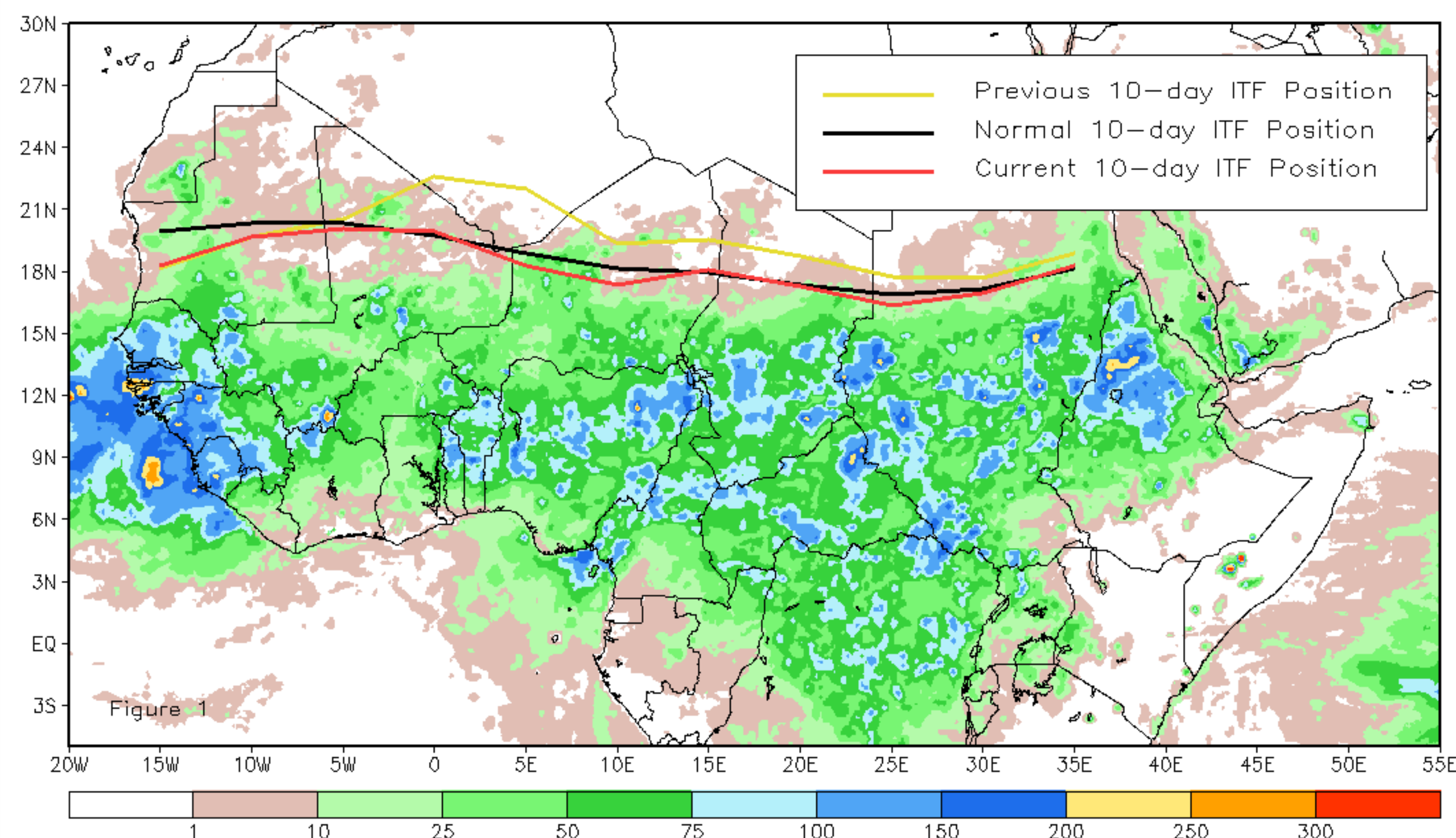
CPC Africa Desk InterTropical (ITF) Front Analysis

August 2017, Dekad 2

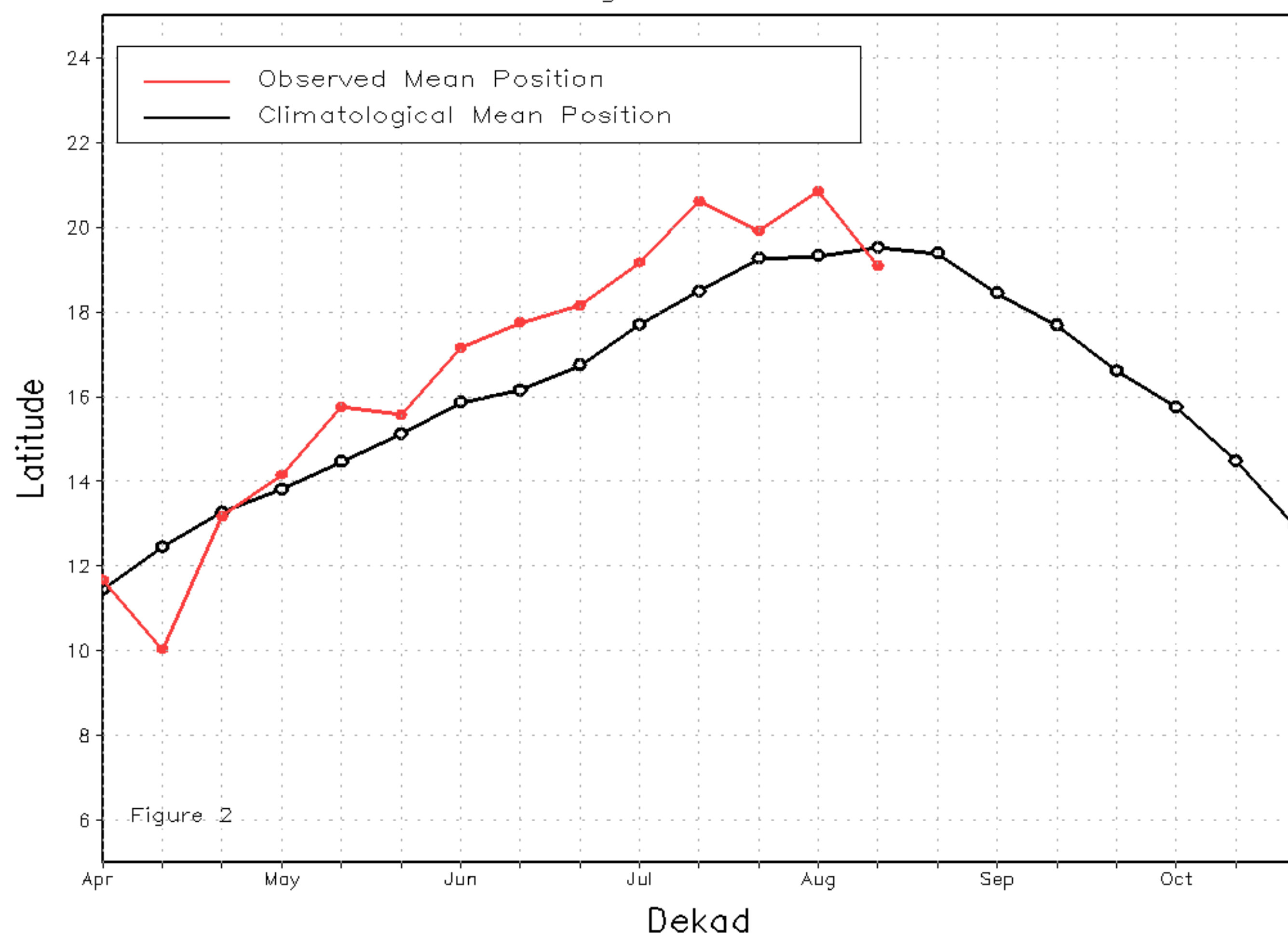
Discussion:

From August 11-20, the ITF began its southward retreat relative to its position during the previous period and also was slightly to the south of the long-term average position during this time of the year. The mean western (10W-10E) portion of the ITF was located near 19.1 degrees N, which was anomalously south of the climatological position by 0.4 degree. The mean eastern (20E-35E) portion of the ITF was approximated at 17.2 degrees N, which also was to the south of the average position by 0.2 degree. Figure 1 shows the current position of the ITF relative to its climatological position during the 2nd dekad of August and its previous position during the 1st dekad of August. Figures 2 and 3 are time series, illustrating the mean latitudinal values of the western and eastern portion of the ITF, respectively, and their evolutions since April, 2017.

Current vs. Normal Dekadal ITF Position
and RFE Accumulated Precipitation (mm)
August 2017, Dekad 2



Mean Western Portion of the ITF: Averaged 10W to 10E
As of: August 2017, Dekad 2



Mean Eastern Portion of the ITF: Averaged 20E to 35E
As of: August 2017, Dekad 2

