

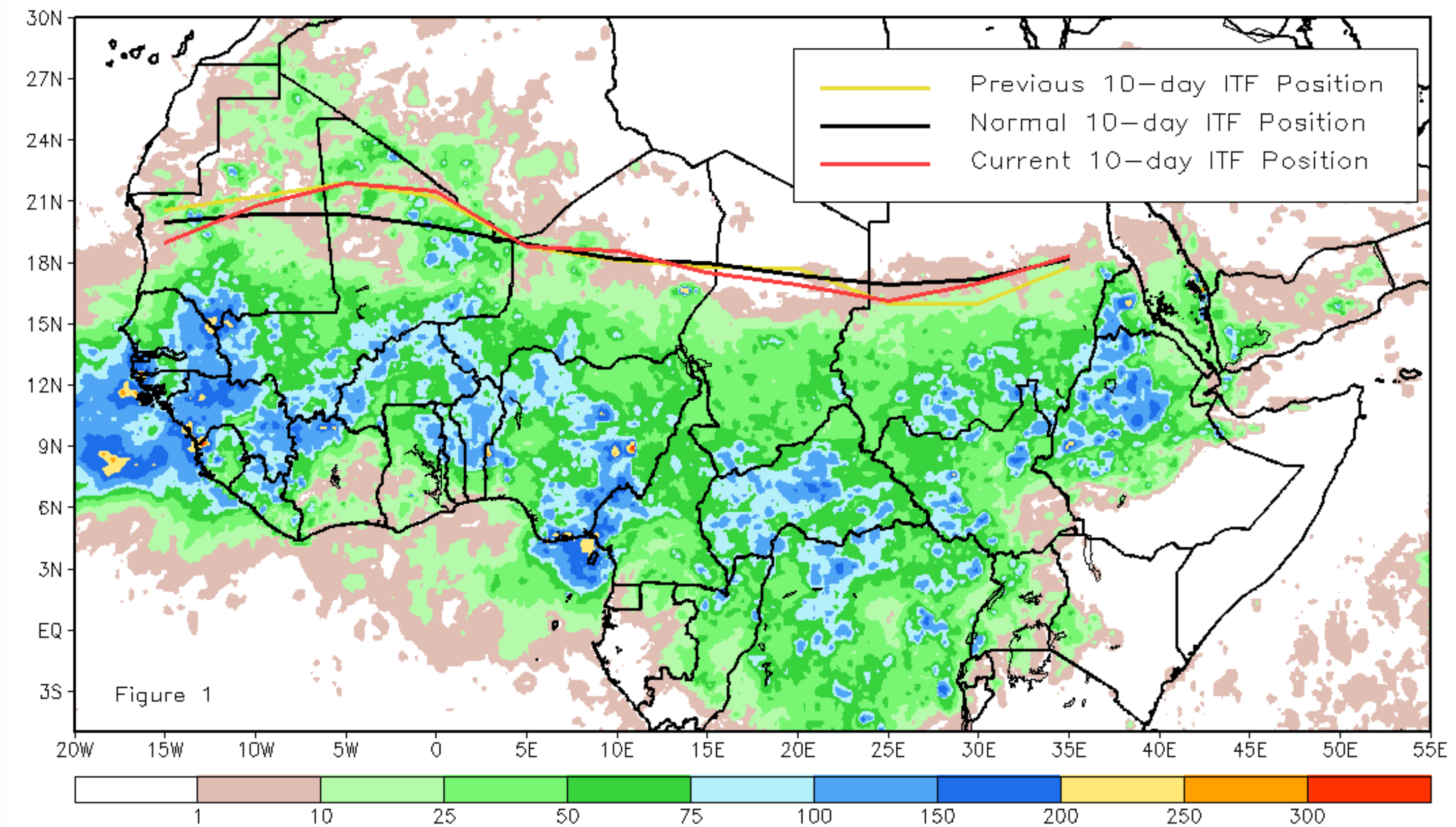


CPC Africa Desk InterTropical (ITF) Front Analysis August 2016, Dekad 2

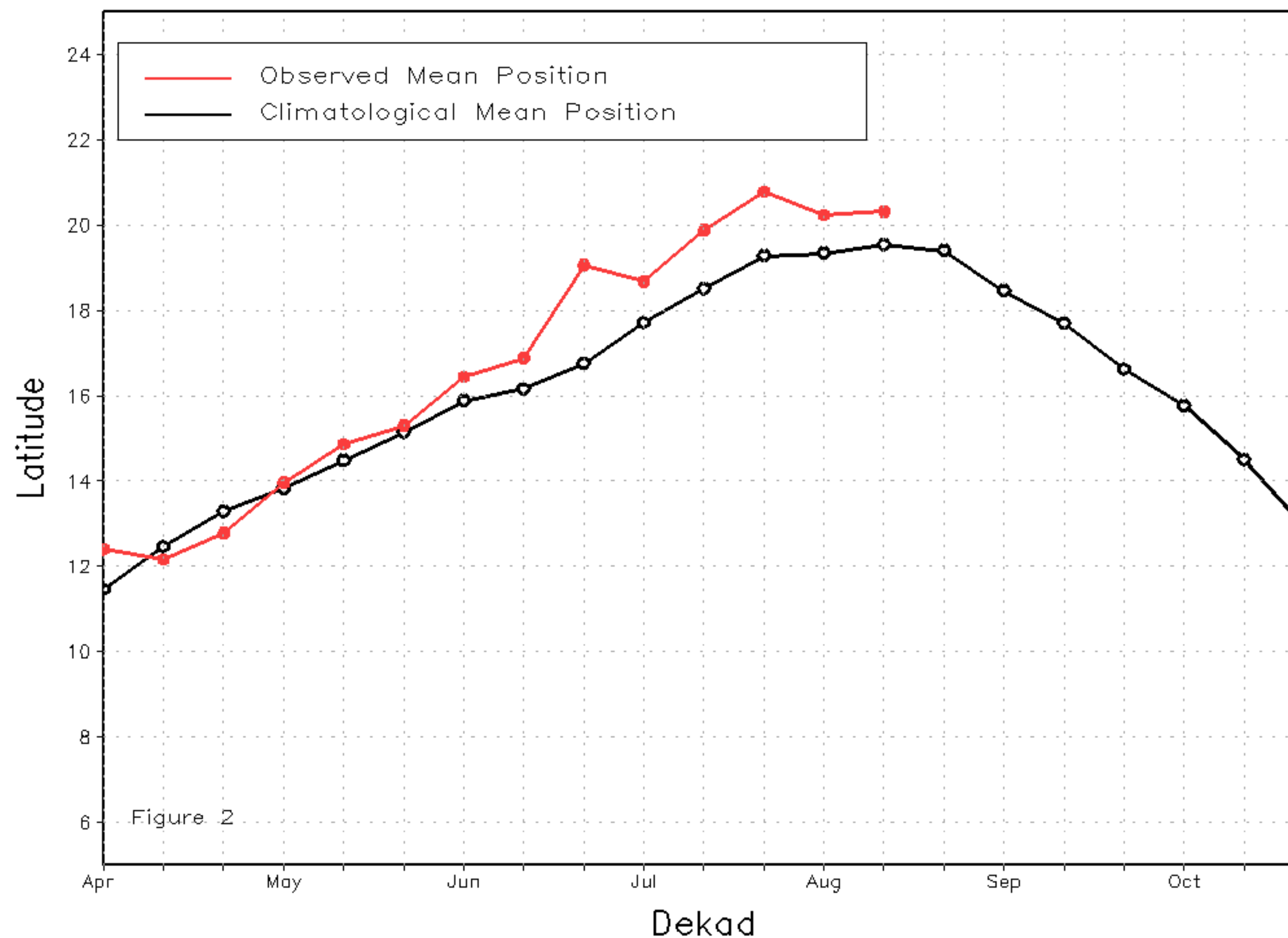
Discussion:

From August 11-20, the ITF did not change much position relative to that of the previous, first ten-day period of August. The ITF remained above the climatological position across its western (10W-10E) portion. The mean western portion was located approximately at 20.3 degrees N, which was to the north of the mean position by 0.8 degree. In contrast, the ITF was slightly below the mean position across its eastern portion. The mean eastern (20E-35E) portion of the ITF was located at 17.1 degrees N, while the mean position was averaged at 17.4 degrees N. Figure 1 shows the current position of the ITF relative to its climatological position during the 2nd dekad of August, and its previous location during the 1st dekad of the month. Figures 2 and 3 are time series, illustrating the mean latitudinal values of the western and eastern portions of the ITF, respectively, and their evolutions since April, 2016.

Current vs. Normal Dekadal ITF Position
and RFE Accumulated Precipitation (mm)
August 2016, Dekad 2



Mean Western Portion of the ITF: Averaged 10W to 10E
As of: August 2016, Dekad 2



Mean Eastern Portion of the ITF: Averaged 20E to 35E
As of: August 2016, Dekad 2

