



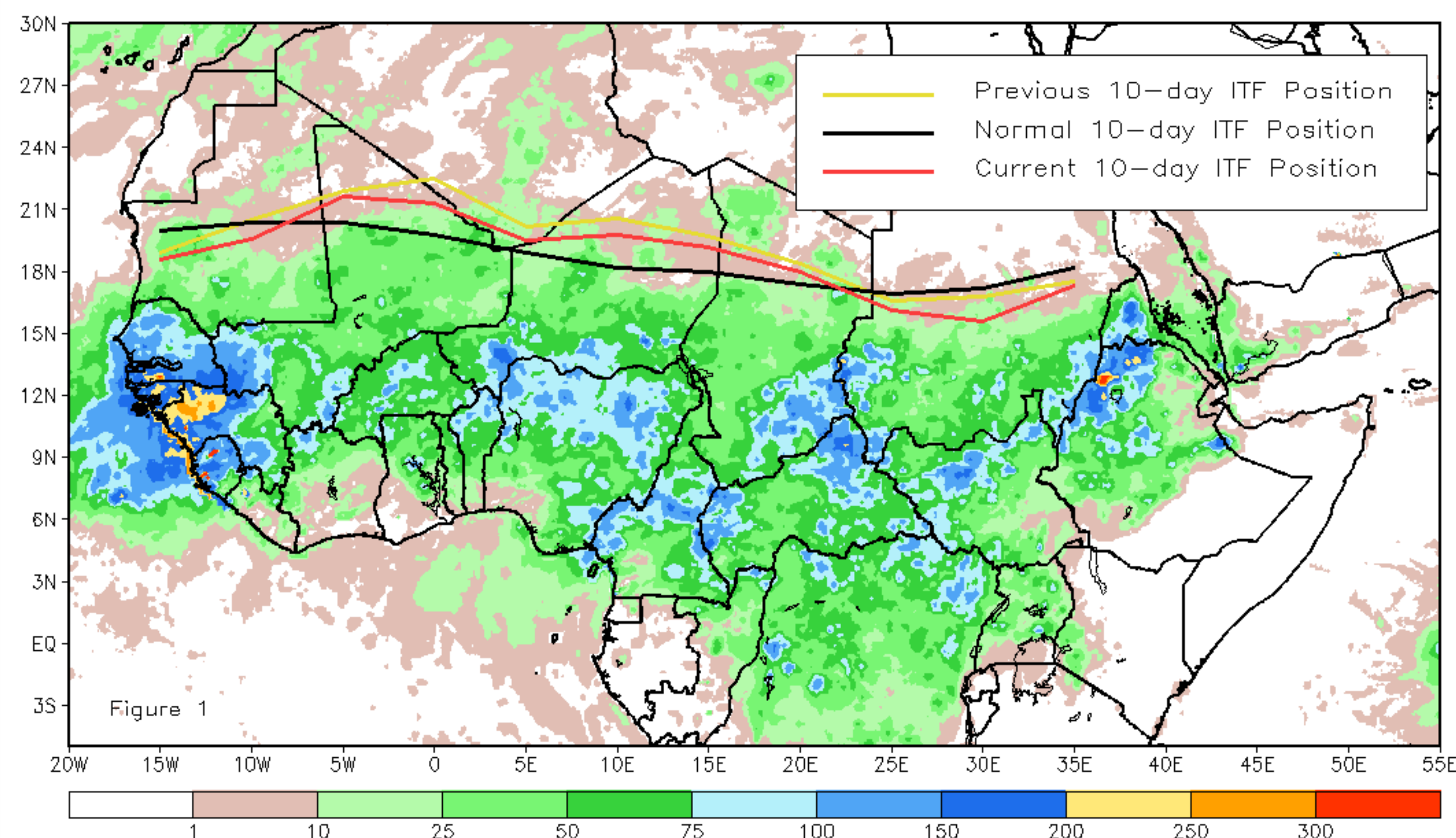
CPC Africa Desk InterTropical (ITF) Front Analysis

August 2015, Dekad 2

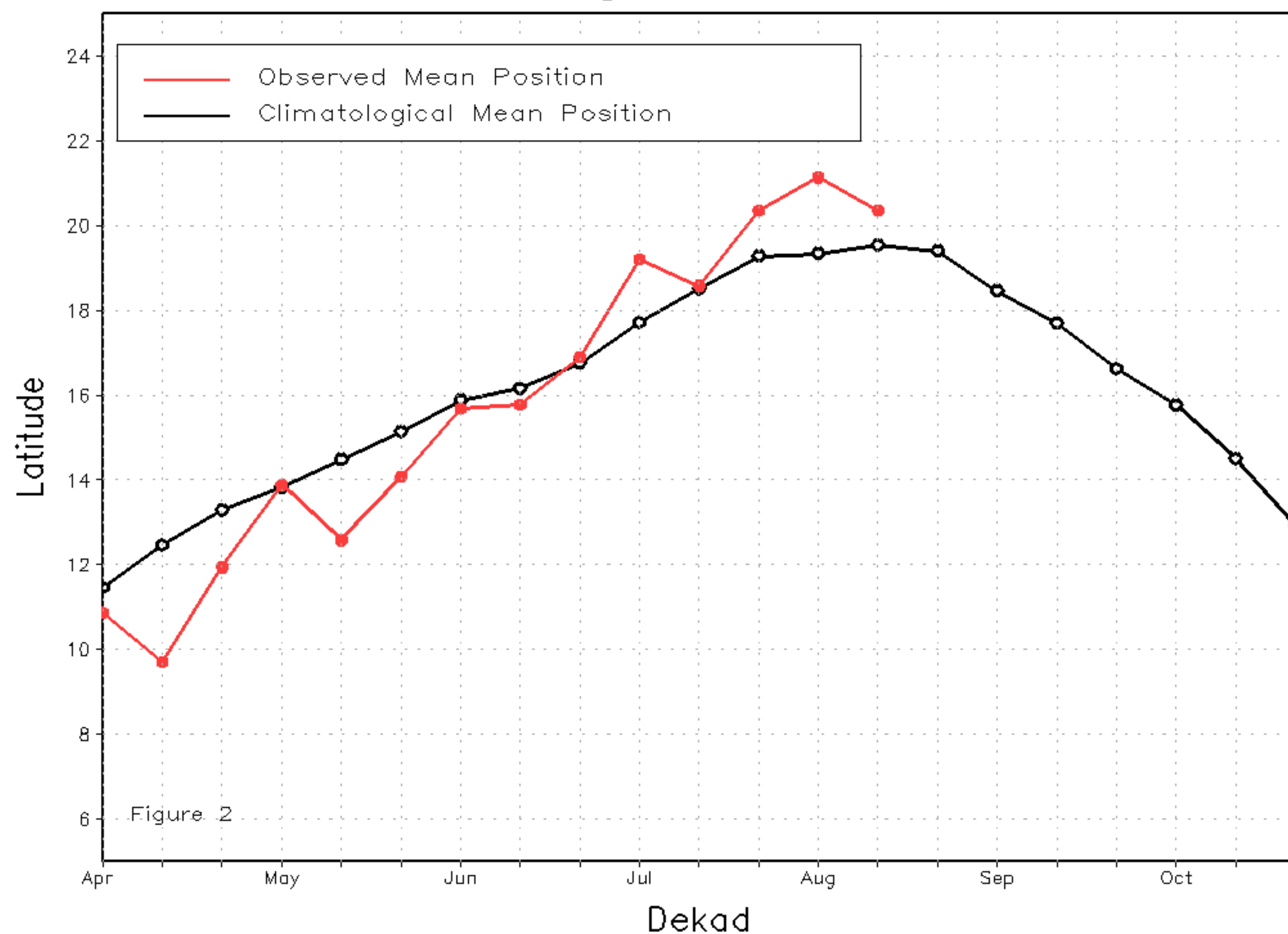
Discussion:

During the second dekad of August, the general position of the ITF slightly withdrew from its previous position in early August, but remained above-average in latitude compared to climatology. The mean western portion of the ITF (10W-10E) was approximated at 20.4 degrees N, nearly 1 degree above the normal climatological position (19.5) for mid-August. The anomalously high position in the west was associated with strong southerly flow, advecting moisture and triggering well-distributed rainfall across much of the northern Sahelian regions of Mauritania, Mali and Niger. The mean eastern portion of the ITF (20E-35E) was approximated at 16.8 degrees North, remaining below the normal climatological position (17.4) for mid-August. Much of the ITF suppression was located over much of Sudan. Figure 1 illustrates the current position of the ITF relative to its climatological position during the second dekad of August, and its previous position during the first dekad of August. Figures 2 and 3 are time series, illustrating the mean latitudinal values of the western and eastern portions of the ITF, respectively, and their evolution since April, 2015.

Current vs. Normal Dekadal ITF Position
and RFE Accumulated Precipitation (mm)
August 2015, Dekad 2



Mean Western Portion of the ITF: Averaged 10W to 10E
As of: August 2015, Dekad 2



Mean Eastern Portion of the ITF: Averaged 20E to 35E
As of: August 2015, Dekad 2

