



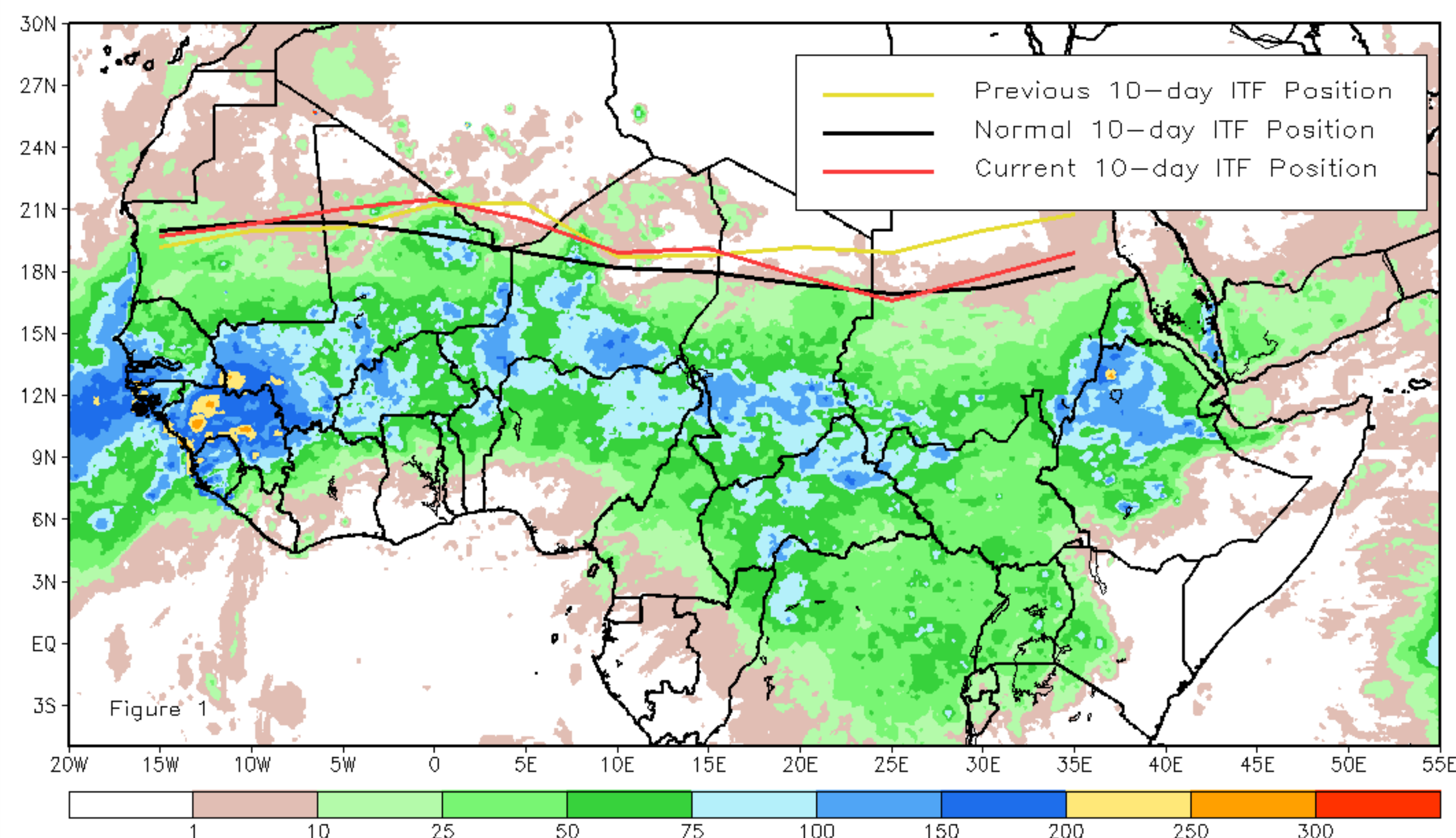
# CPC Africa Desk InterTropical (ITF) Front Analysis

## August 2013, Dekad 2

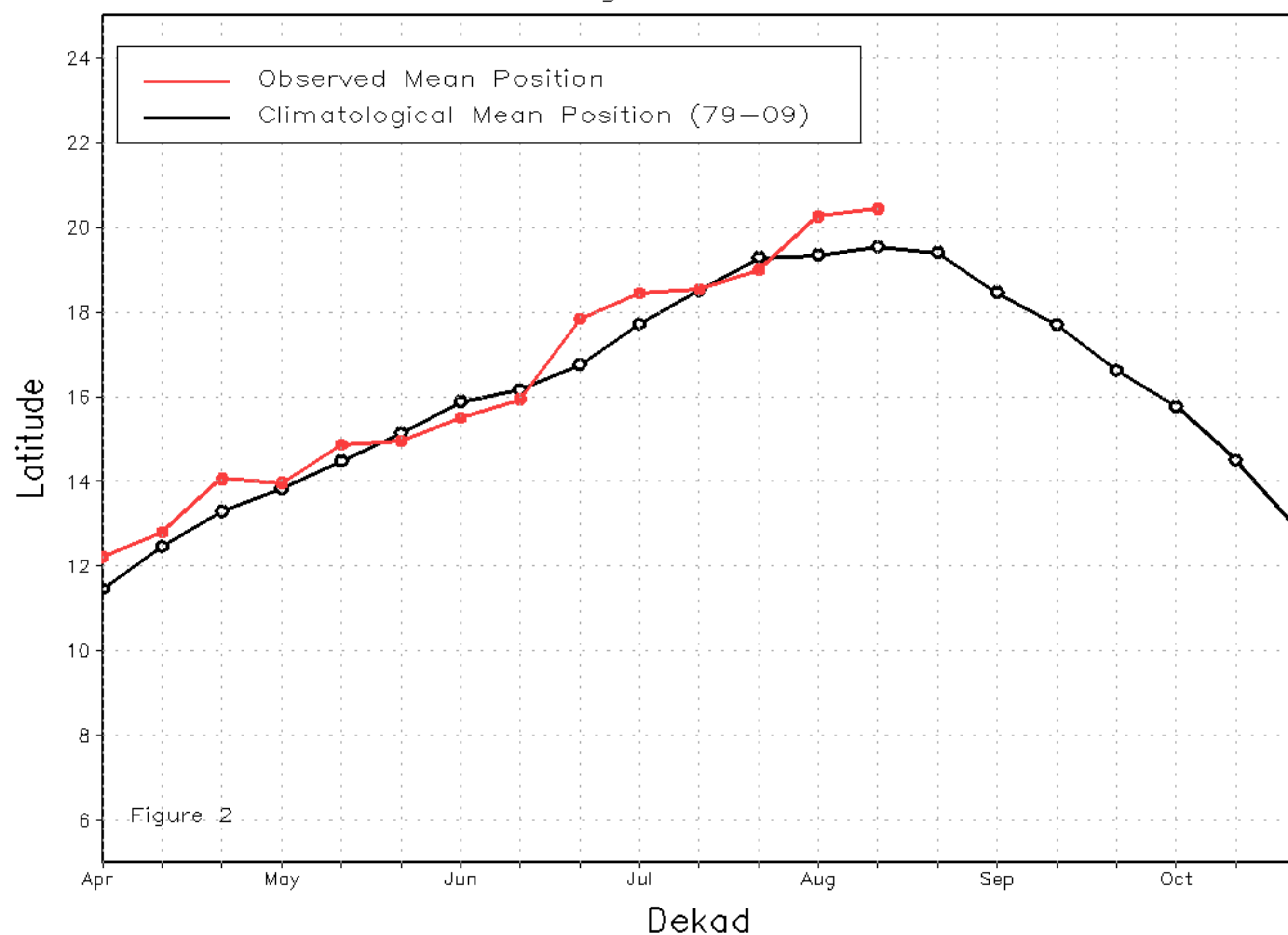
### Discussion:

From August 11-20, 2013, the ITF experienced an anomalously poleward shift in parts of West Africa, while the eastern portion of the ITF returned closer towards its normal mean position in mid-August. From 10W to 10E, the mean western portion of the ITF was estimated near 20.4 degrees latitude, which was approximately 1.0 degree above its climatological mean position for the second dekad of August. The ITF anomaly in the west was associated with strong lower-level convergence and heavy rainfall throughout parts of northern Mali and western Niger. From 20E to 35E, the mean eastern portion of the ITF was estimated 17.8 degrees latitude. Although the ITF in eastern Africa experienced a significant equatorward retreat compared to its previous position during early August, the mean eastern portion of the ITF remained nearly 0.5 degree above its normal position for mid-August. Figure 1 shows the current ITF position relative to the long-term average position during the second dekad of August and its previous position during the first dekad of August. Figures 2 and 3 are time series, showing the average latitudinal position of the western and eastern portion of the ITF, respectively, and their evolutions since April, 2013.

Current vs. Normal Dekadal ITF Position  
and RFE Accumulated Precipitation (mm)  
August 2013, Dekad 2



Mean Western Portion of the ITF: Averaged 10W to 10E  
As of: August 2013, Dekad 2



Mean Eastern Portion of the ITF: Averaged 20E to 35E  
As of: August 2013, Dekad 2

