



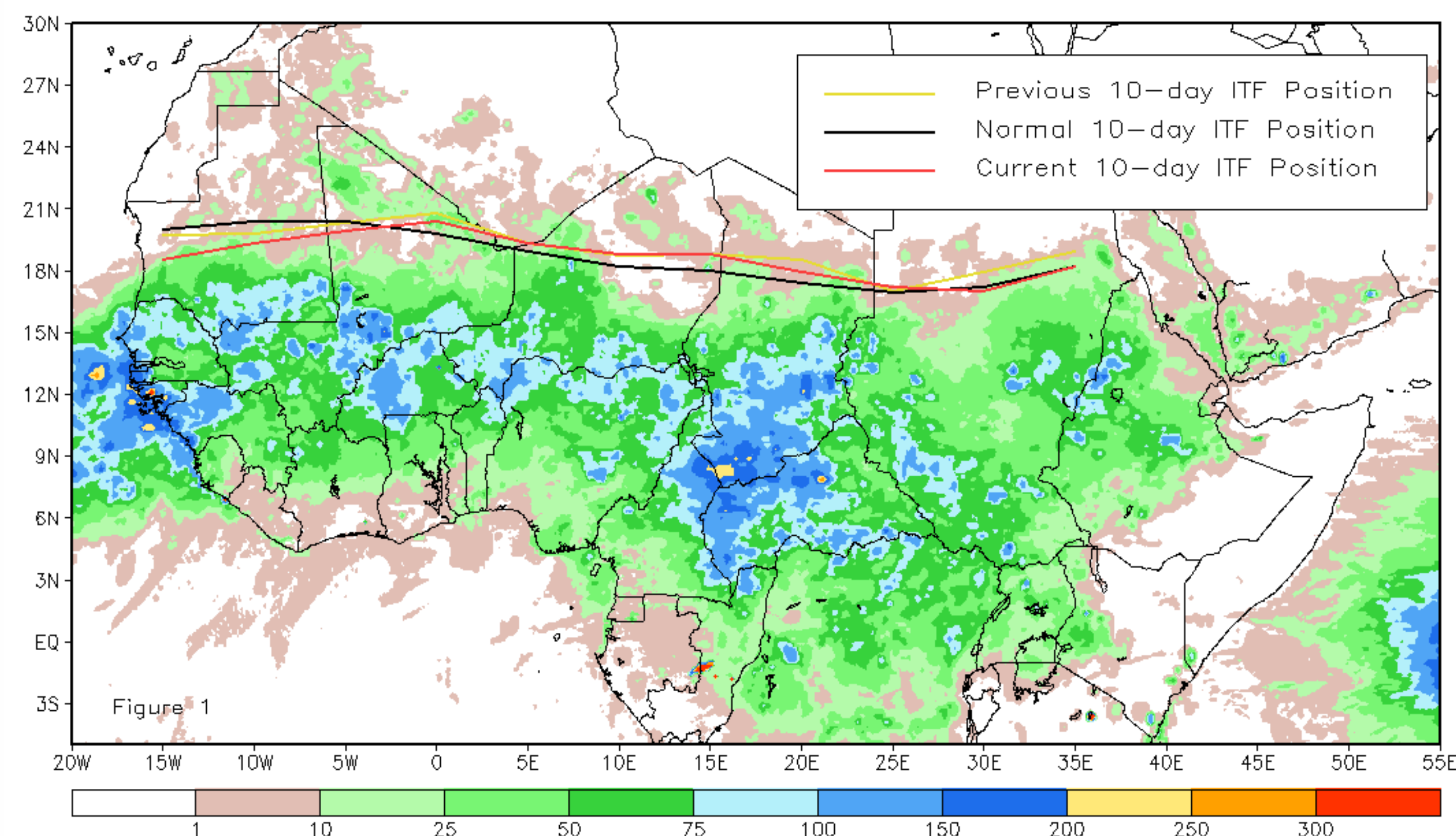
CPC Africa Desk InterTropical (ITF) Front Analysis

August 2012, Dekad 2

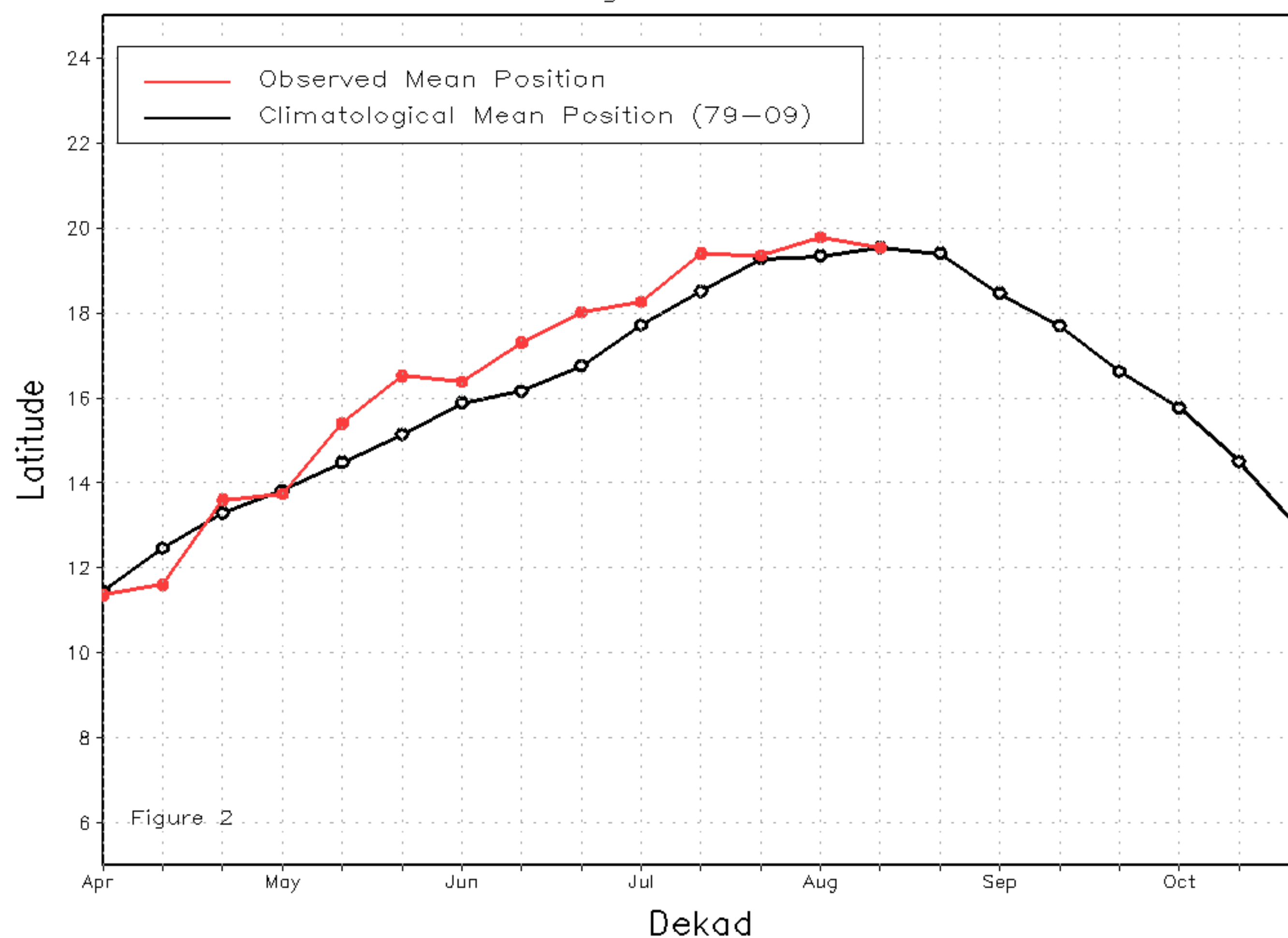
Discussion:

From Aug 11-20, 2012, the ITF over much of Africa remained above its climatological mean position for the 2nd dekad of August, but retreated considerably over many areas compared to its previous position in early August. The mean western portion of the ITF (10W-10E) was approximately located at 19.5 degrees N, and exhibited an anomalous equatorward position over parts of the far western Sahel. However, an anomalous poleward shift was observed over parts of eastern Mali and western Niger associated with heavy rains and strong southerly winds in the region. From 20E-35E, the mean eastern ITF position was approximated 17.6 and also remains slightly above its climatological mean position (17.4) for the second dekad of August. This dekad marks the 10th consecutive dekad where the ITF has been above-average in mean position across the east. Figure 1 shows the current ITF position relative to its long-term average position during the second dekad of August and its previous position during the first dekad of August. Figures 2 and 3 are time series, illustrating the mean latitudinal values of the western and eastern portion of the ITF, respectively, and their evolutions since April, 2012.

Current vs. Normal Dekadal ITF Position
and RFE Accumulated Precipitation (mm)
August 2012, Dekad 2



Mean Western Portion of the ITF: Averaged 10W to 10E
As of: August 2012, Dekad 2



Mean Eastern Portion of the ITF: Averaged 20E to 35E
As of: August 2012, Dekad 2

