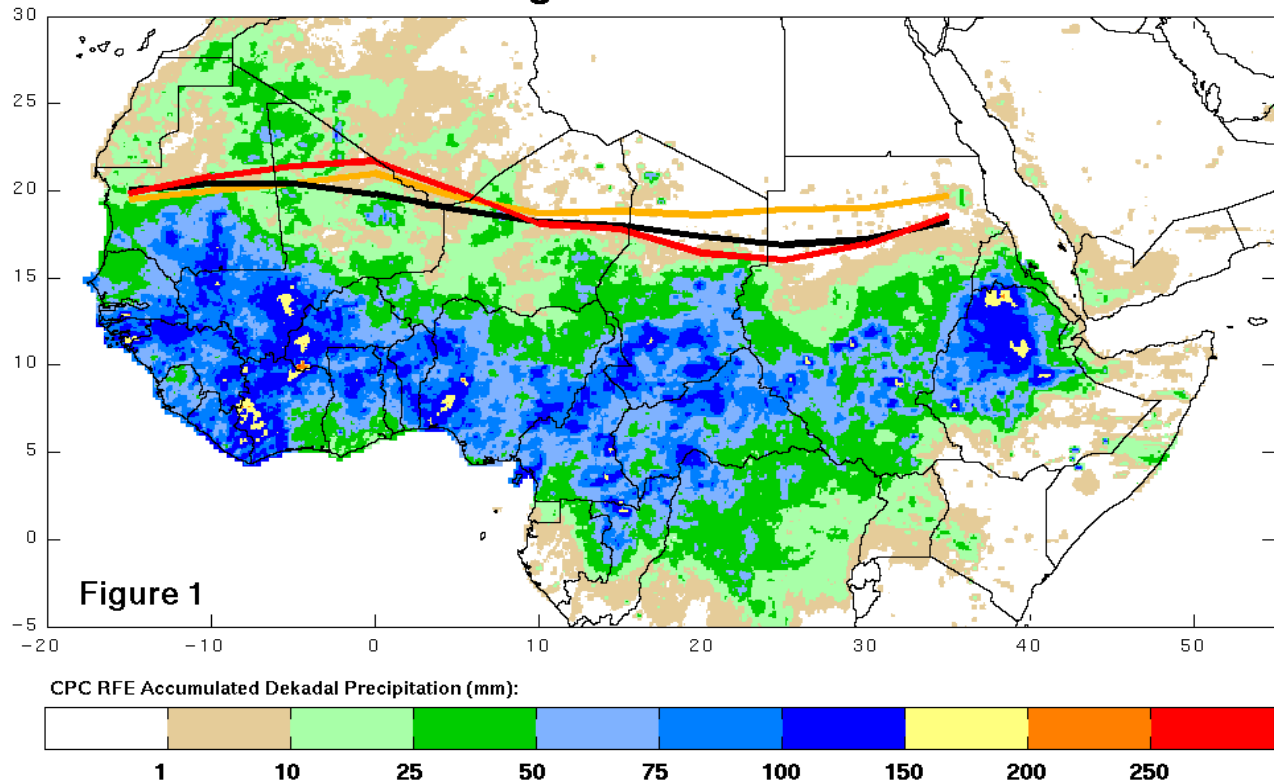
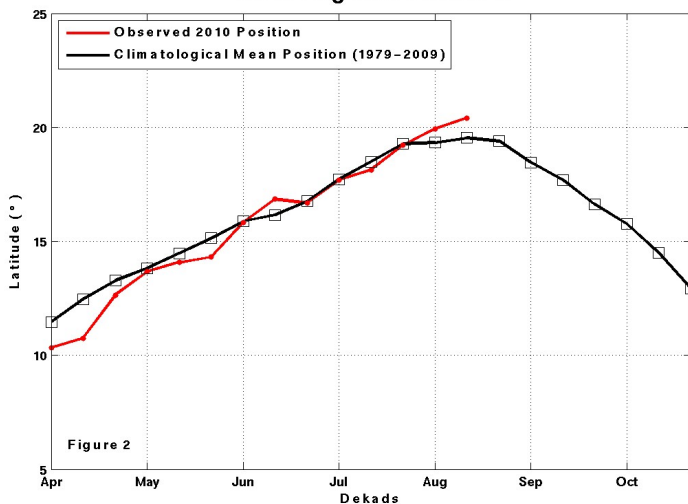


# Current vs. Mean Position of the Africa ITF Aug 2010 : Dekad 2

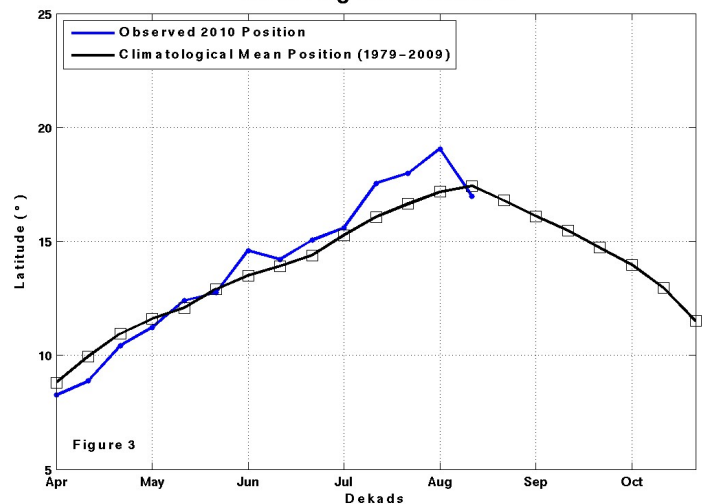


- Previous 10-Day Mean Position
- Normal 10-Day Mean Position
- Current 10-Day Mean position

Mean West Portion of ITF: Averaged 10°W to 10°E  
As of Aug 2010 : Dekad 2



Mean East Portion of ITF: Averaged 20°E to 35°E  
As of Aug 2010 : Dekad 2



From August 11-20, 2010, the ITF experienced a significant advancement over many parts of the western Sahel, while retreating southward over many parts of the central and eastern Sahel regions. The mean western portion of the ITF was approximated at 20.4N, which remains above the climatological mean for mid-August, and shifted well ahead of its previous position during early August. This anomalous advancement was attributed to strong, robust southerly winds extending from the Gulf of Guinea to parts of northern Mali and Mauritania during the early of half of the dekadal period. The mean eastern portion of the ITF was approximated at 17.0N, which fell below the climatological average position for the first time since late May. Compared to the previous dekad, the greatest difference in latitude was observed over parts of Sudan and Chad, where there was prevailing northerly, dry, winds that suppressed much of the convective rainfall in these areas. The above map (Figure 1) shows the current ITF position relative to the positions of climatology for the second dekad of August, and its previous placement during the first dekad of August. Figures 2 and 3 are time series illustrating the mean latitudinal values off the western and eastern portions of the ITF, respectively, and their observed progressions since April, 2010.