



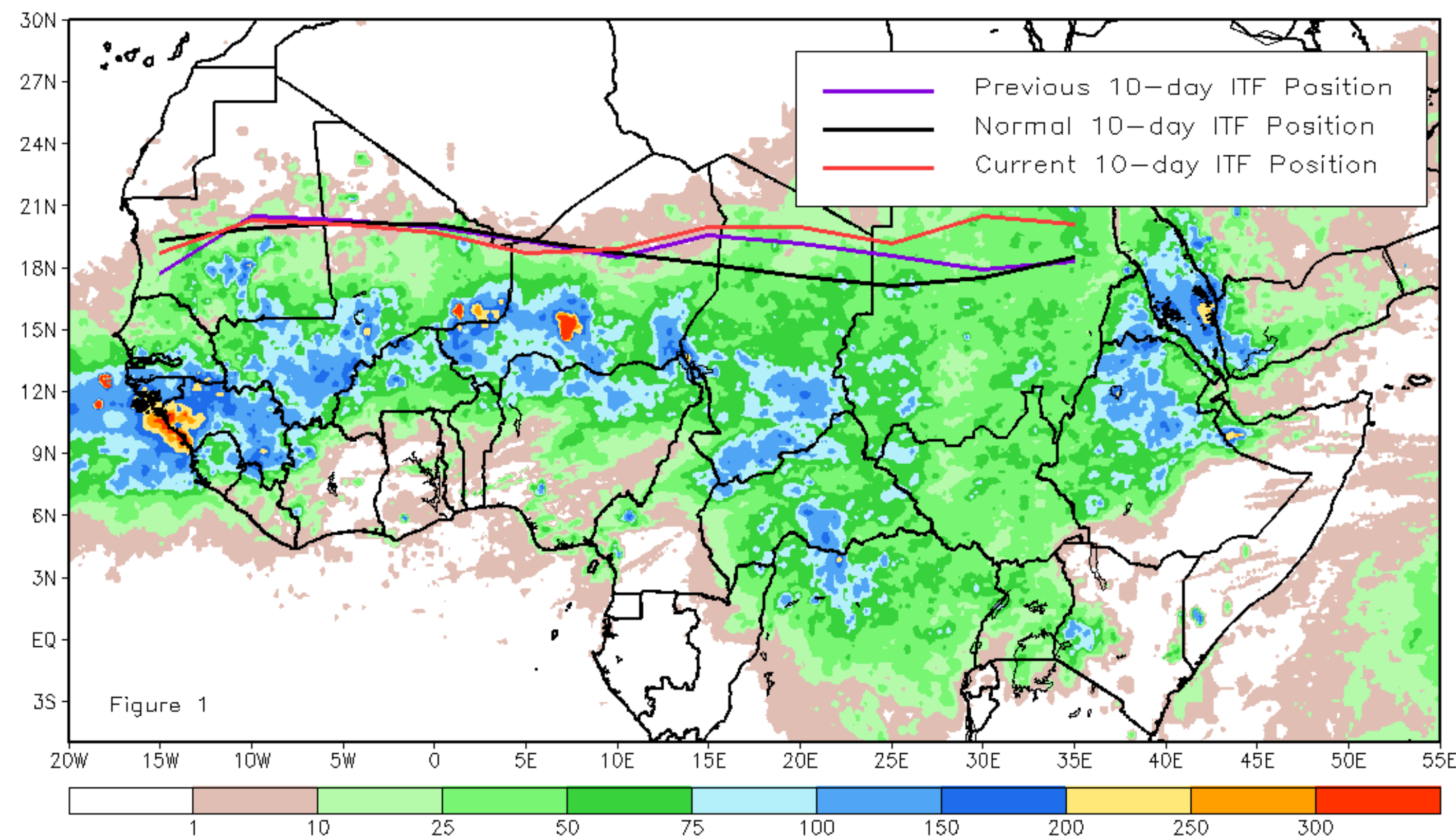
CPC Africa Desk InterTropical (ITF) Front Analysis

August 2024, Dekad 1

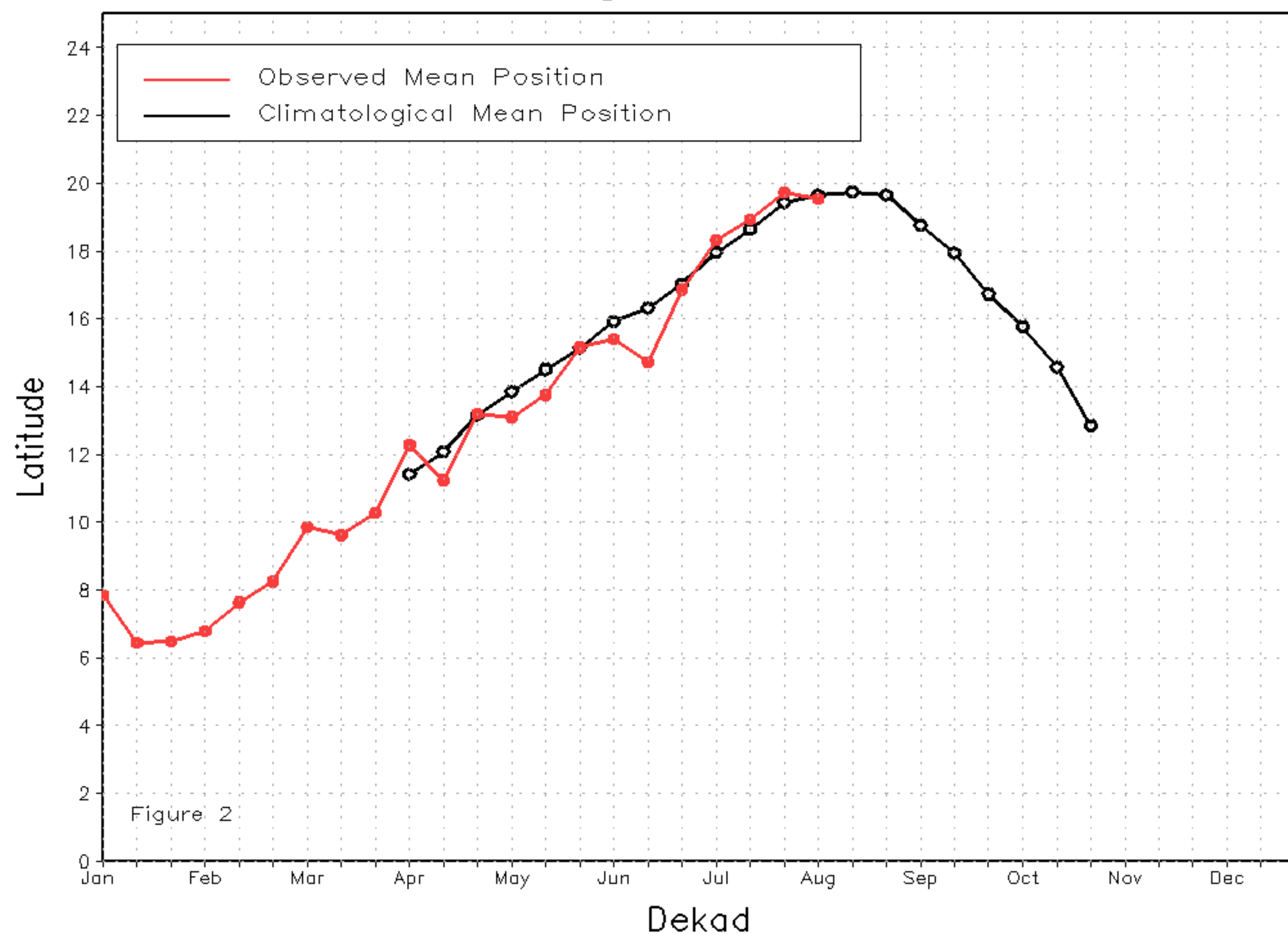
Discussion:

From August 1-10, the Inter-Tropical Front (ITF) moved southward in the west and northward in the east of Africa. The western (10W-10E) portion of the ITF was located approximately at 19.5N, which was below the climatological position by 0.2 degrees. Also, at the eastern (20E-35E) portion, the ITF was approximated at 20.0N, which was above the long-term average position by 2.3 degrees. Figure 1 displays the current position of the ITF relative to the climatological position during the 1st dekad of August and its previous position during the 3rd dekad of July. Figures 2 and 3 are time series, illustrating the latitudinal positions for the western and eastern portions of the ITF, respectively, and their seasonal evolutions since the beginning of April 2024.

Current vs. Normal Dekadal ITF Position
and RFE Accumulated Precipitation (mm)
August 2024, Dekad 1



Mean Western Portion of the ITF: Averaged 10W to 10E
As of: August 2024, Dekad 1



Mean Eastern Portion of the ITF: Averaged 20E to 35E
As of: August 2024, Dekad 1

