



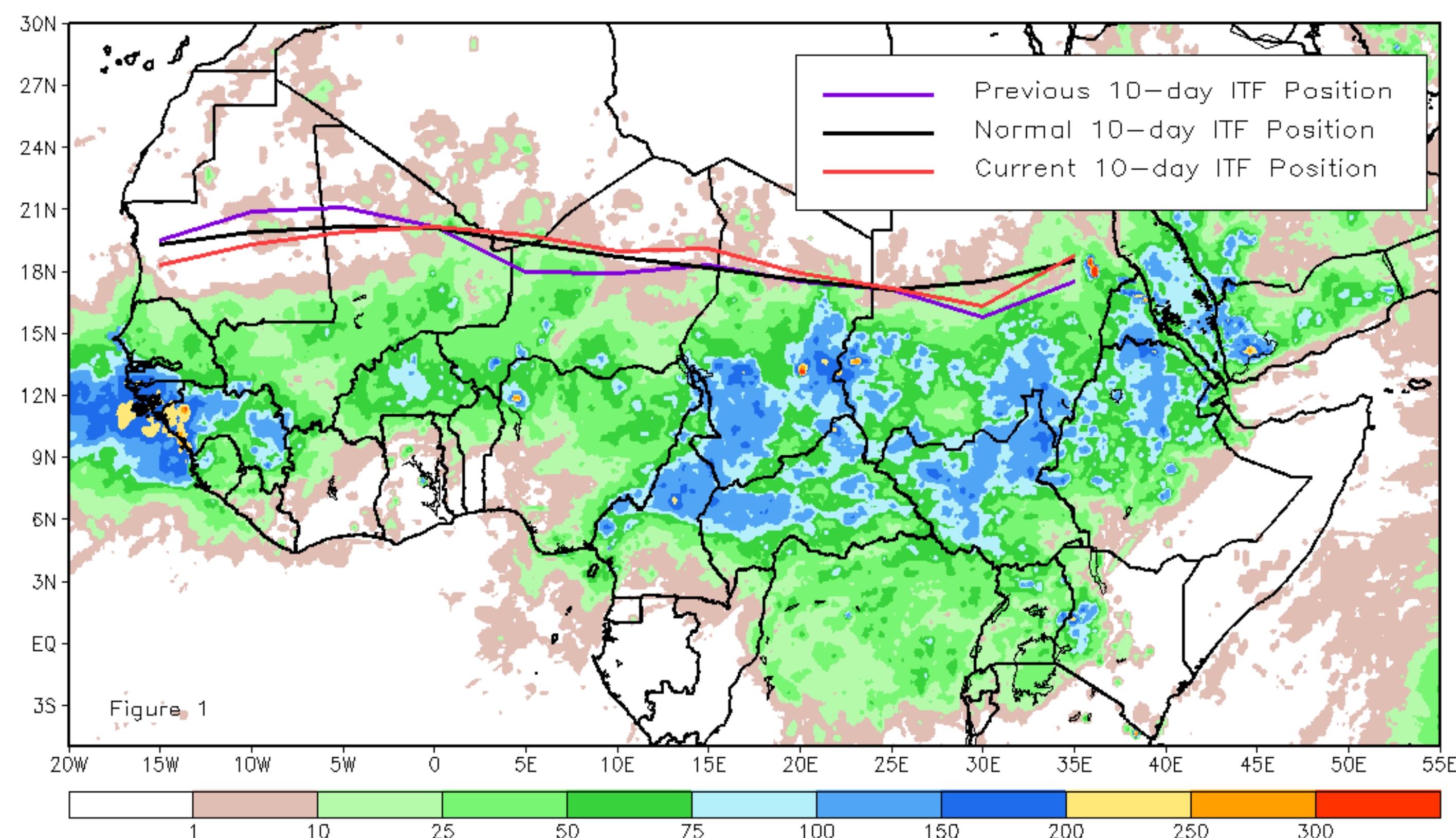
CPC Africa Desk InterTropical (ITF) Front Analysis

August 2022, Dekad 1

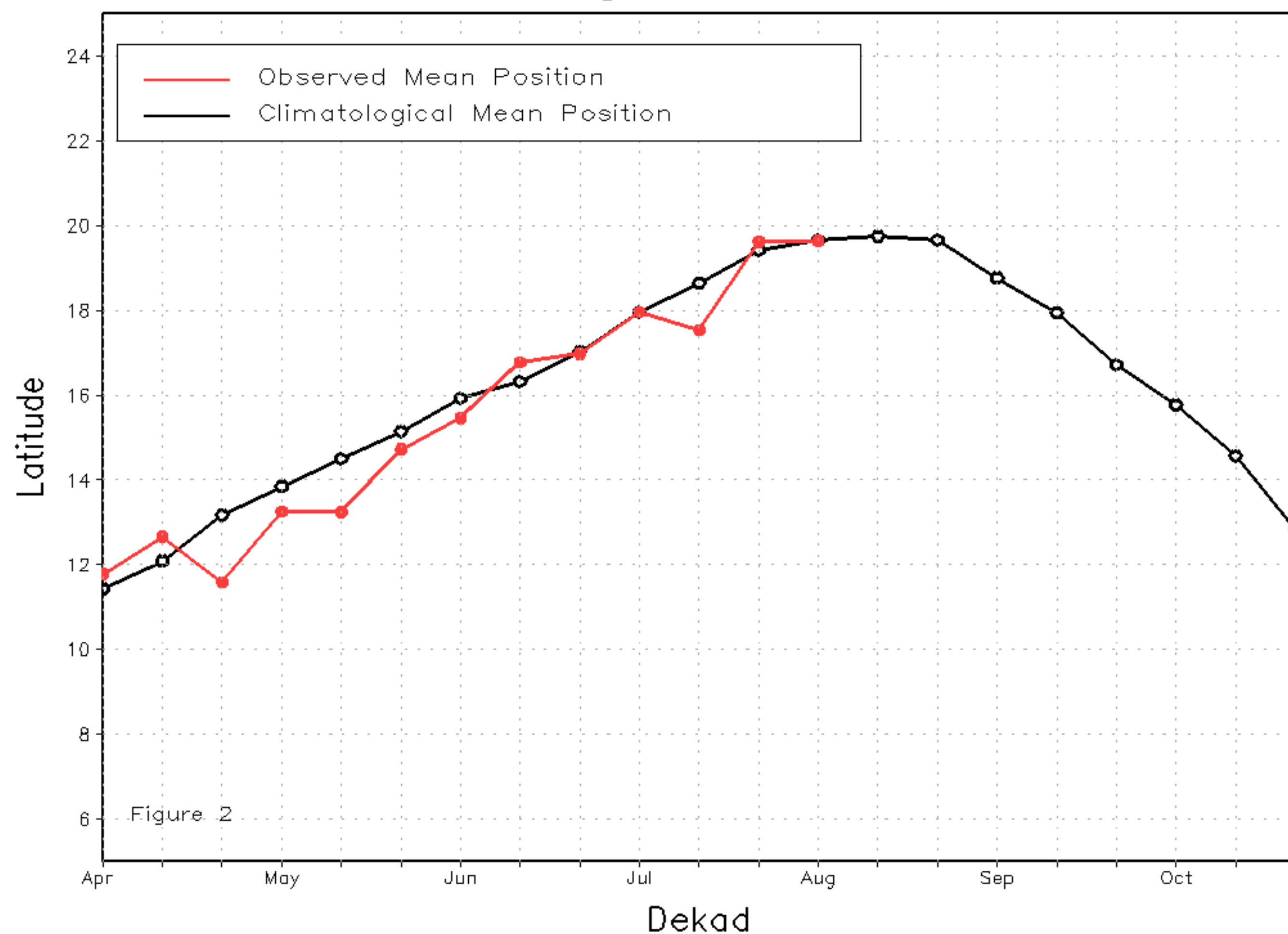
Discussion:

From 1-10 August, the ITF moved south on the western side but moved north on the eastern side relative to its previous position. This resulted in an overall anomalous southerly position. The western (10W-10E) portion of the ITF was located approximately at 19.6N, which was below the climatology position by 0.1 degree. The eastern (20E-35E) portion of the ITF was approximated at 17.5N, which was below the climatological position by 0.2 degree. Figure 1 displays the current position of the ITF relative to the long-term average position during the 1st dekad of August and its previous position during the 3rd dekad of July. Figures 2 and 3 are time series, illustrating the latitudinal values of the western and eastern portions of the ITF, respectively, and their seasonal evolutions since the beginning of April 2022.

Current vs. Normal Dekadal ITF Position
and RFE Accumulated Precipitation (mm)
August 2022, Dekad 1



Mean Western Portion of the ITF: Averaged 10W to 10E
As of: August 2022, Dekad 1



Mean Eastern Portion of the ITF: Averaged 20E to 35E
As of: August 2022, Dekad 1

