



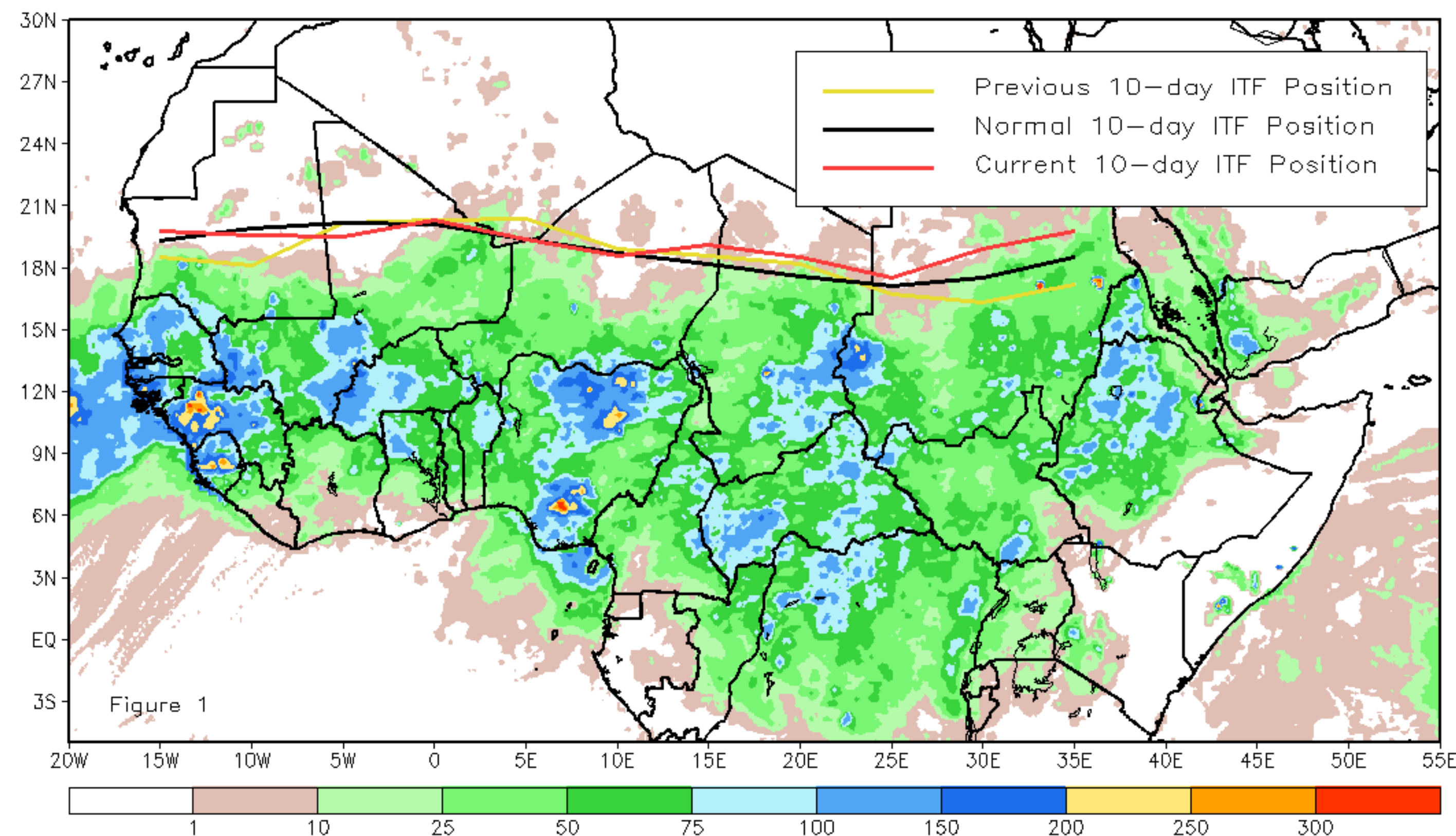
CPC Africa Desk InterTropical (ITF) Front Analysis

August 2021, Dekad 1

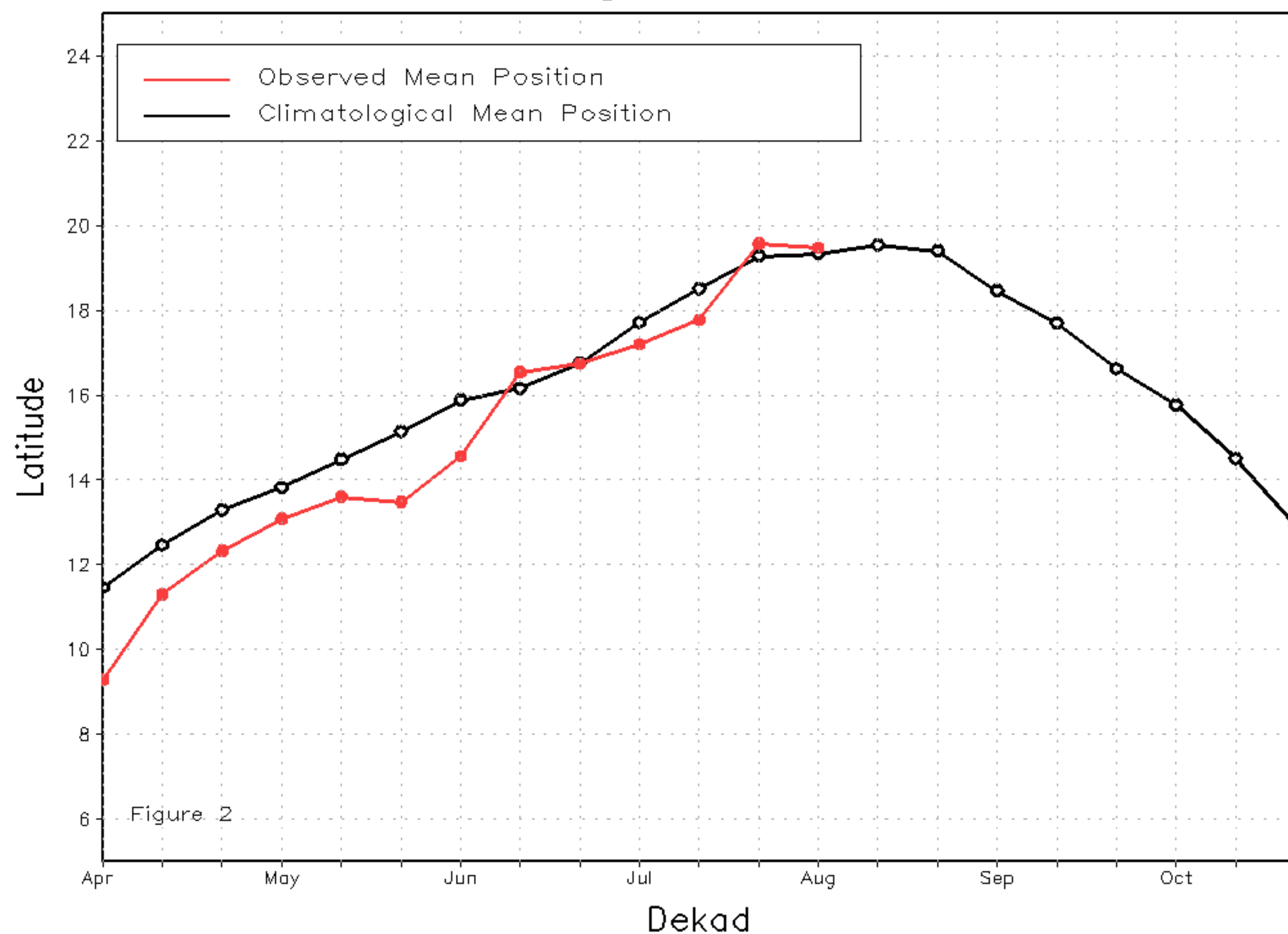
Discussion:

From 1-10 August, the ITF advanced farther north along its western and eastern edges; but remained nearly stationary elsewhere. From 10W-10E, the mean western portion of the ITF was located at 19.5N, trailing the mean position by 0.2 degree. From 20E-35E, the mean eastern portion of the ITF was approximated at 18.7N, leading the climatological position by 1 degree. The near-average to anomalous northerly position of the ITF could partially explain the wetness over many areas of the far western West Africa and eastern Africa during the period. Figure 1 displays the current position of the ITF relative to the long-term average position during the 1st dekad of August and its previous position during the 3rd dekad of July. Figures 2 and 3 are time series, illustrating the latitudinal values of the western and eastern portions of the ITF, respectively, and their seasonal evolutions since the beginning of April, 2021.

Current vs. Normal Dekadal ITF Position
and RFE Accumulated Precipitation (mm)
August 2021, Dekad 1



Mean Western Portion of the ITF: Averaged 10W to 10E
As of: August 2021, Dekad 1



Mean Eastern Portion of the ITF: Averaged 20E to 35E
As of: August 2021, Dekad 1

