



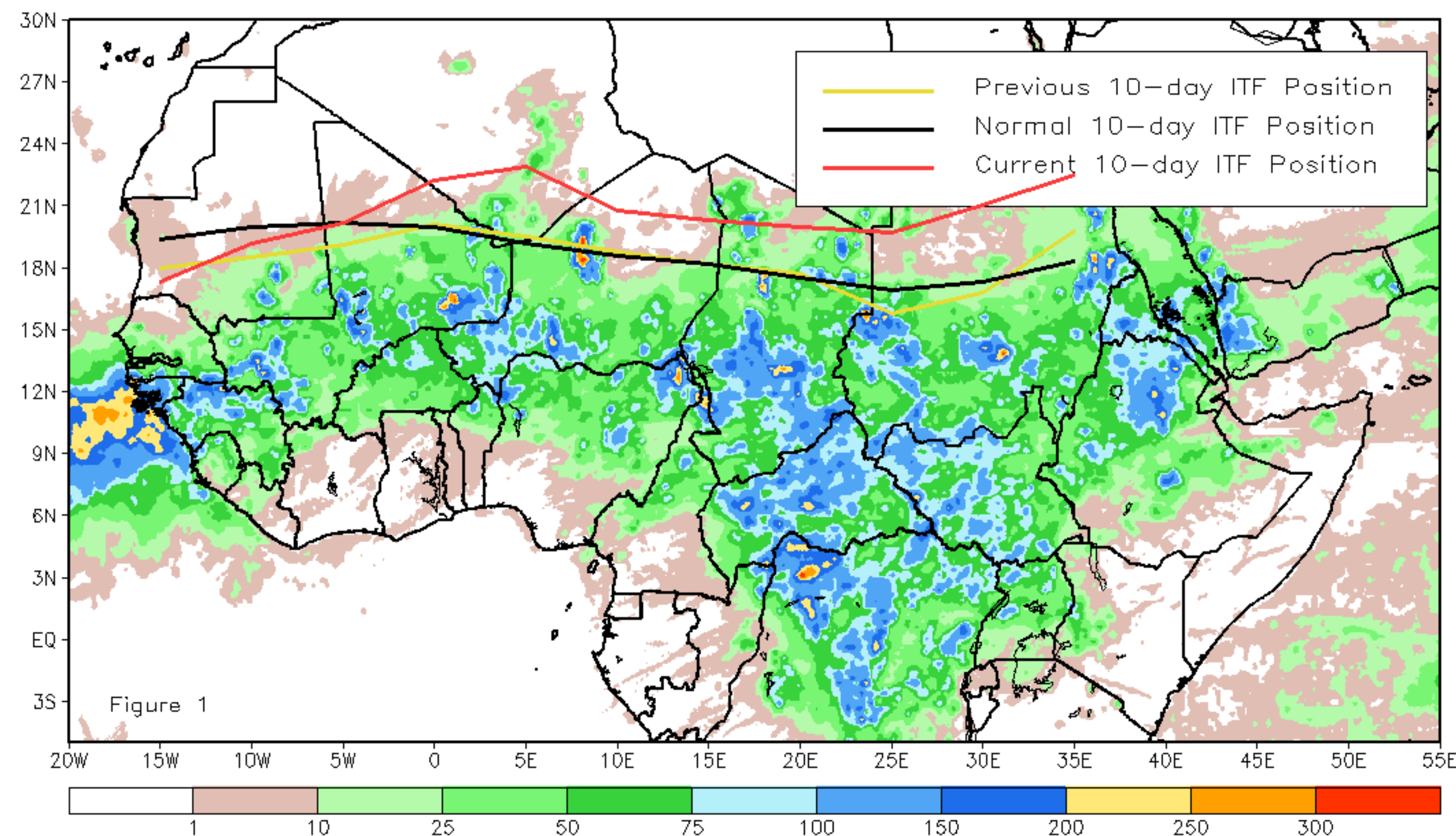
# CPC Africa Desk InterTropical (ITF) Front Analysis

## August 2020, Dekad 1

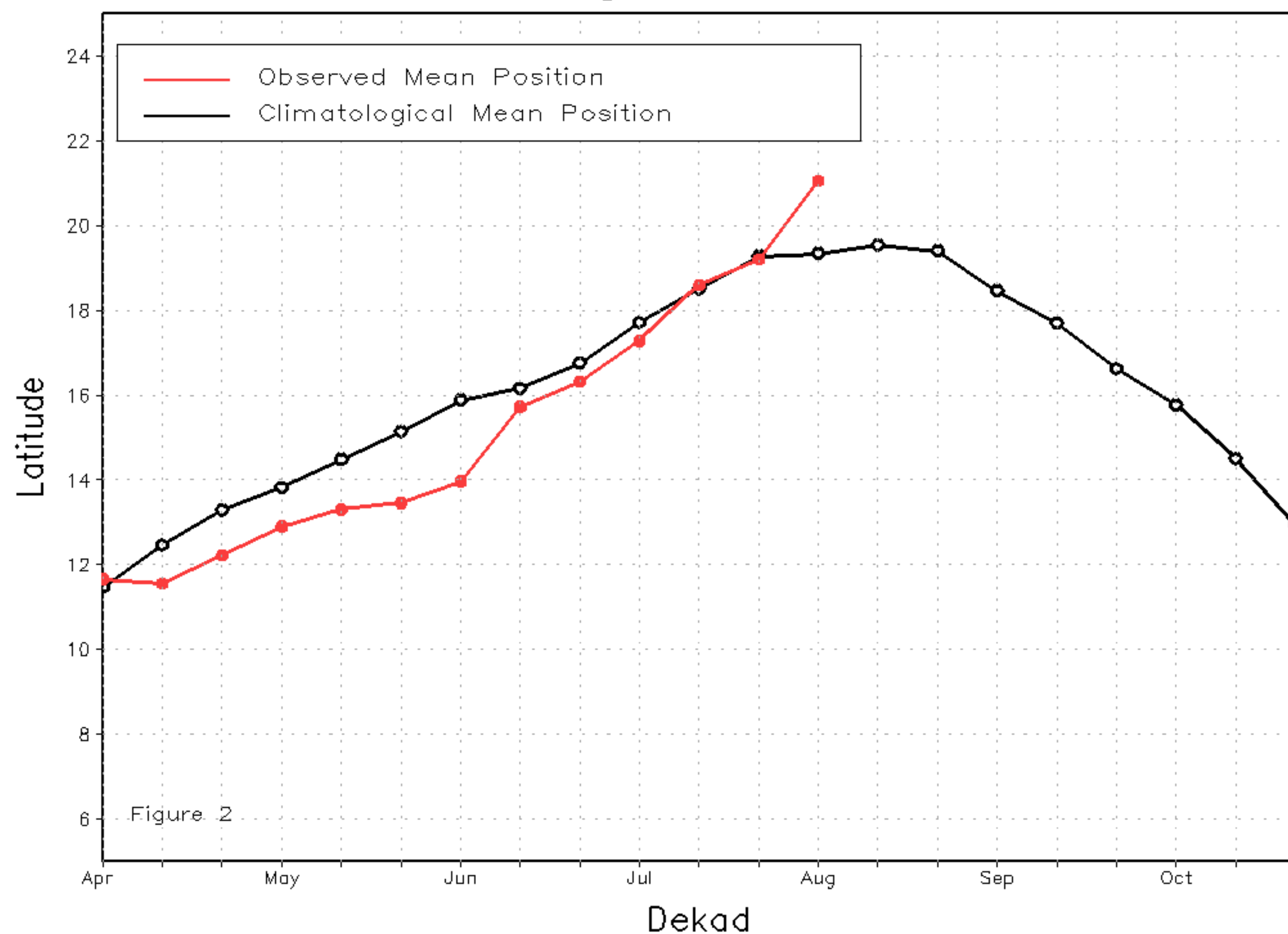
### Discussion:

From August 1-10, the ITF experienced a northward surge, particularly along its central and eastern portions relative to its previous position. As a result, the ITF was located anomalously north of the long-term average position during this time of the year. From 10W to 1E, the ITF was approximated at 21.1N, which was to the north of the mean position by 1.5 degrees. This abnormal position brought above-average rainfall across central Mali and parts of Niger. Similarly, from 20E to 35E, the ITF was located to the north of the long-term average position by 3.5 degrees. This resulted in wetness over central and eastern Sudan. Figure 1 displays the current position of the ITF relative to the climatological position during the 1st dekad of August and its previous position during the 3rd dekad of July. Figures 2 and 3 are time series, illustrating the latitudinal values of the western and eastern portions of the ITF, respectively, and their seasonal evolutions since April, 2020.

Current vs. Normal Dekadal ITF Position  
and RFE Accumulated Precipitation (mm)  
August 2020, Dekad 1



Mean Western Portion of the ITF: Averaged 10W to 10E  
As of: August 2020, Dekad 1



Mean Eastern Portion of the ITF: Averaged 20E to 35E  
As of: August 2020, Dekad 1

