



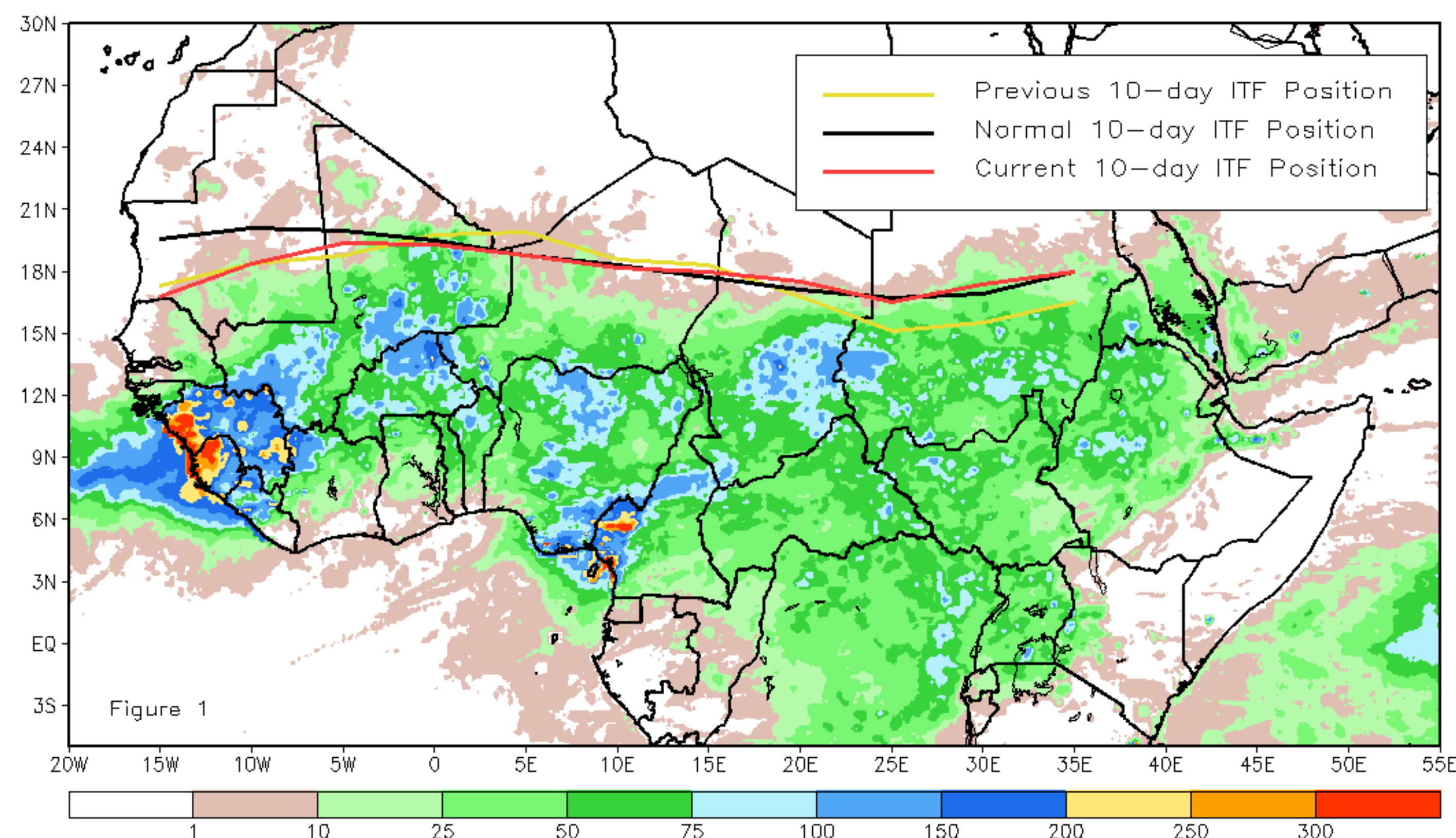
# CPC Africa Desk InterTropical (ITF) Front Analysis

## August 2019, Dekad 1

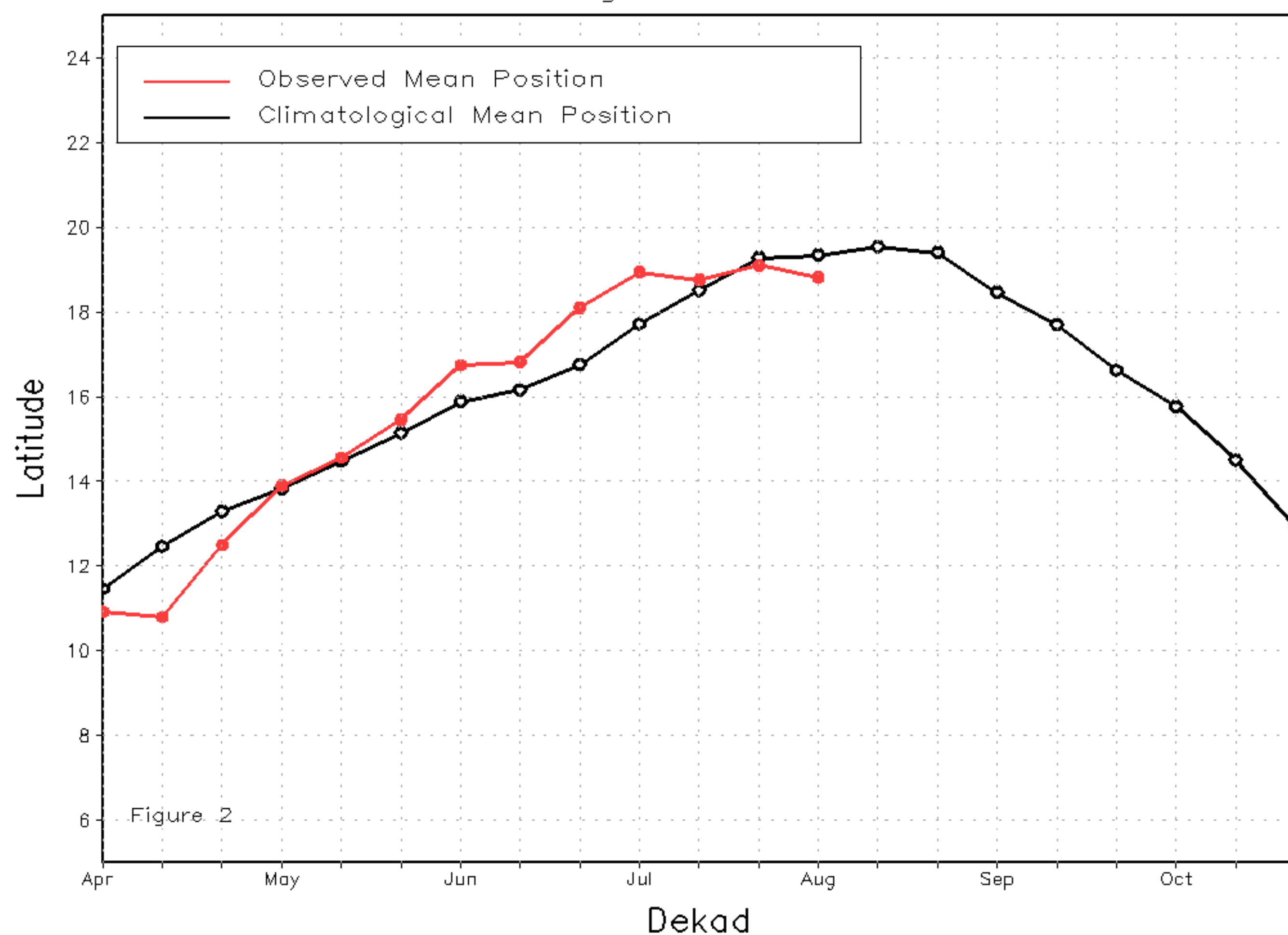
### Discussion:

From August 1-10, the ITF did not move significantly from its position during the previous dekad in West Africa, but advanced well northward at its eastern end. The mean position of the western (15W-0E) portion of the ITF is approximated at 18.8N, which is south of its previous location during the last dekad of July. With the southward depression of the western terminus, rainfall has been very poor in Senegal and Mauritania. Between 0E-35E, the ITF was approximated at 17.4N, slightly north of its climatological position by 0.2 degrees and a substantial northward jump of 1.4 degrees from the previous dekad. As a result, near or above average rainfall was widespread across Chad and Sudan during the dekad. Figure 1 shows the current position of the ITF relative to the long-term average position during the 1st dekad of August and its previous position during the 3rd dekad of July. Figures 2 and 3 are time series, illustrating the latitudinal values of the western and eastern portions of the ITF, respectively, and their seasonal evolutions since April, 2019.

Current vs. Normal Dekadal ITF Position  
and RFE Accumulated Precipitation (mm)  
August 2019, Dekad 1



Mean Western Portion of the ITF: Averaged 10W to 10E  
As of: August 2019, Dekad 1



Mean Eastern Portion of the ITF: Averaged 20E to 35E  
As of: August 2019, Dekad 1

