



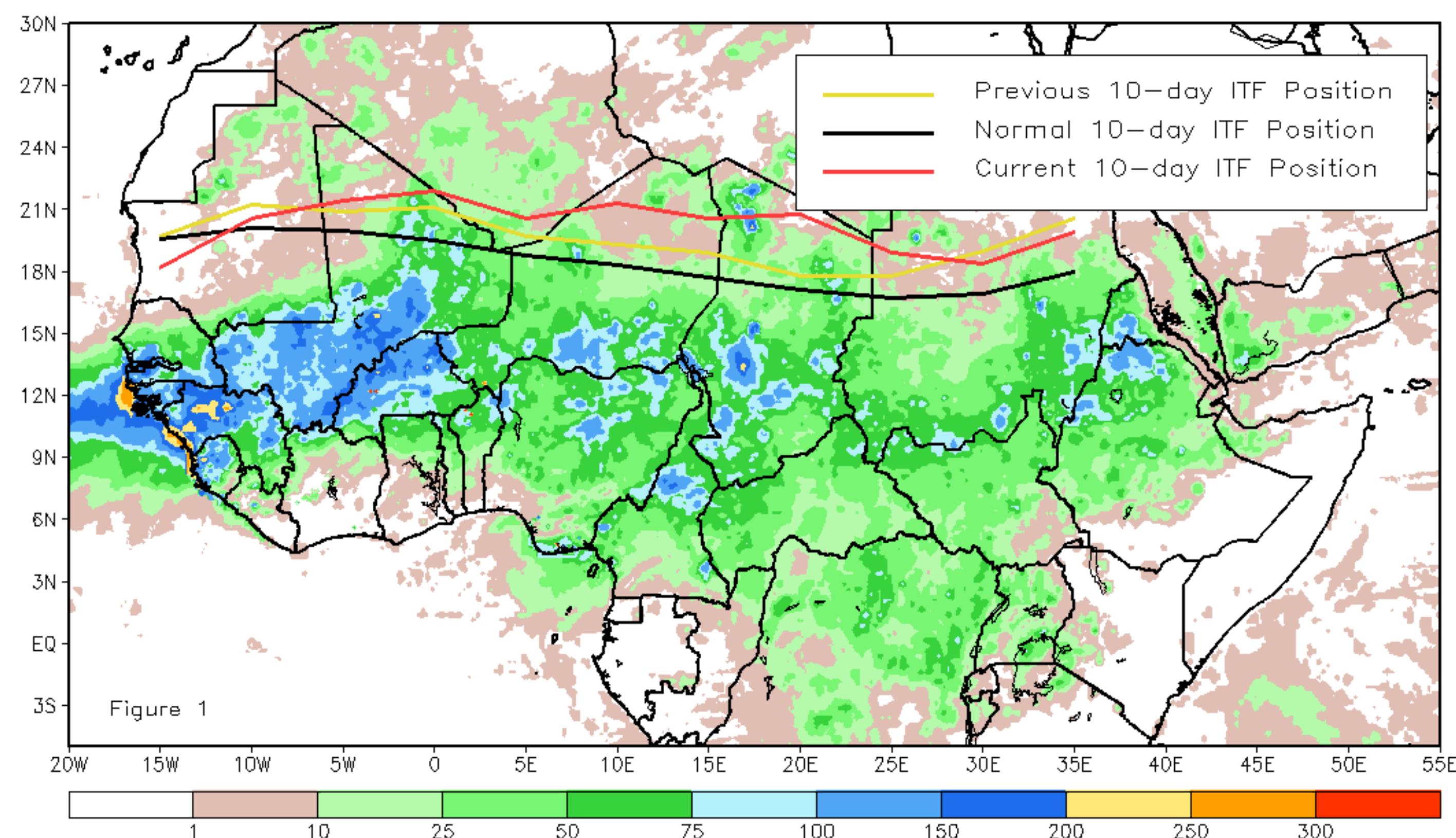
# CPC Africa Desk InterTropical (ITF) Front Analysis

## August 2018, Dekad 1

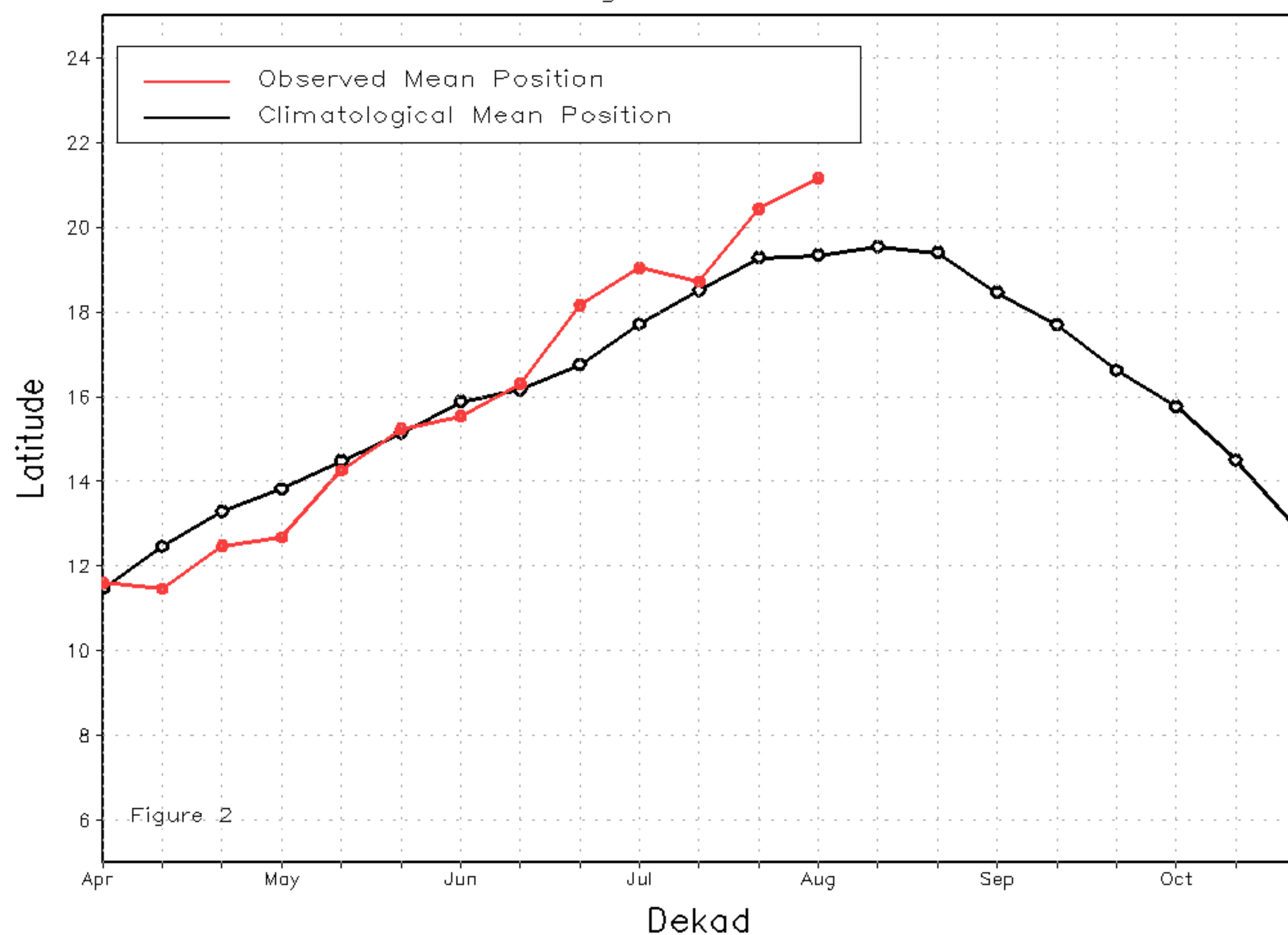
### Discussion:

From August 1-10, the ITF continued its northward movement across Africa and positioned itself to the north of the long-term position. The mean western (10W-10E) portion of the ITF was located at 19.9N, which was to the north of the average position by 1.9 degrees. This anomalous northerly position resulted in above-average rainfall across the Sahel. To the east, the mean eastern (20E-35E) portion of the ITF was approximated at 21.2N, which led the mean position by 1.9 degrees. This resulted in average to above-average moisture conditions over Sudan. Figure 1 shows the current position of the ITF relative to its mean climatological (black) position during the 1st dekad of August and its previous (yellow) position during the 3rd dekad of July. Figures 2 and 3 are time series, illustrating the mean latitudinal values of the western and eastern portion of the ITF, respectively, and their seasonal evolutions since April, 2018.

Current vs. Normal Dekadal ITF Position  
and RFE Accumulated Precipitation (mm)  
August 2018, Dekad 1



Mean Western Portion of the ITF: Averaged 10W to 10E  
As of: August 2018, Dekad 1



Mean Eastern Portion of the ITF: Averaged 20E to 35E  
As of: August 2018, Dekad 1

