



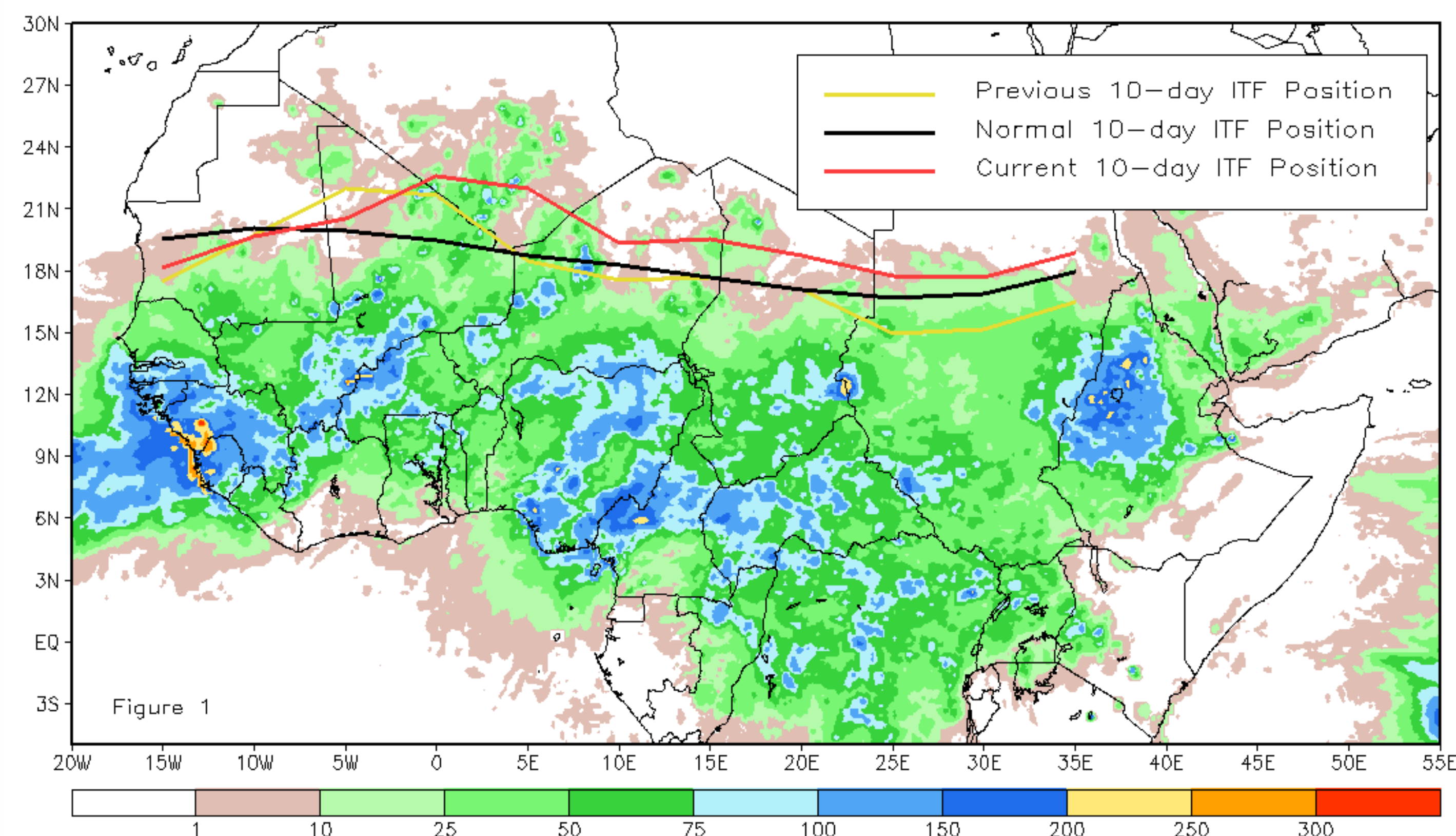
CPC Africa Desk InterTropical (ITF) Front Analysis

August 2017, Dekad 1

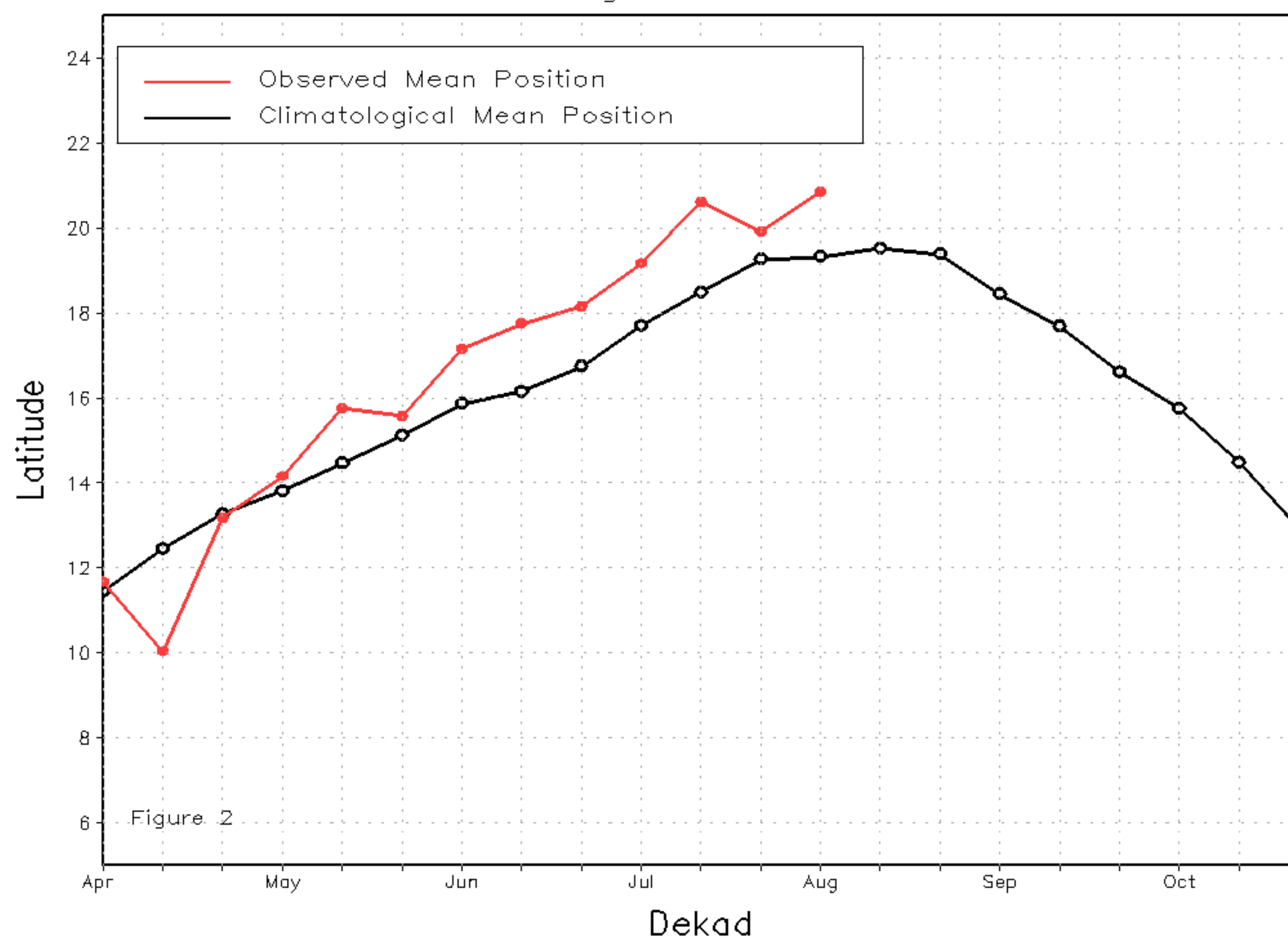
Discussion:

From August 1-10, the ITF moved farther north, with a significant surge across the central portions of West Africa. The mean western (10W-10E) portion of the ITF was located near 20.9N, which was anomalously north of the climatological position by 1.6 degrees. This resulted in moderate to heavy and above-average rain over areas of Mali, Burkina Faso, and Niger. The mean eastern (20E-35E) portion of the ITF was approximated at 18.3N, which also was to the north of the average position by 1.1 degree. This resulted in light to moderate and above-average rain in central and eastern Sudan. Figure 1 shows the current position of the ITF relative to its climatological position during the 1st dekad of August and its previous position during the 3rd dekad of July. Figures 2 and 3 are time series, illustrating the mean latitudinal values of the western and eastern portion of the ITF, respectively, and their evolutions since April, 2017.

Current vs. Normal Dekadal ITF Position
and RFE Accumulated Precipitation (mm)
August 2017, Dekad 1



Mean Western Portion of the ITF: Averaged 10W to 10E
As of: August 2017, Dekad 1



Mean Eastern Portion of the ITF: Averaged 20E to 35E
As of: August 2017, Dekad 1

