



# CPC Africa Desk InterTropical (ITF) Front Analysis

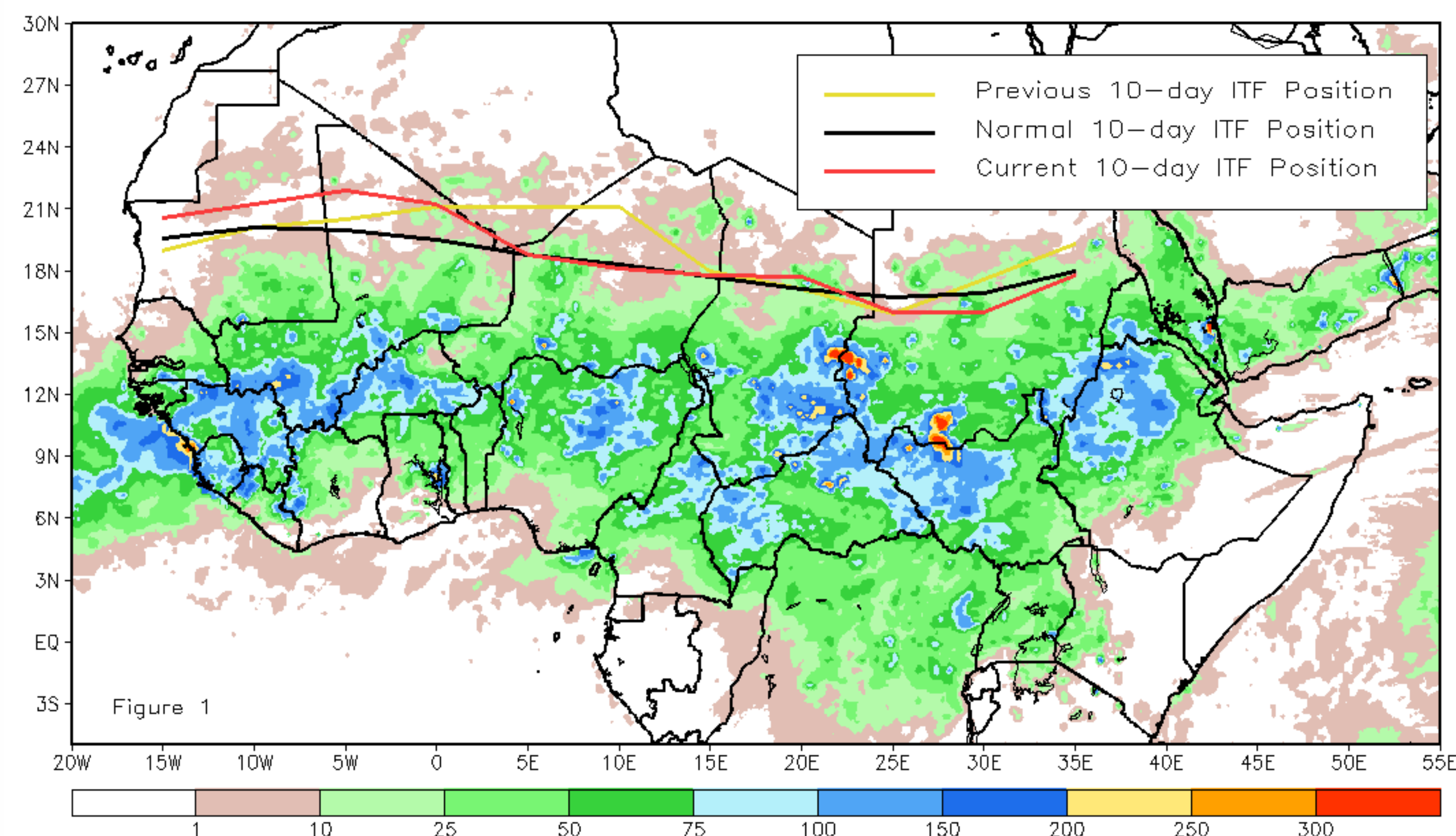
## August 2016, Dekad 1

### Discussion:

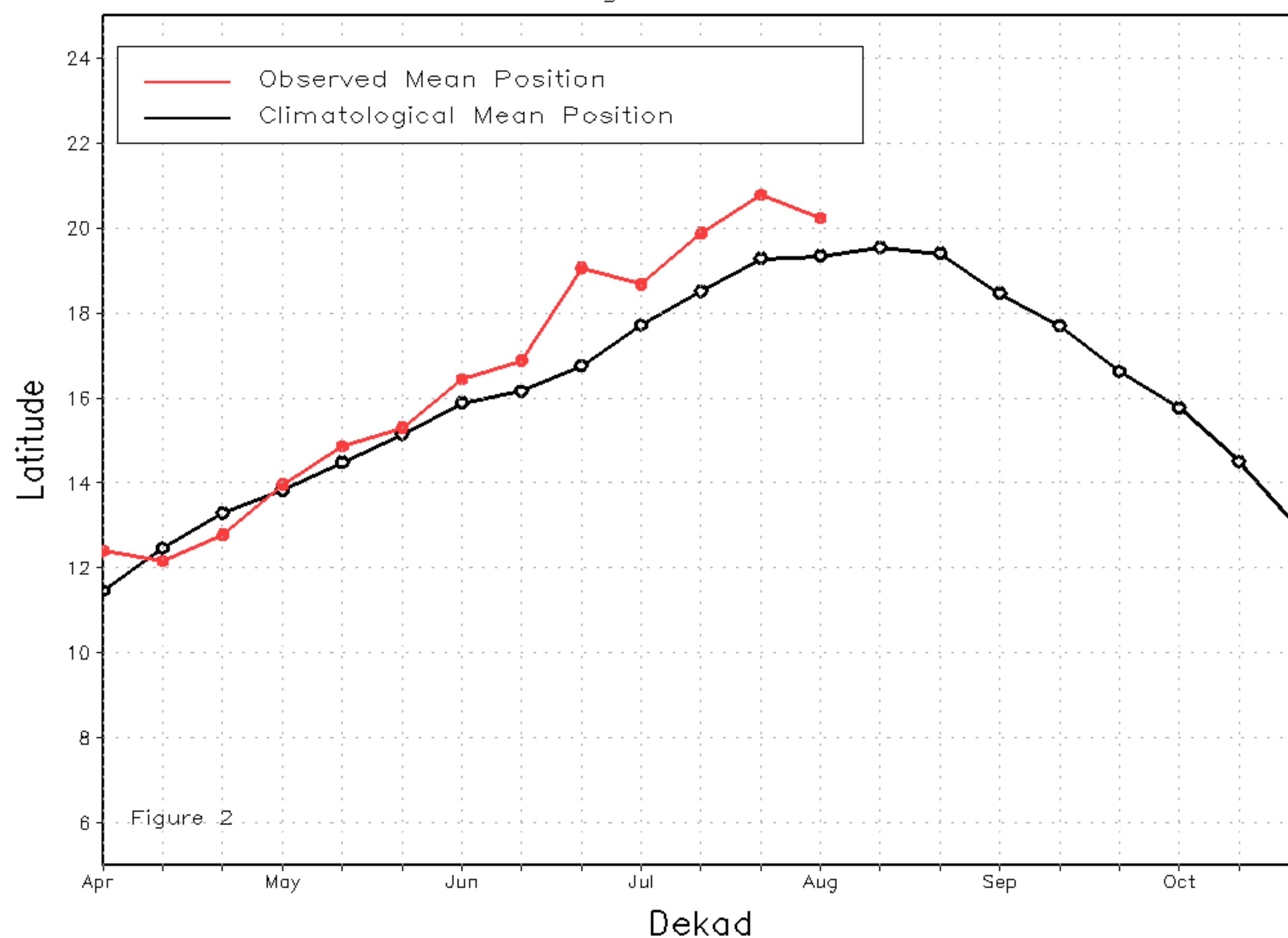
From Aug 1-10, the ITF continued its northward advancement closer towards the climatological peak in latitude during the month August. From 10W-10E, the mean western ITF position was estimated at 20.2 degrees North, nearly 1.0 degree above the climatological normal position (19.3N) for early August. The western portion of the ITF has maintained an above-normal position since early June, and has been associated with significantly heavy amounts of rainfall across many Sahelian countries during this time. From 20E-35E, the mean eastern portion of the ITF was estimated at 16.9 degrees North, and fell slightly below the climatological normal position (17.2N) for early August. Figure 1 shows the current position of the ITF relative to its climatological normal position during the 1st dekad of August, and its previous location during the 3rd dekad of July. Figures 2 and 3 are time series, illustrating the mean latitudinal values of the western and eastern portions of the ITF, respectively, and their evolution since April, 2016.

Current vs. Normal Dekadal ITF Position  
and RFE Accumulated Precipitation (mm)

August 2016, Dekad 1



Mean Western Portion of the ITF: Averaged 10W to 10E  
As of: August 2016, Dekad 1



Mean Eastern Portion of the ITF: Averaged 20E to 35E  
As of: August 2016, Dekad 1

