



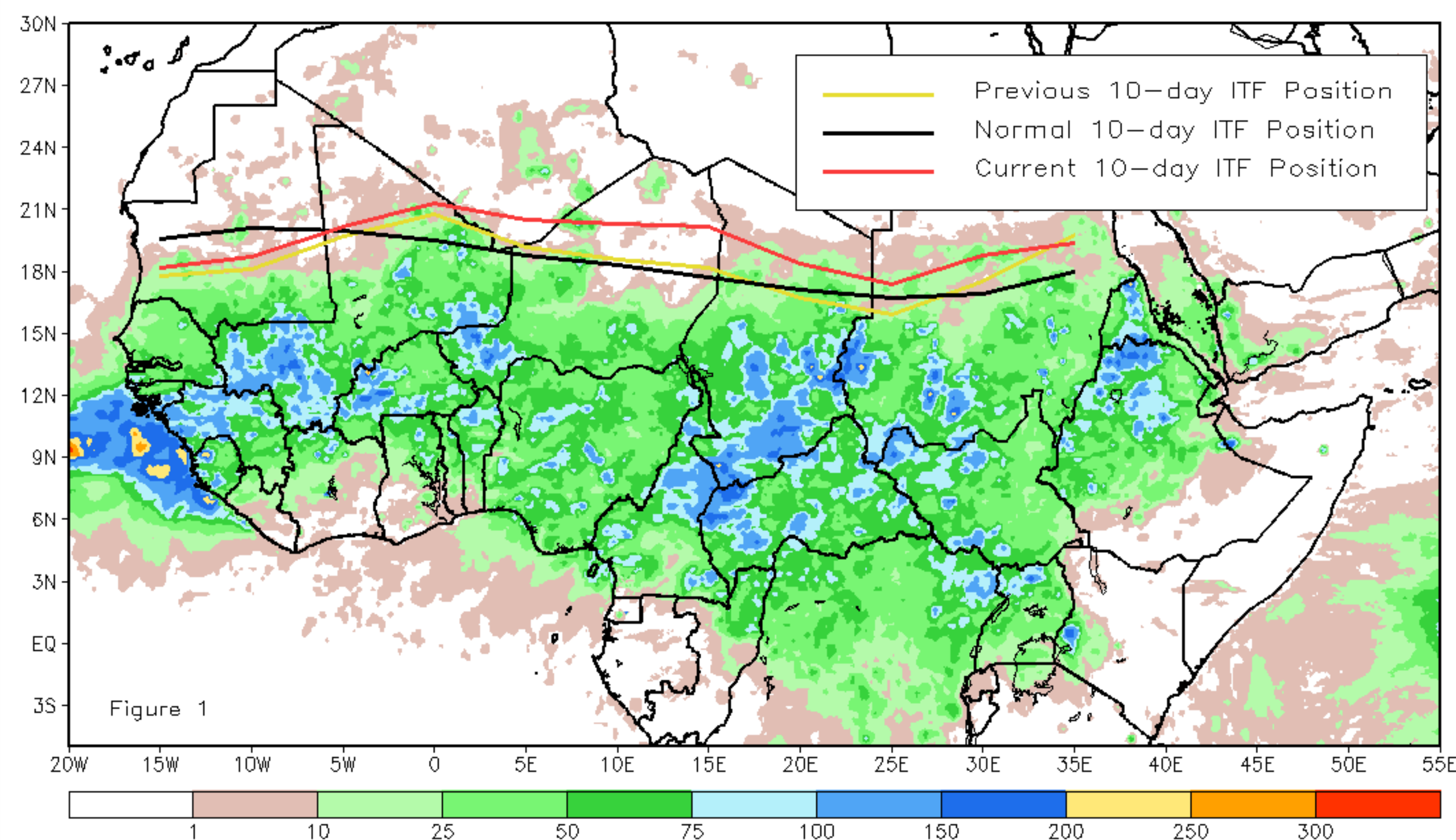
CPC Africa Desk InterTropical (ITF) Front Analysis

August 2014, Dekad 1

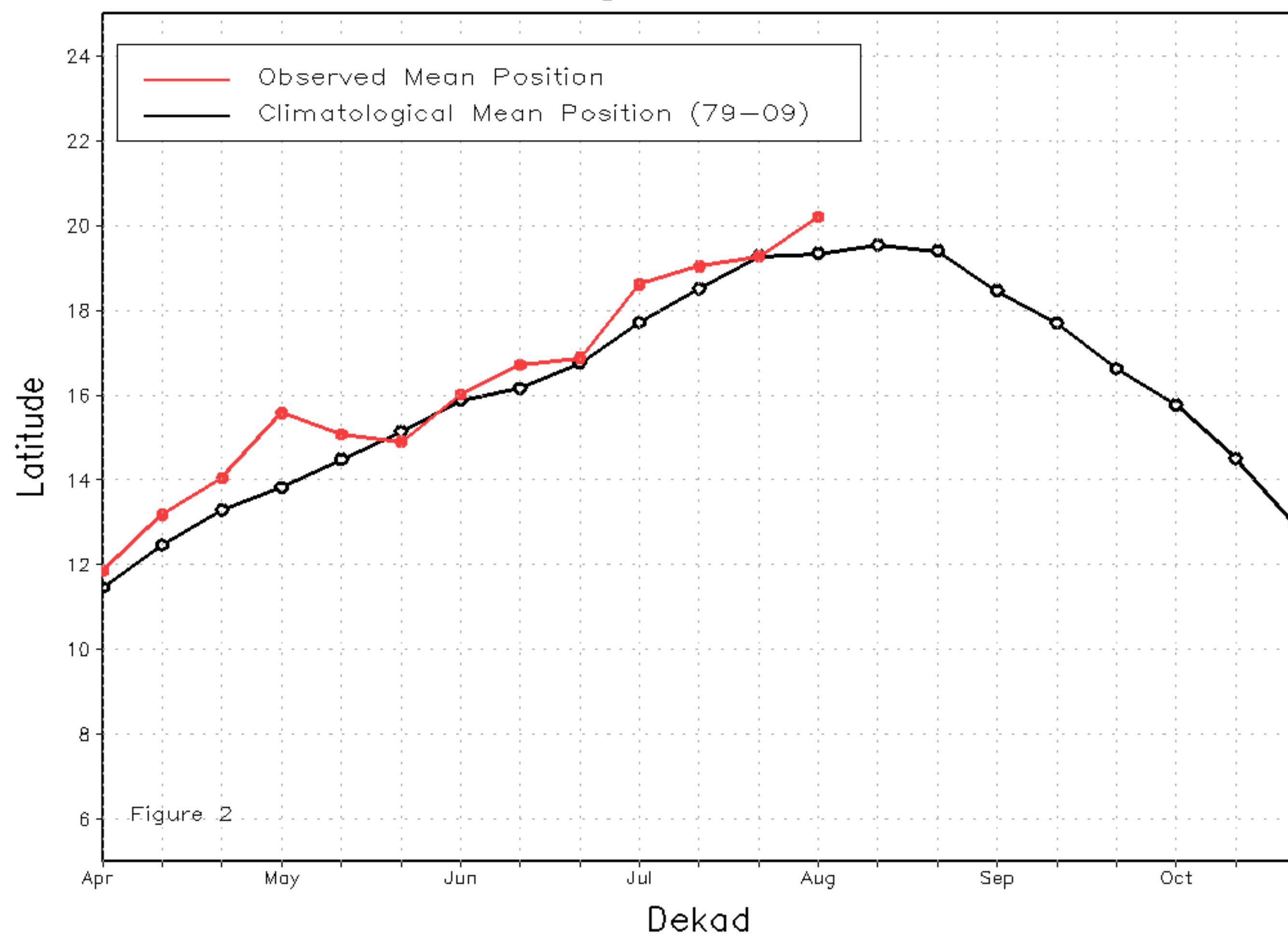
Discussion:

During the first dekad in August, the ITF experienced much advancement across the Africa Sahel compared to previous dekad. In the west (10W to 10E), the average ITF latitude was approximated at 20.3N, which led the normal climatological mean position by nearly 1.0 degree in latitude (19.3) for early August. However, the ITF remained somewhat suppressed in far west (15W to 5W) over parts of Mauritania, and Mali for the second consecutive dekad. The anomalous poleward ITF position in the west was associated with several consecutive days of robust southerly flow and ample moisture across Mali and Niger, leading to increased shower activity over arid southern Algeria. The mean eastern position of the ITF (20E to 35E) was approximated at 18.5N, which also led the climatological mean position by over 1.0 degree latitude (17.2N). The anomalous poleward position in the east brought strong shower activity and localized flooding throughout Sudan. Figure 1 shows the current ITF position relative to its long-term average position during the 1st dekad of August and its previous position during the 3rd dekad of July. Figures 2 and 3 are time series, illustrating the mean latitudinal values of the western and eastern portion of the ITF, respectively, and their evolutions since April, 2014.

Current vs. Normal Dekadal ITF Position
and RFE Accumulated Precipitation (mm)
August 2014, Dekad 1



Mean Western Portion of the ITF: Averaged 10W to 10E
As of: August 2014, Dekad 1



Mean Eastern Portion of the ITF: Averaged 20E to 35E
As of: August 2014, Dekad 1

