



# CPC Africa Desk InterTropical (ITF) Front Analysis

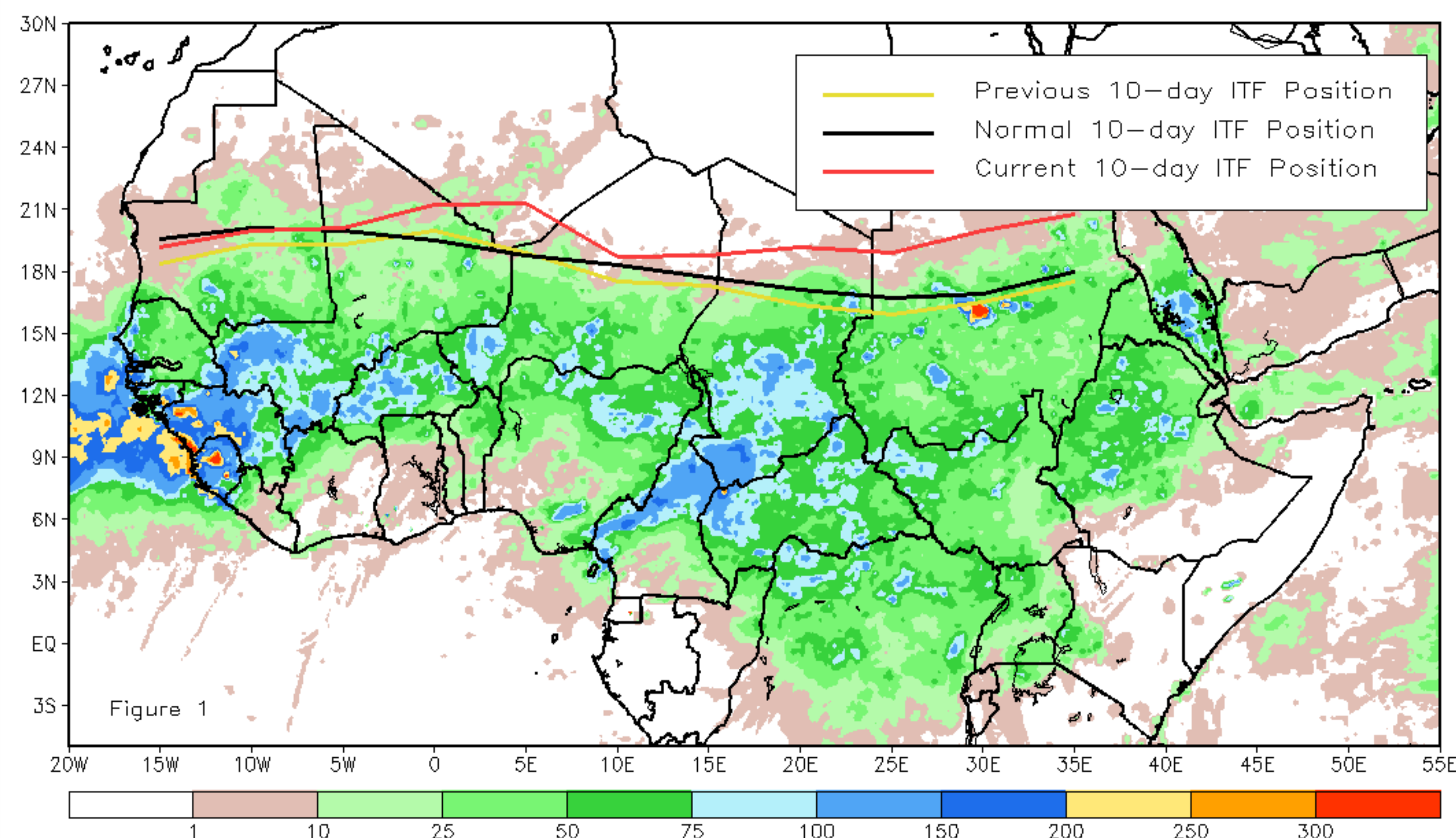
## August 2013, Dekad 1

### Discussion:

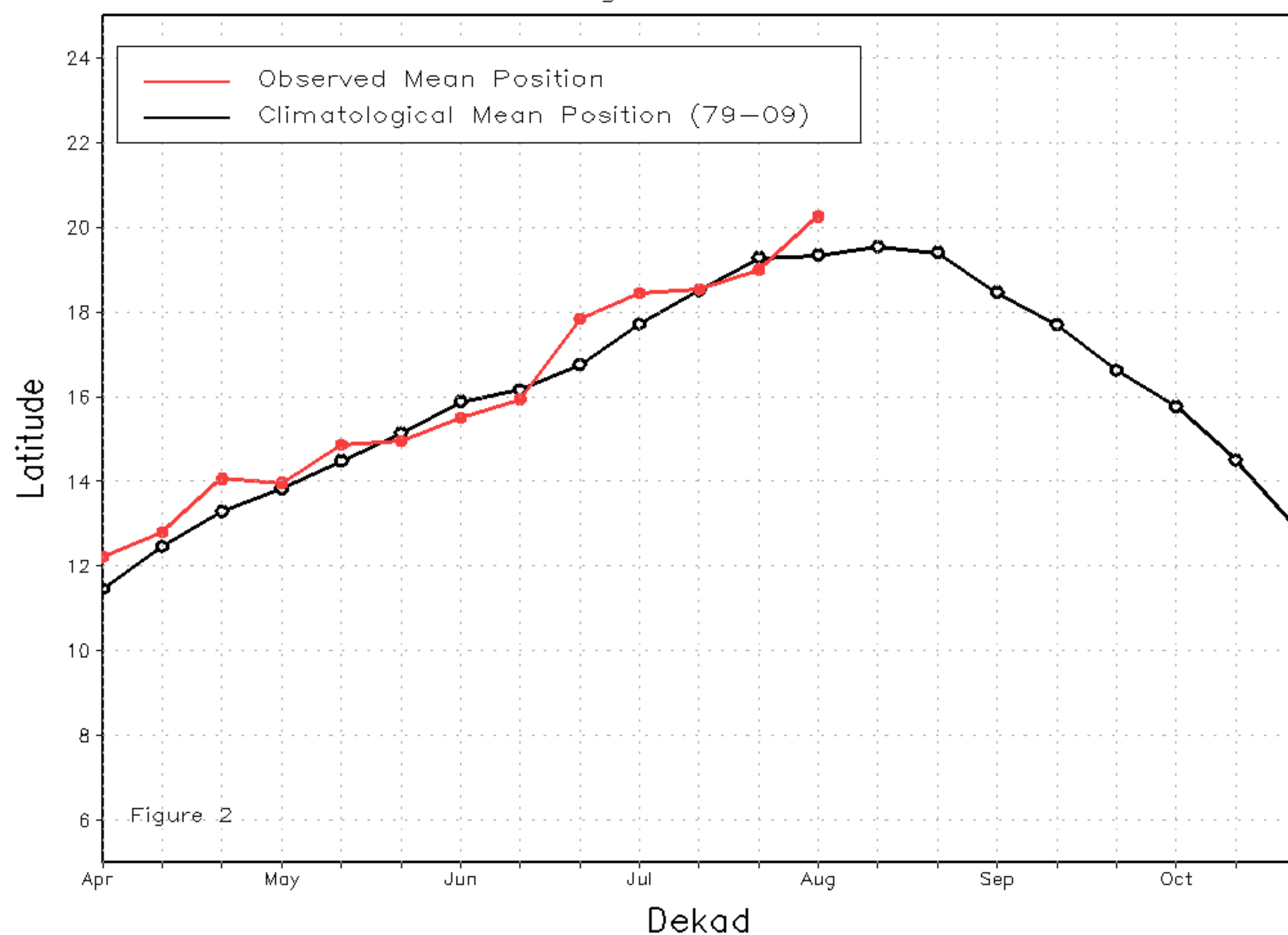
From August 1-10, 2013, the ITF experienced a significant northward advancement across the western and eastern portions of the Sahel. From 10W to 10E, the mean western portion of the ITF was approximated at 20.3 degrees, which was a 1.0 degree above its climatological mean position during early August. The anomalous western mean position was associated with strong moisture advection and anomalous rainfall across parts of Mauritania and Mali. From 20E to 35W, the mean eastern portion of the ITF experienced its highest position for the season, as well as, highest in the last 5 years according to the ITF data record. Its position was approximated at 19.7 degrees, 2.5 degrees above its climatological mean position, and over 3.0 degrees higher than its previous dekadal position during late July. The anomalous position was associated with persistently prevailing southerly winds observed throughout the entire dekad, and significantly heavy rainfall across central Sudan. Figure 1 shows the current ITF position relative to the long-term average position during the first dekad of August and its previous position during the third dekad of July. Figures 2 and 3 are time series, showing the average latitudinal position of the western and eastern portion of the ITF, respectively, and their evolutions since April, 2013.

Current vs. Normal Dekadal ITF Position  
and RFE Accumulated Precipitation (mm)

August 2013, Dekad 1



Mean Western Portion of the ITF: Averaged 10W to 10E  
As of: August 2013, Dekad 1



Mean Eastern Portion of the ITF: Averaged 20E to 35E  
As of: August 2013, Dekad 1

