



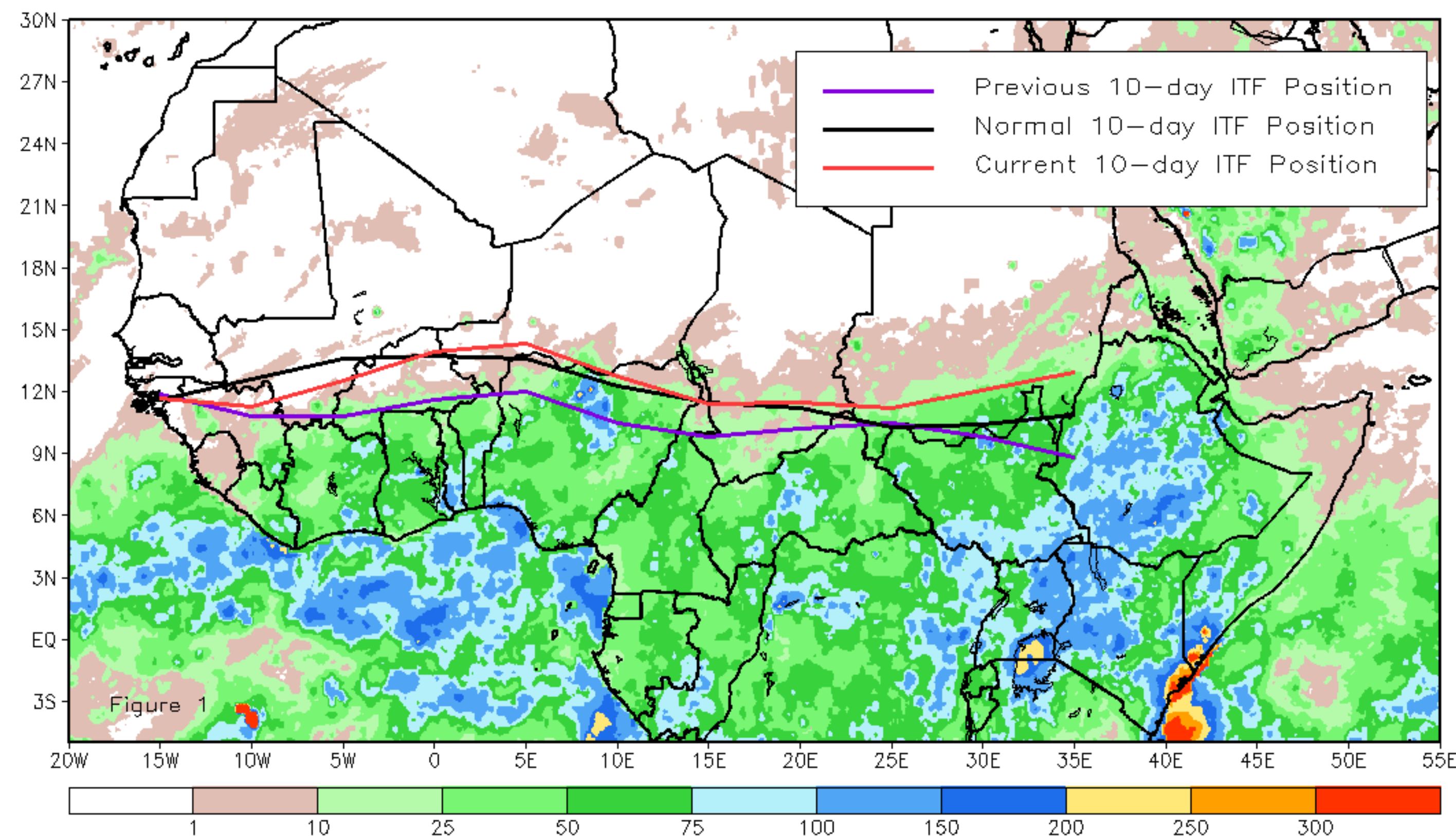
CPC Africa Desk InterTropical (ITF) Front Analysis

April 2023, Dekad 3

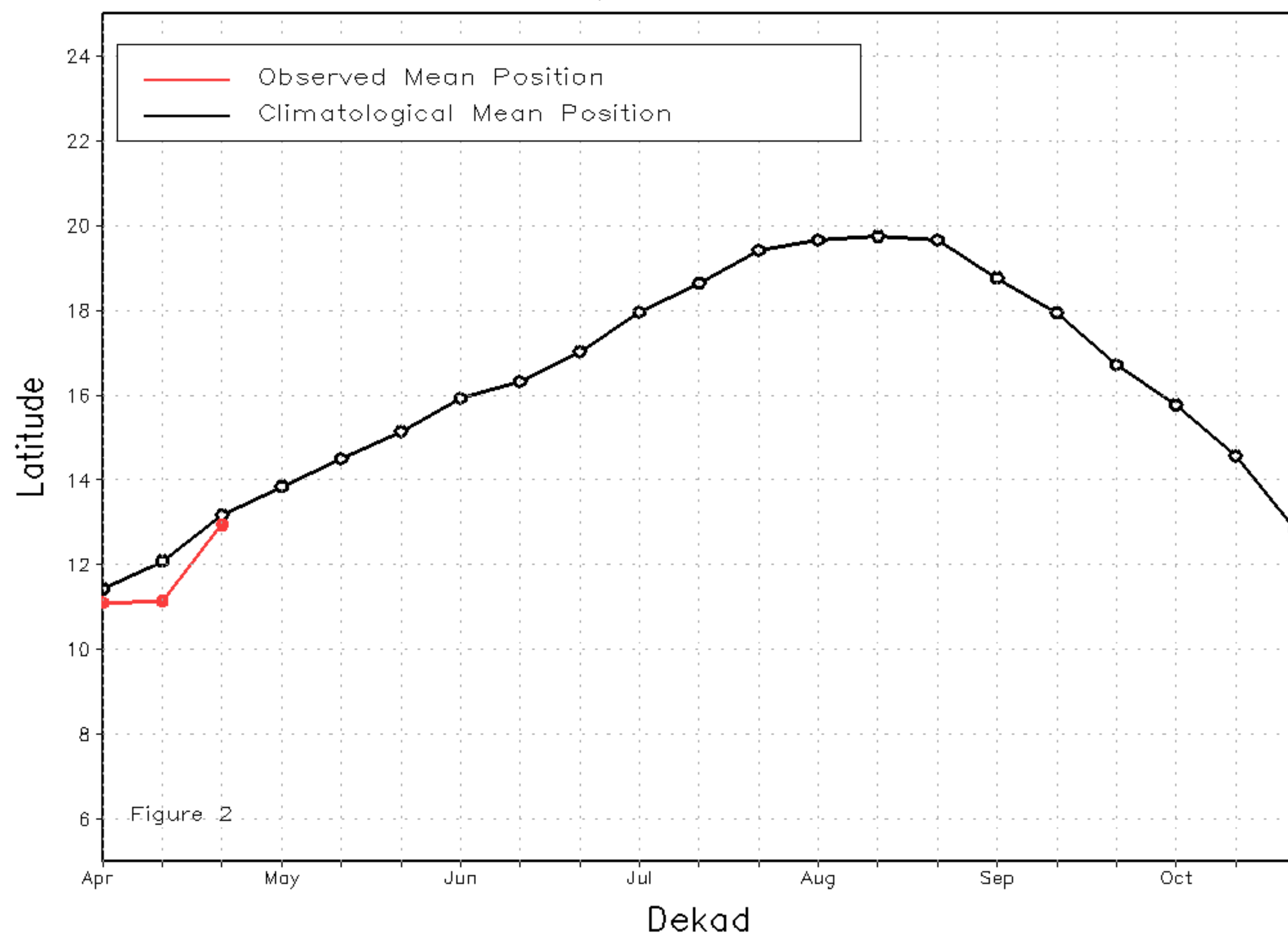
Discussion:

From 21-30 April, the ITF propagated farther north relative to its previous position. However, the ITF lagged slightly behind the long-term average at the western edge, whereas it led the climatology at its eastern counterpart. The western (10W-10E) portion of the ITF was located approximately at 12.9N, which was below the climatological position by 0.3 degree. In contrast, for the eastern (20E-35E) portion, the ITF was approximated at 11.9N, which was above the long-term average position by 1.2 degrees. Figure 1 displays the current position of the ITF relative to the climatological position during the 3rd dekad of April and its previous position during the 2nd dekad of April. Figures 2 and 3 are time series, illustrating the latitudinal positions for the western and eastern portions of the ITF, respectively, and their seasonal evolutions since the beginning of April 2023.

Current vs. Normal Dekadal ITF Position
and RFE Accumulated Precipitation (mm)
April 2023, Dekad 3



Mean Western Portion of the ITF: Averaged 10W to 10E
As of: April 2023, Dekad 3



Mean Eastern Portion of the ITF: Averaged 20E to 35E
As of: April 2023, Dekad 3

