



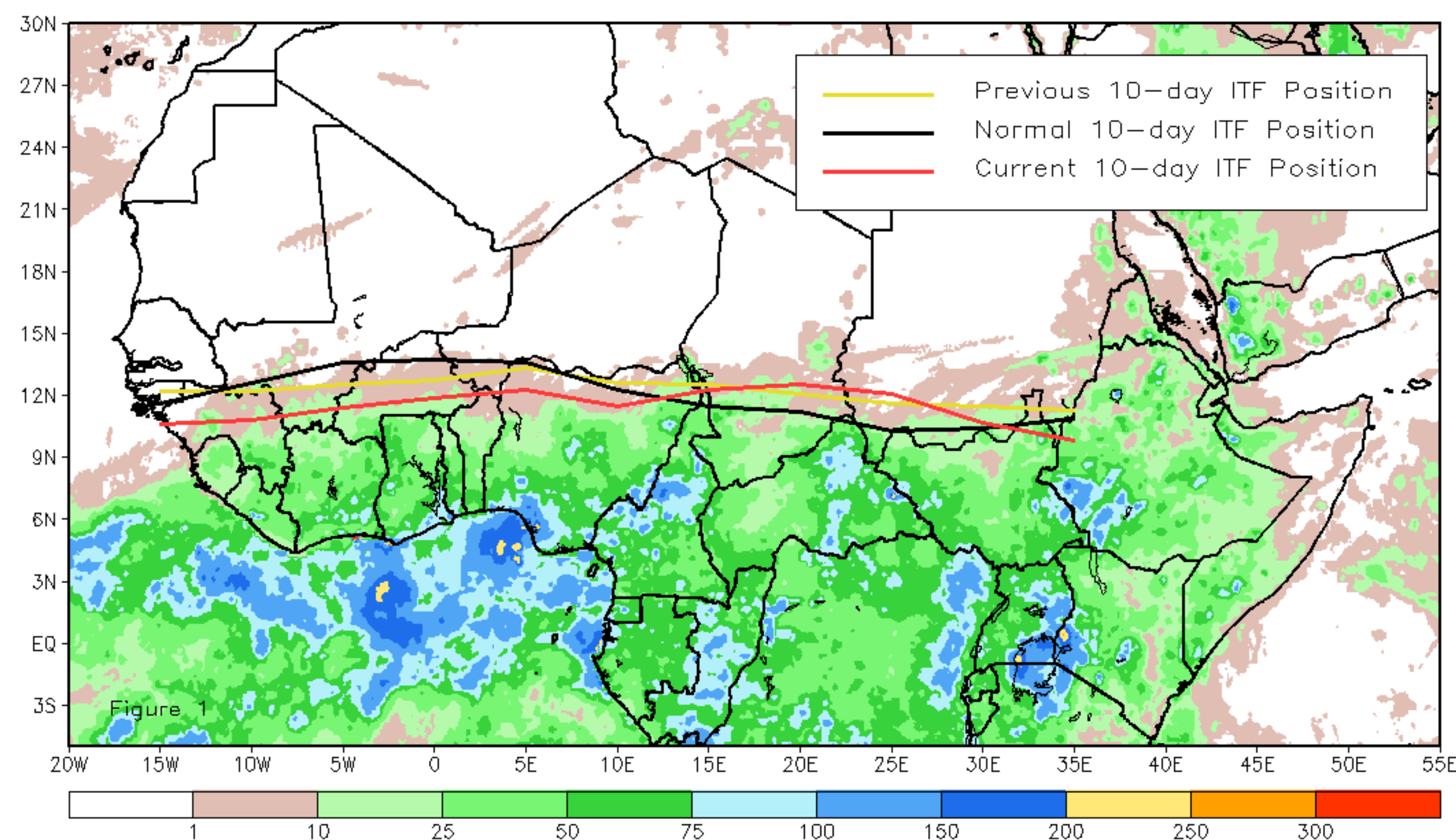
CPC Africa Desk InterTropical (ITF) Front Analysis

April 2022, Dekad 3

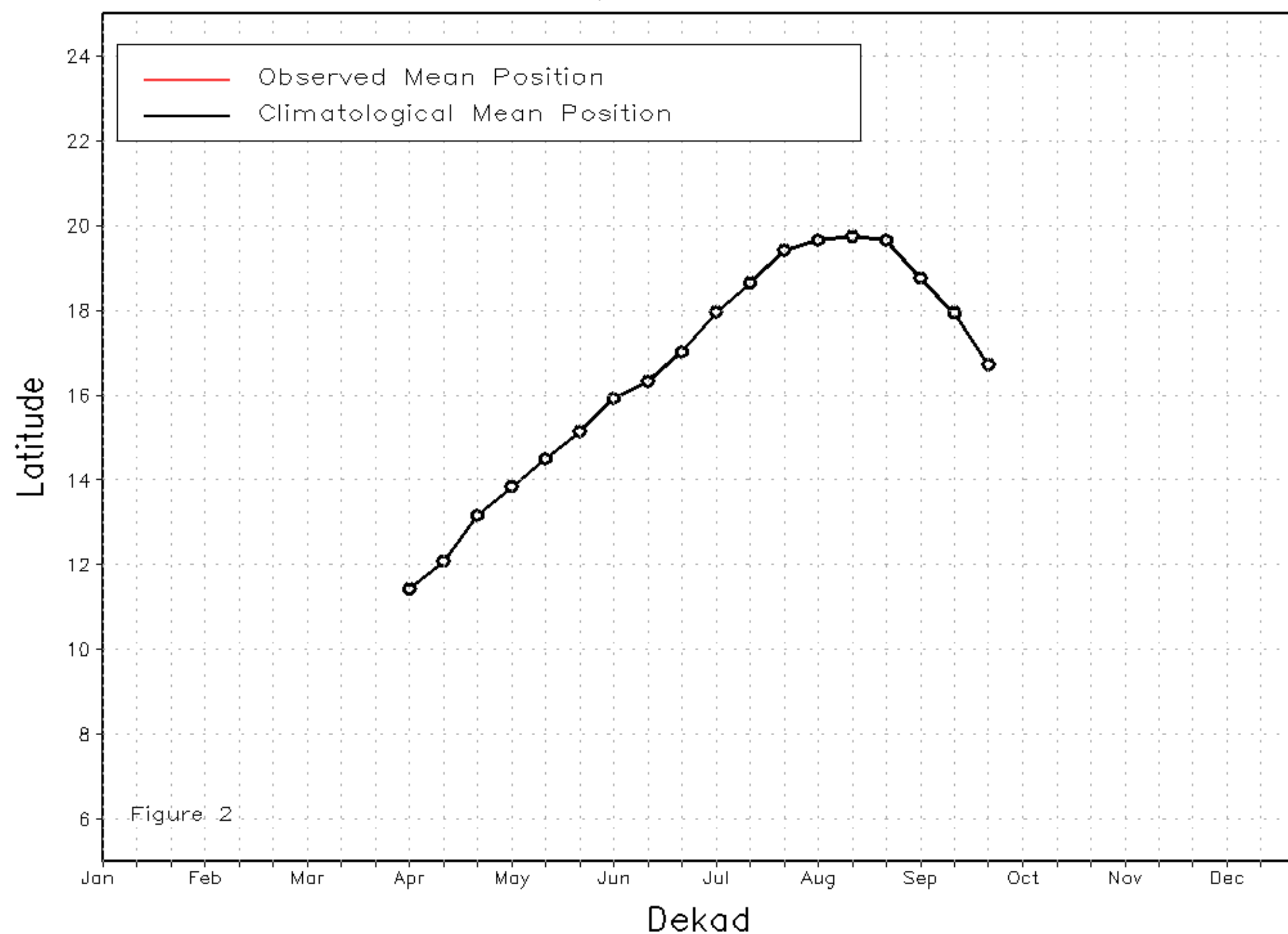
Discussion:

From 21-30 April, the ITF moved south relative to its previous position, which resulted in an overall anomalous southerly position except for the eastern portion (15E-30E). The western (10W-10E) portion of the ITF was located approximately at 11.6N, which is below the climatology position by 1.6 degrees. The eastern (20E-35E) portion of the ITF was approximated at 11.3N, which is above the climatological position by 0.6 degrees. Figure 1 displays the current position of the ITF relative to the long-term average position during the 3rd dekad of April and its previous position during the 2nd dekad of April. Figures 2 and 3 are time series, illustrating the latitudinal values of the western and eastern portions of the ITF, respectively, and their seasonal evolutions since the beginning of April, 2022.

Current vs. Normal Dekadal ITF Position
and RFE Accumulated Precipitation (mm)
April 2022, Dekad 3



Mean Western Portion of the ITF: Averaged 10W to 10E
As of: April 2022, Dekad 3



Mean Eastern Portion of the ITF: Averaged 20E to 35E
As of: April 2022, Dekad 3

