



# CPC Africa Desk InterTropical (ITF) Front Analysis

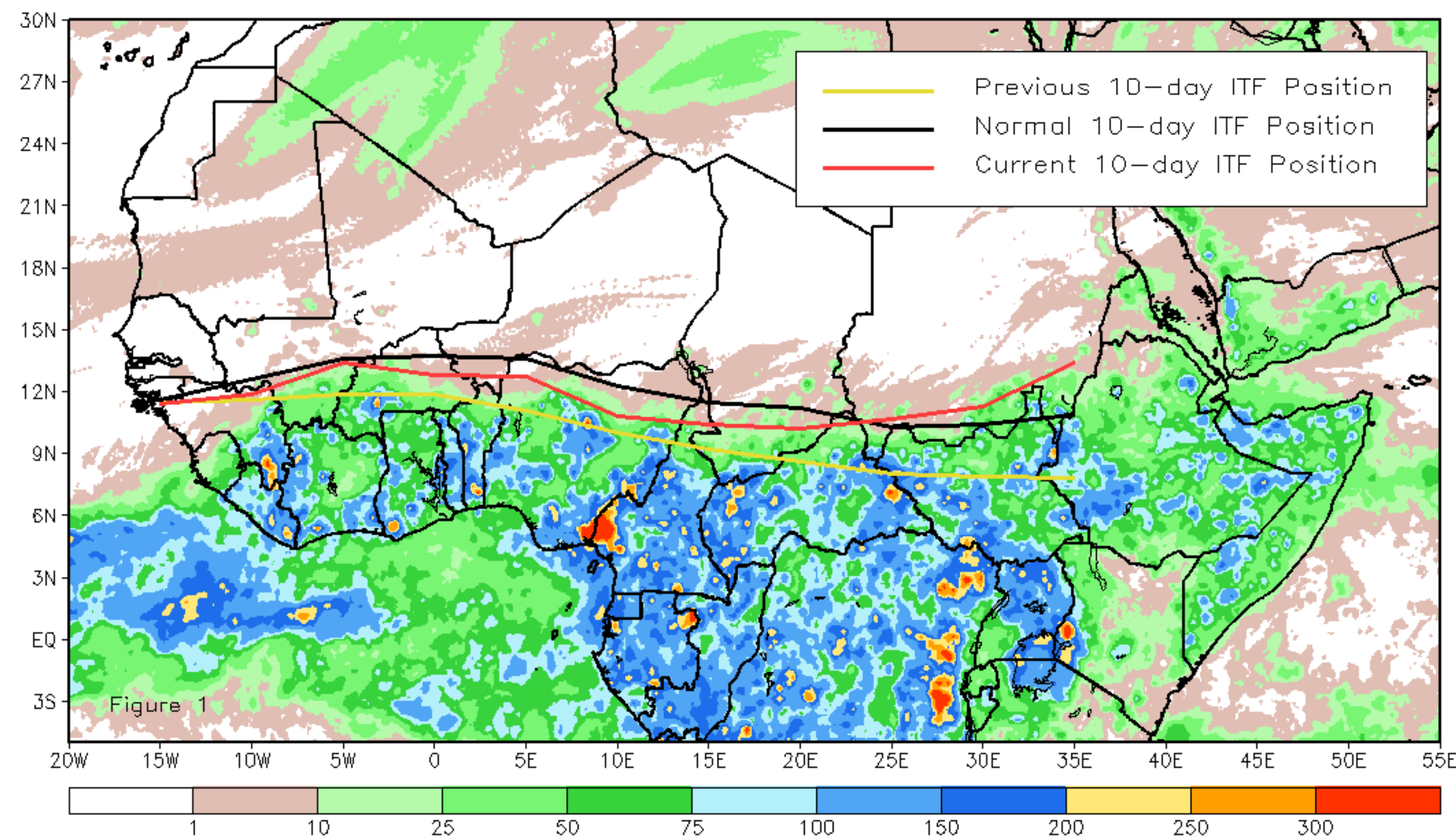
## April 2021, Dekad 3

### Discussion:

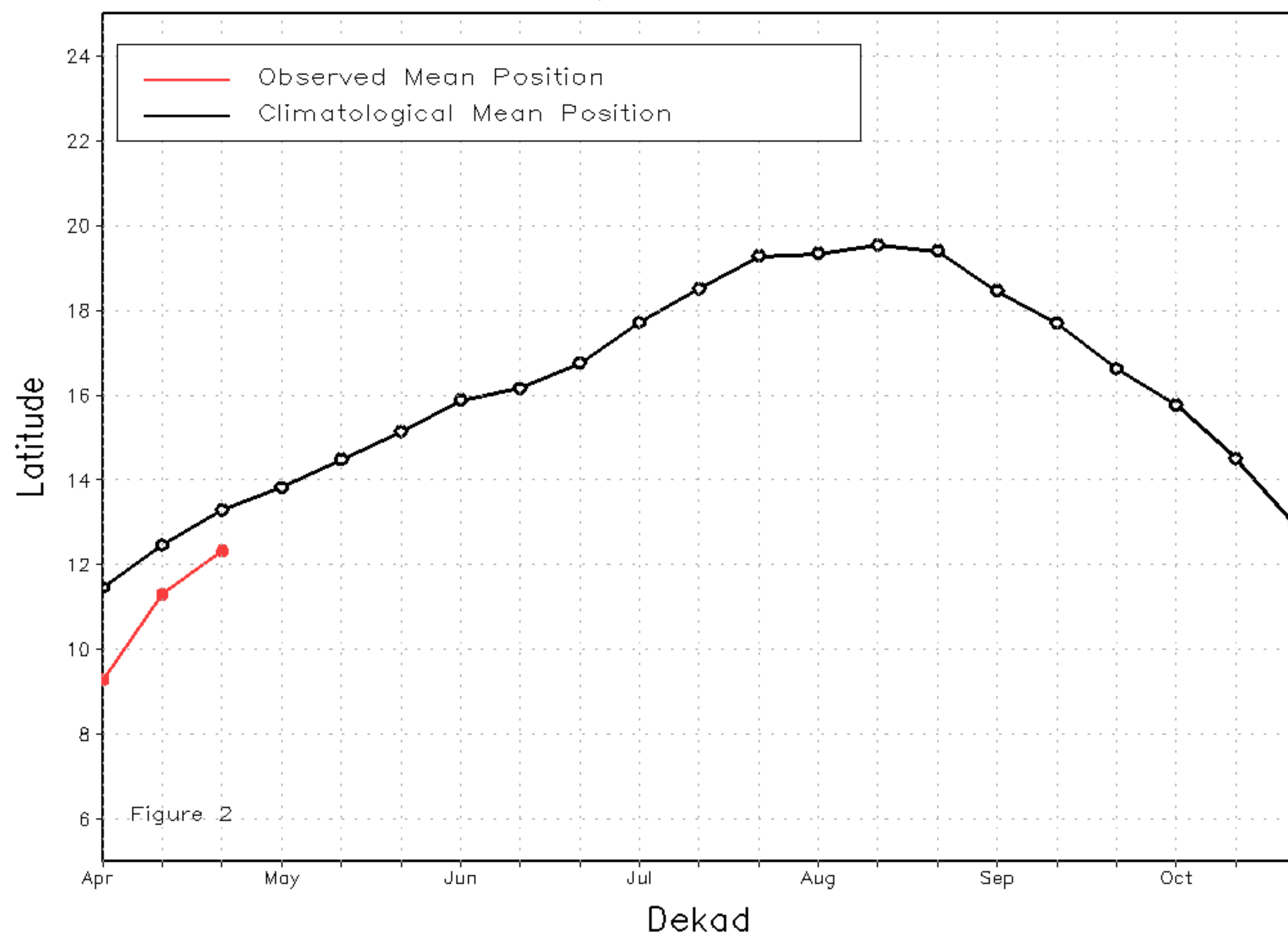
From 21-30 April, the ITF continued its poleward movement across Africa. However, its average position was anomalously south of the climatological position over the western (10W-10E) portion. The mean position was located approximately at 12.3N, which lagged the long-term average position by 0.9 degree. This might have contributed to the observed below-average rainfall over portions of this region during the dekad. In contrast, the ITF was abnormally positioned to the north of the climatological position over the eastern (20E-35E) portion. The mean latitudinal position was averaged at 11.4N, which led the mean position by 0.7 degree and could explain surpluses in rainfall over parts of the Sudans. Figure 1 shows the current position of the ITF relative to the long-term average position during the 3rd dekad of April and its previous position during the 2nd dekad of April. Figures 2 and 3 are time series, illustrating the latitudinal values of the western and eastern portions of the ITF, respectively, and their seasonal evolutions since April, 2021.

Current vs. Normal Dekadal ITF Position  
and RFE Accumulated Precipitation (mm)

April 2021, Dekad 3



Mean Western Portion of the ITF: Averaged 10W to 10E  
As of: April 2021, Dekad 3



Mean Eastern Portion of the ITF: Averaged 20E to 35E  
As of: April 2021, Dekad 3

