



CPC Africa Desk InterTropical (ITF) Front Analysis

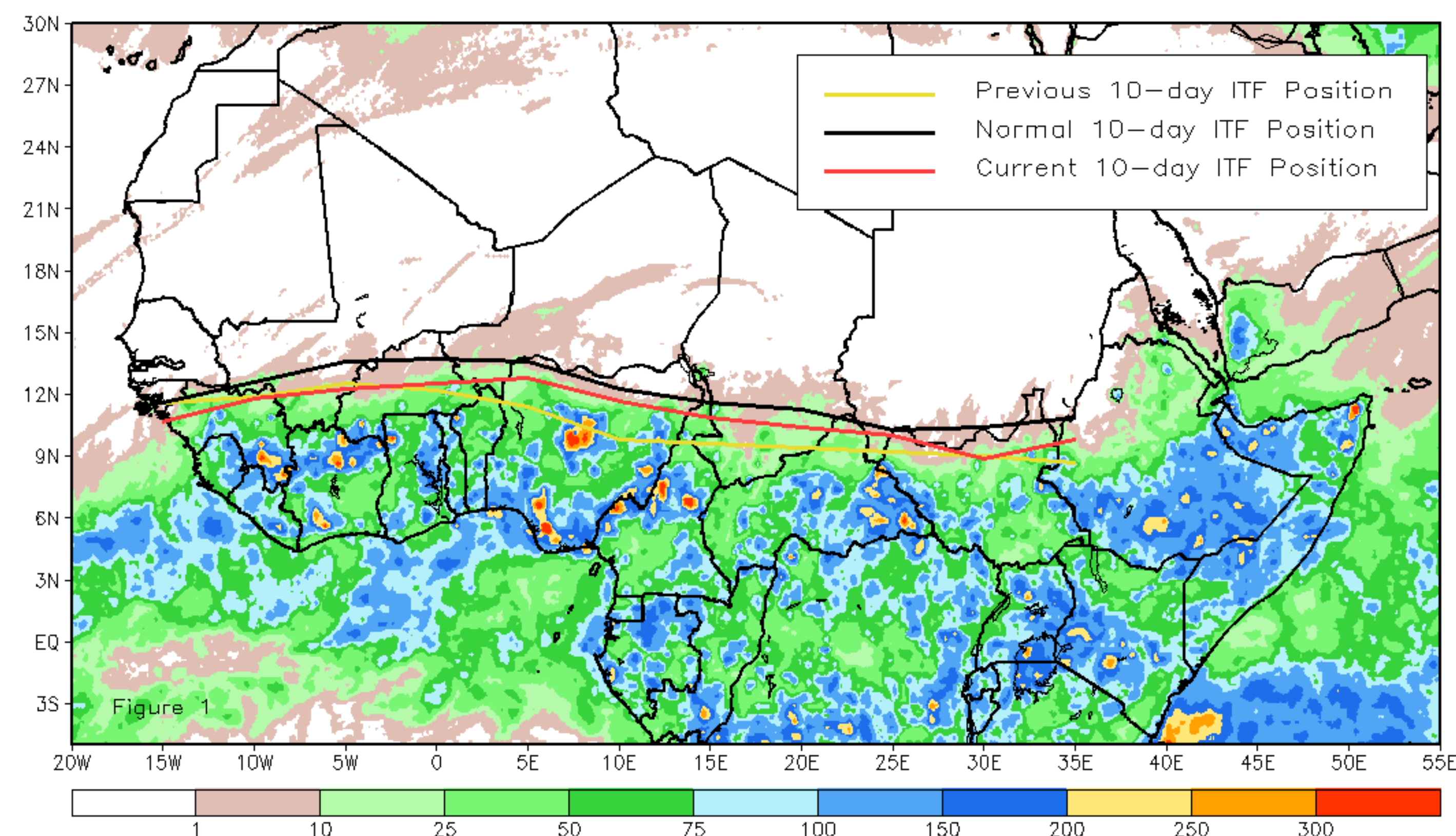
April 2020, Dekad 3

Discussion:

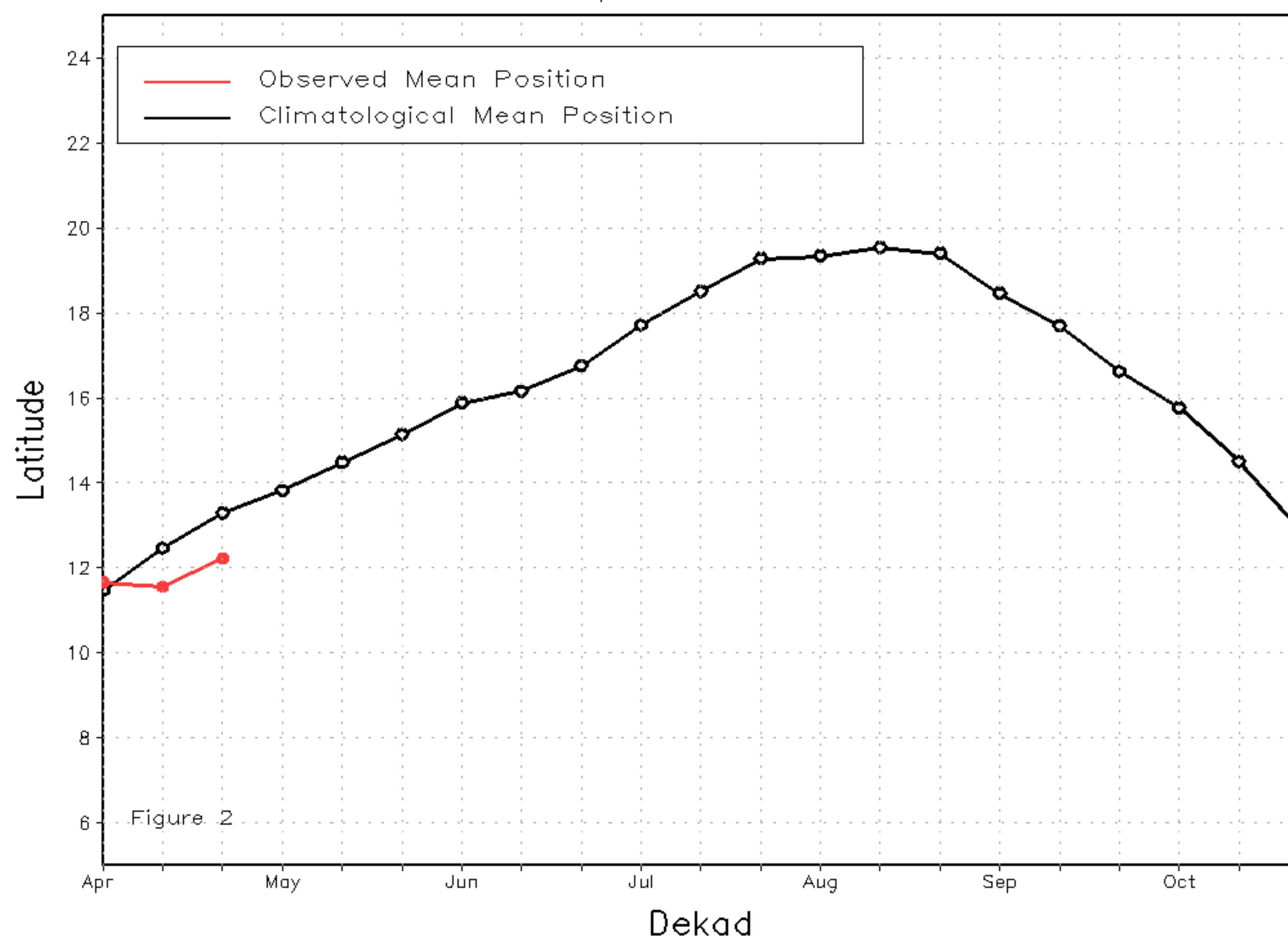
From April 21-30, the ITF advanced slightly to the north, while still remaining to the south of the long-term average position during this time of the year. The mean western (10W-10E) portion of the ITF was located at 12.2N, which was anomalously south of the average position by 1 degree. This may have contributed to the observed limited rainfall over some areas of the Gulf of Guinea. The mean eastern (20E-35E) portion of the ITF was approximated at 9.8N, which was also to the south of the average position by 0.9 degree. This southerly position of the ITF along its eastern portion may have led to the observed little to light rainfall over parts of southern Sudan and South Sudan. Figure 1 displays the current position of the ITF relative to the long-term climatological position during the 3rd dekad of April and its previous position during the 2nd dekad of April. Figures 2 and 3 are time series, illustrating the latitudinal values of the western and eastern portions of the ITF, respectively, and their seasonal evolutions since April, 2020.

Current vs. Normal Dekadal ITF Position
and RFE Accumulated Precipitation (mm)

April 2020, Dekad 3



Mean Western Portion of the ITF: Averaged 10W to 10E
As of: April 2020, Dekad 3



Mean Eastern Portion of the ITF: Averaged 20E to 35E
As of: April 2020, Dekad 3

