



# CPC Africa Desk InterTropical (ITF) Front Analysis

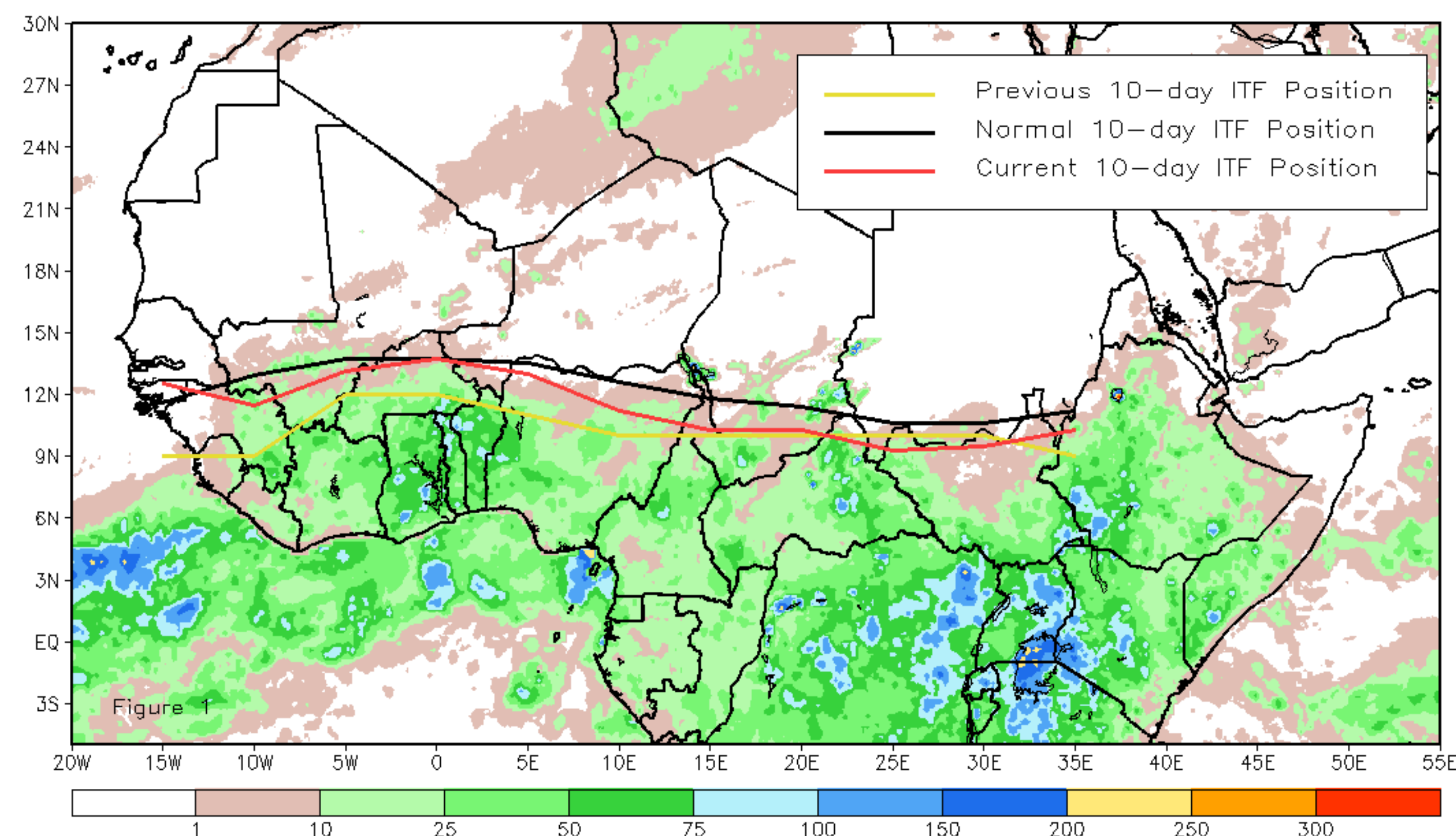
## April 2019, Dekad 3

### Discussion:

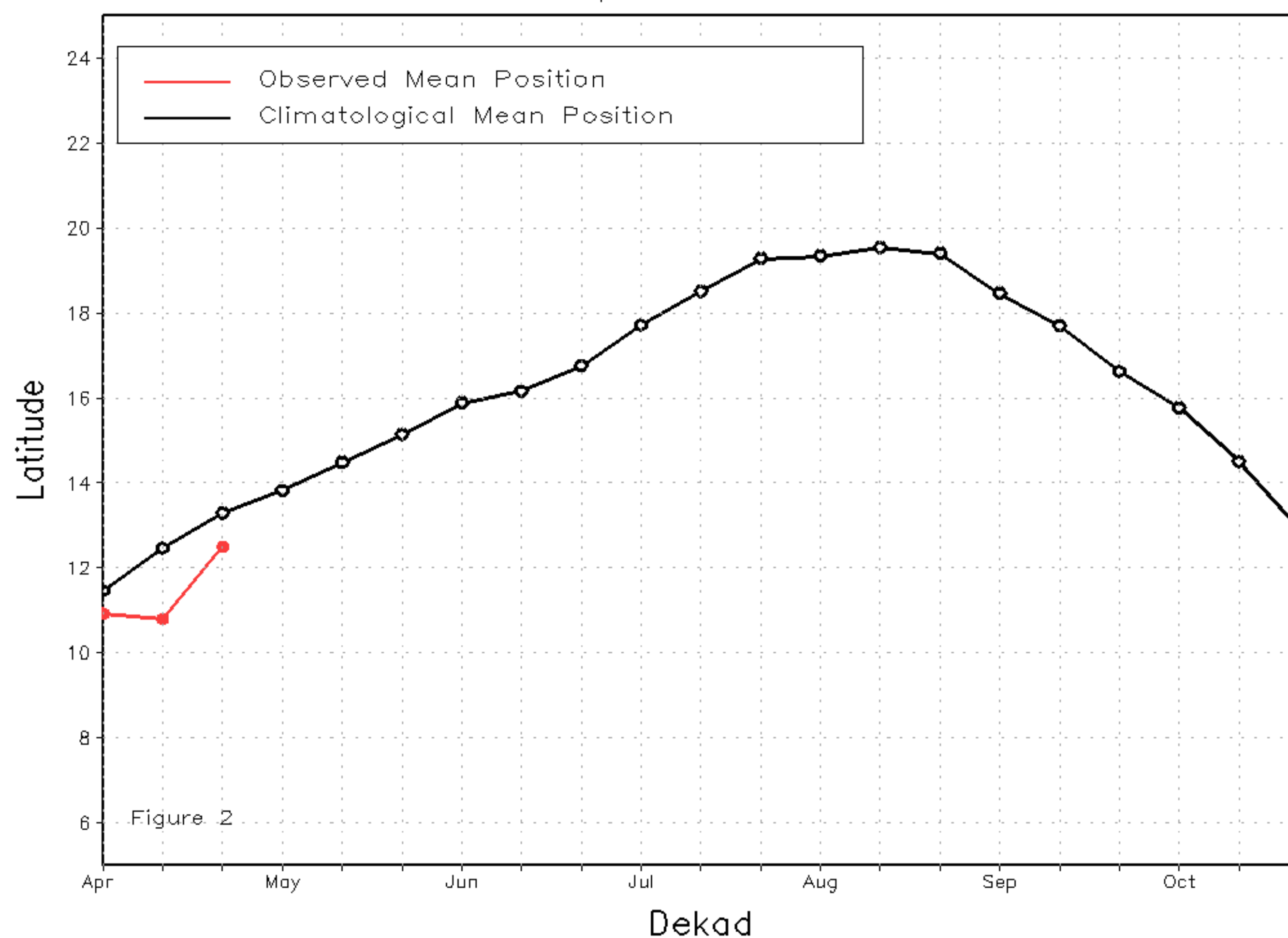
From April 21-30, the ITF advanced quickly northward, residing much closer to its climatological normal position in the west during the third dekad of April. The mean western (10W-10E) portion of the ITF was approximated at 12.5N, farther north than last dekad by nearly 2 degrees latitude. Even so, its location was still south of its climatological mean position of 13.3 degrees. Rainfall generally advanced farther north through the Gulf of Guinea countries along with the ITF. The mean eastern (20E-35E) portion of the ITF was approximated at 9.9N, residing south of its climatological mean position of 10.9N by 1 degree. The southward displacement of the ITF was associated with below-average precipitation across South Sudan. Figure 1 shows the current position of the ITF compared to the climatological position during the 3rd dekad of April and its previous position during the 2nd dekad of April. Figures 2 and 3 are time series, illustrating the latitudinal values of the western and eastern portions of the ITF, respectively, and their seasonal evolutions since April, 2019.

Current vs. Normal Dekadal ITF Position  
and RFE Accumulated Precipitation (mm)

April 2019, Dekad 3



Mean Western Portion of the ITF: Averaged 10W to 10E  
As of: April 2019, Dekad 3



Mean Eastern Portion of the ITF: Averaged 20E to 35E  
As of: April 2019, Dekad 3

