



CPC Africa Desk InterTropical (ITF) Front Analysis

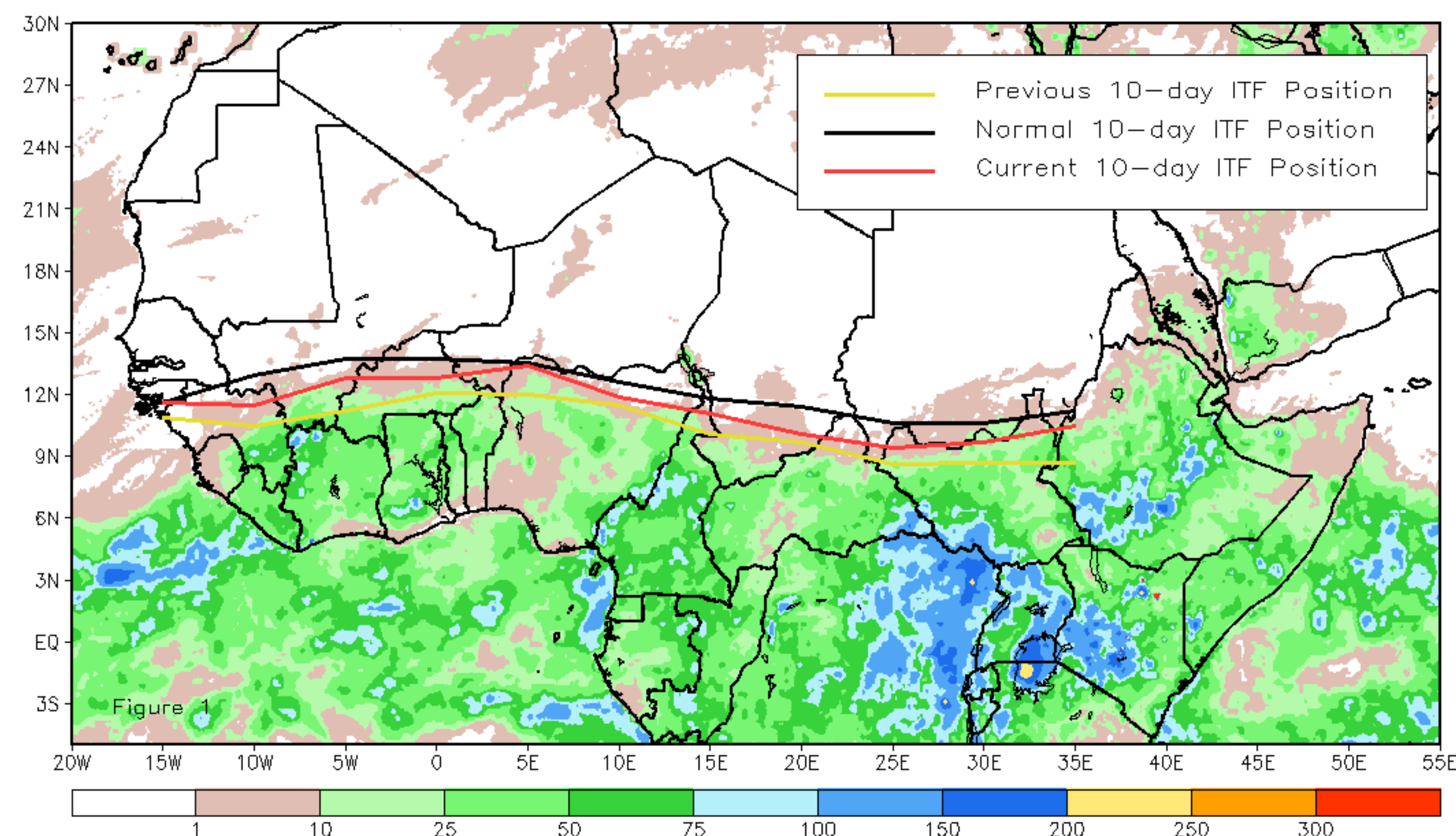
April 2018, Dekad 3

Discussion:

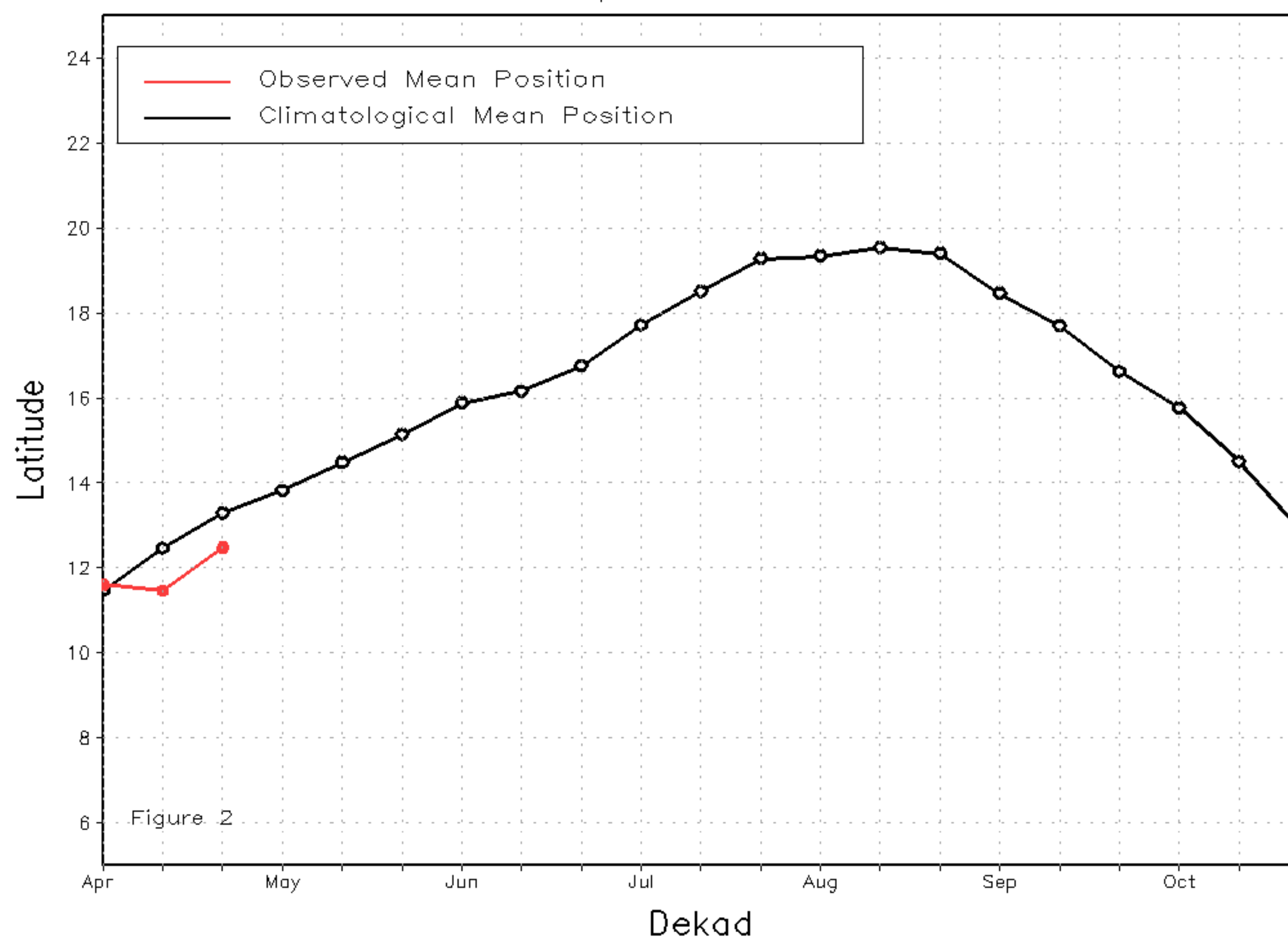
From April 21-30, the ITF continued its northward movement across Africa. However, it remained slightly below the long-term average position during this time of the year. The mean western (10W-10E) portion of the ITF was approximated at 12.5 degrees N, which was below the mean position (13.3N). This anomalous southerly position of the ITF was attributable to less vigorous southerly, resulting in below-average rainfall over the Gulf of Guinea countries. The mean eastern (20E-35E) portion of the ITF was approximated at 9.9 degrees N and also was below the climatological position (10.9N) during the period. The northward advancement of the ITF relative to its position during the previous dekad (10-day period), however, brought above-average rainfall over South Sudan. Figure 1 shows the current position of the ITF relative to its mean climatological position during the 3rd dekad of April and its previous position during the 2nd dekad of April. Figures 2 and 3 are time series, illustrating the mean latitudinal values of the western and eastern portion of the ITF, respectively, and their seasonal evolutions compared to climatology since April, 2018.

Current vs. Normal Dekadal ITF Position
and RFE Accumulated Precipitation (mm)

April 2018, Dekad 3



Mean Western Portion of the ITF: Averaged 10W to 10E
As of: April 2018, Dekad 3



Mean Eastern Portion of the ITF: Averaged 20E to 35E
As of: April 2018, Dekad 3

