



CPC Africa Desk InterTropical (ITF) Front Analysis

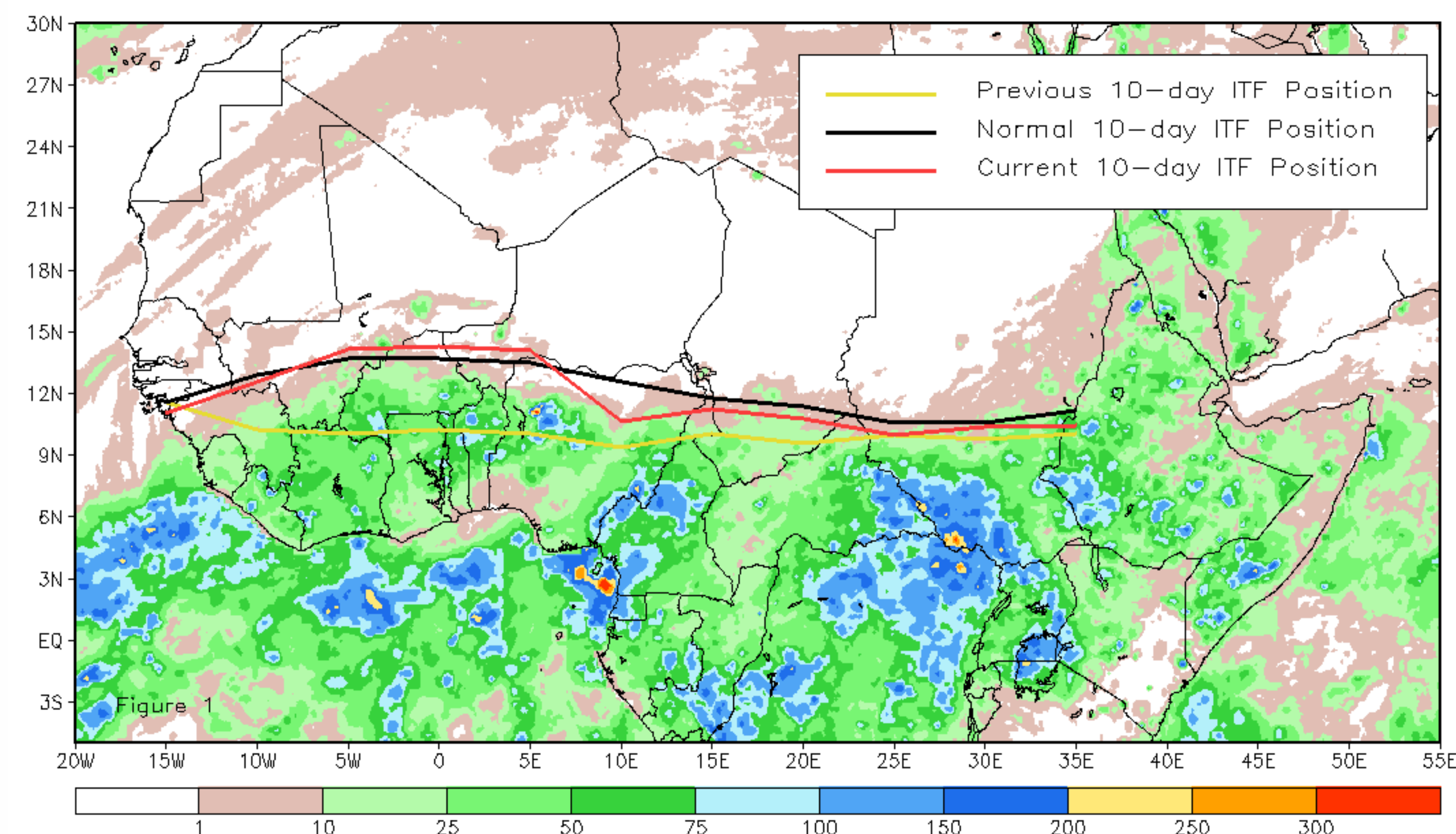
April 2017, Dekad 3

Discussion:

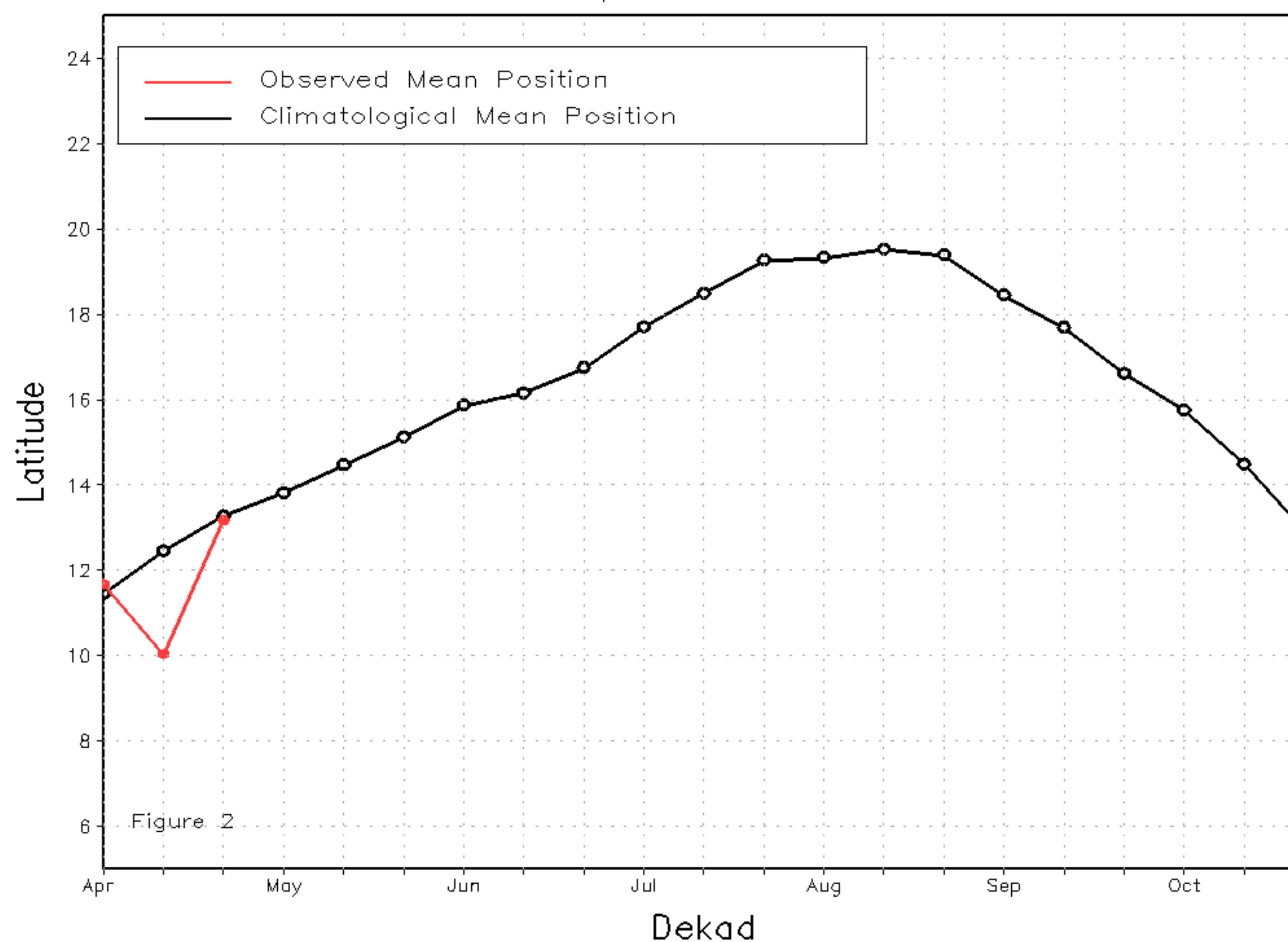
During the third dekad of April (April 21-30), the ITF experienced a significant northward push towards its climatological normal across many Gulf of Guinea countries, while maintaining a near-normal position across eastern Africa. The mean western portion of the ITF (10W-10E) was approximated at 13.2N, falling just below the climatological normal position (13.3N) for the end of April, significantly north of its previous mean position (10.0). Dry, northerly winds in the west were largely mitigated by the ITF advancement leading to more normal rainfall in Burkina Faso, Ghana, Togo, and Benin. The mean eastern portion of the ITF (20E-35E) was approximated at 10.4N, half a degree south of its normal climatological position during the 3rd dekad of April. Figures 2 and 3 are time series illustrating the mean latitudinal values of the western and eastern portions of the ITF, respectively, and their seasonal evolutions since the start of April, 2017.

Current vs. Normal Dekadal ITF Position
and RFE Accumulated Precipitation (mm)

April 2017, Dekad 3



Mean Western Portion of the ITF: Averaged 10W to 10E
As of: April 2017, Dekad 3



Mean Eastern Portion of the ITF: Averaged 20E to 35E
As of: April 2017, Dekad 3

