

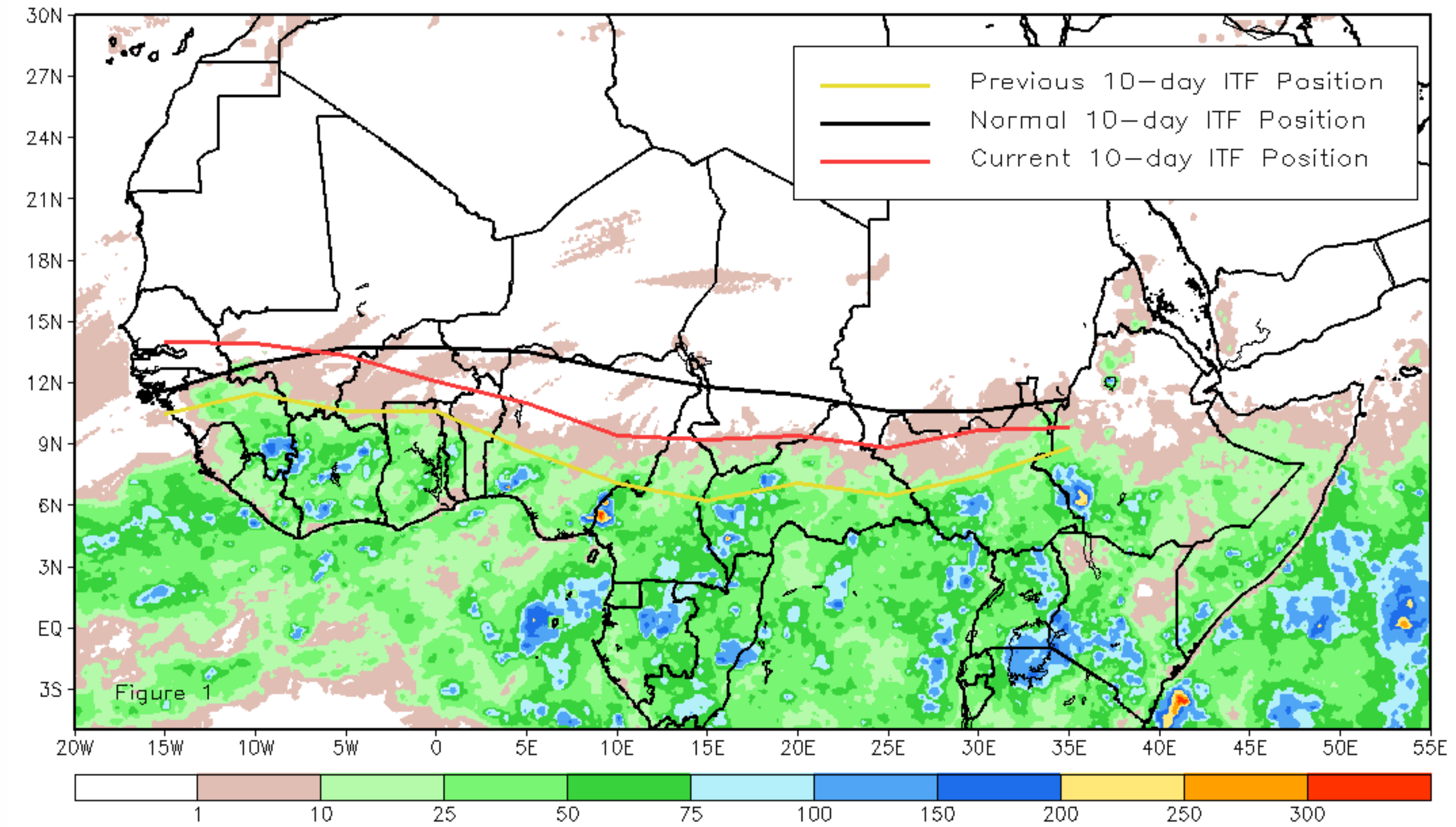


# CPC Africa Desk InterTropical (ITF) Front Analysis April 2015, Dekad 3

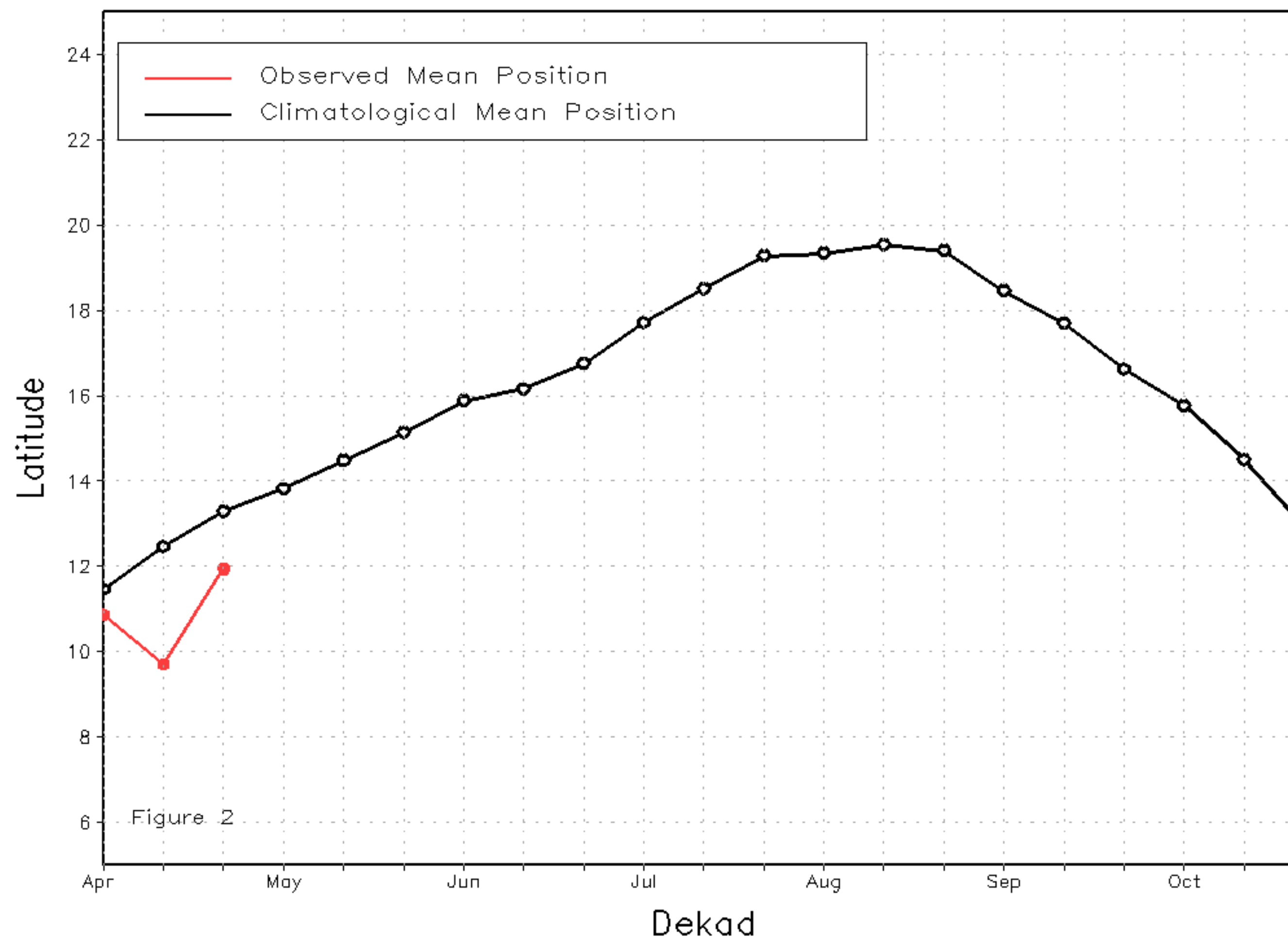
## Discussion:

During the 3rd dekad of April, the ITF position remained well below average for the 2nd consecutive dekad throughout many regions in western and eastern Africa. The western averaged latitudinal position of the ITF (10W - 10E) was approximated at 11.9 degrees North, lagging behind the climatological normal position (13.3N) by nearly 1.5 degrees, although a marked improvement was observed in the far west over Senegal and western Mauritania compared to the previous dekad. Similarly, the mean eastern portion of the ITF was well below average and approximated at 9.4N. Despite a considerable poleward jump in late April compared to the middle of April, the mean eastern position of the ITF is still lagging behind the normal position by 1.5 degrees, and 3.5 degrees compared to its position during this time last year (12.9). Figure 1 shows the current position of the ITF relative to its climatological position during the third dekad of April and its previous position during the second dekad of April. Figures 2 and 3 are time series, illustrating the mean latitudinal values of the western and eastern portion of the ITF, respectively, and their evolutions since April, 2015.

Current vs. Normal Dekadal ITF Position  
and RFE Accumulated Precipitation (mm)  
April 2015, Dekad 3



Mean Western Portion of the ITF: Averaged 10W to 10E  
As of: April 2015, Dekad 3



Mean Eastern Portion of the ITF: Averaged 20E to 35E  
As of: April 2015, Dekad 3

