



# CPC Africa Desk InterTropical (ITF) Front Analysis

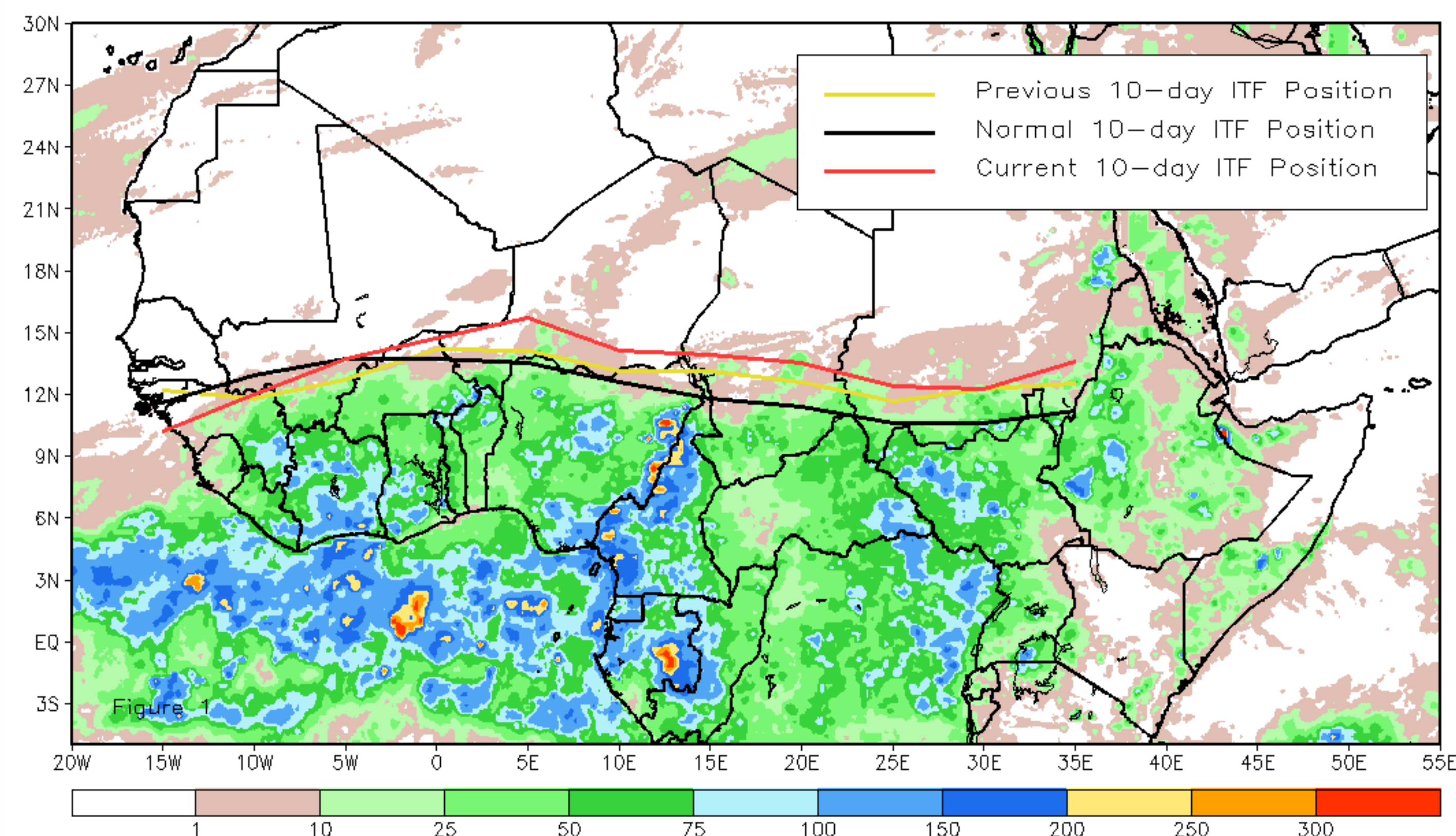
## April 2014, Dekad 3

### Discussion:

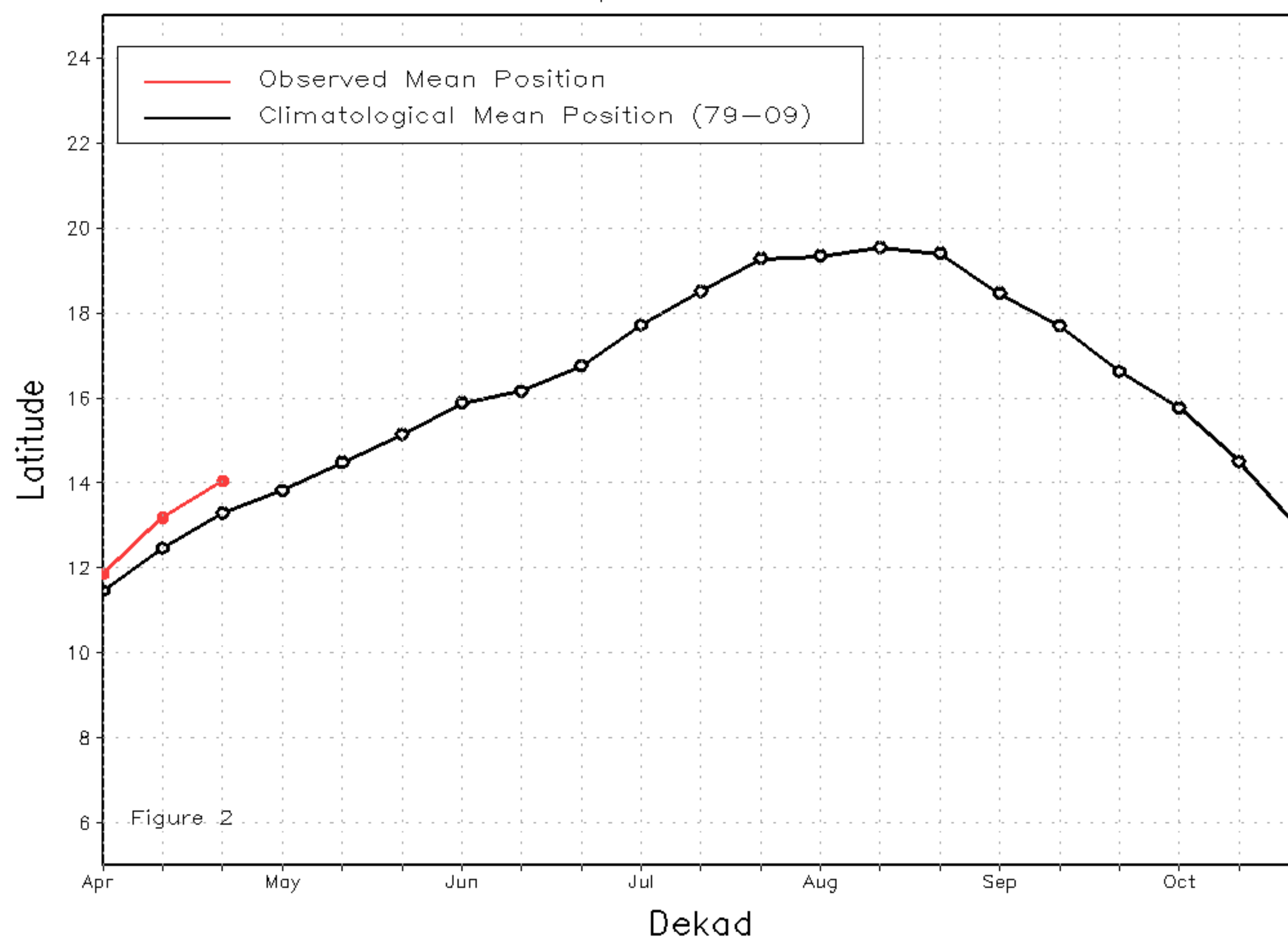
From April 21-30, 2014, the ITF advanced slightly to the North relative to its position during the previous period, but remained anomalously northward of the average position. Due to strong, dry northerly winds, the northward shift of the ITF was decelerated, with its mean western (10W-10E) position located along 14N, which was to the North of the mean position by only 0.7 degree. This, however, brought above-average rainfall along the Gulf of Guinea, including eastern Guinea Conakry and Cote d'Ivoire. On the other hand, the mean eastern (20E-35E) portion of the ITF continued its northward movement and was approximated at 12.9N, which led the average position by 2 degrees. This brought wetness along the Sudan-South Sudan border and parts of western South Sudan. Figure 1 shows the current position of the ITF relative to its long-term average for the third dekad of April and its former position during the second dekad of April. Figures 2 and 3 are time series, illustrating the mean latitudinal values of the western and eastern portion of the ITF, respectively, and their evolutions since April, 2014.

Current vs. Normal Dekadal ITF Position  
and RFE Accumulated Precipitation (mm)

April 2014, Dekad 3



Mean Western Portion of the ITF: Averaged 10W to 10E  
As of: April 2014, Dekad 3



Mean Eastern Portion of the ITF: Averaged 20E to 35E  
As of: April 2014, Dekad 3

