



CPC Africa Desk InterTropical (ITF) Front Analysis

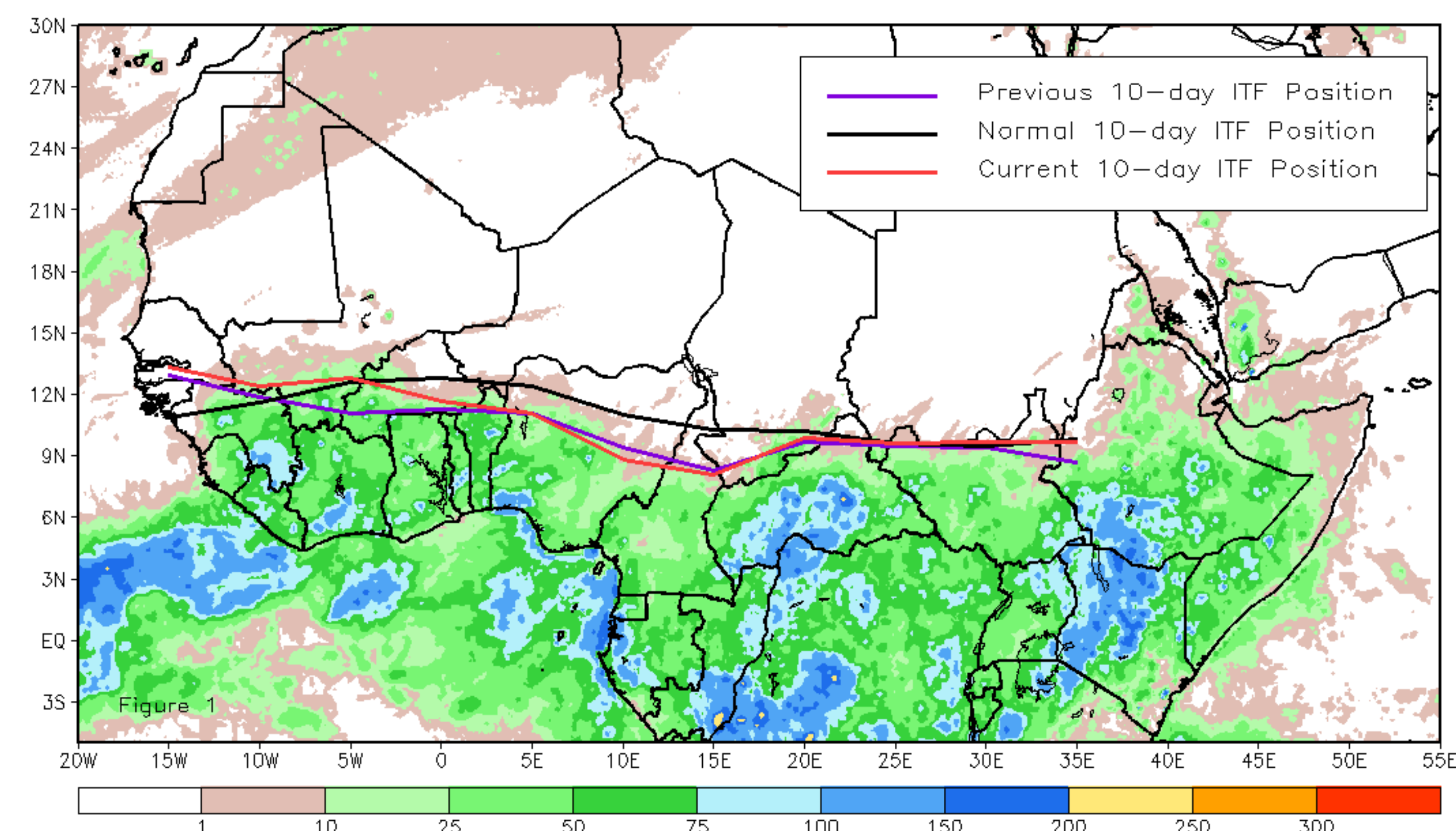
April 2025, Dekad 2

Discussion:

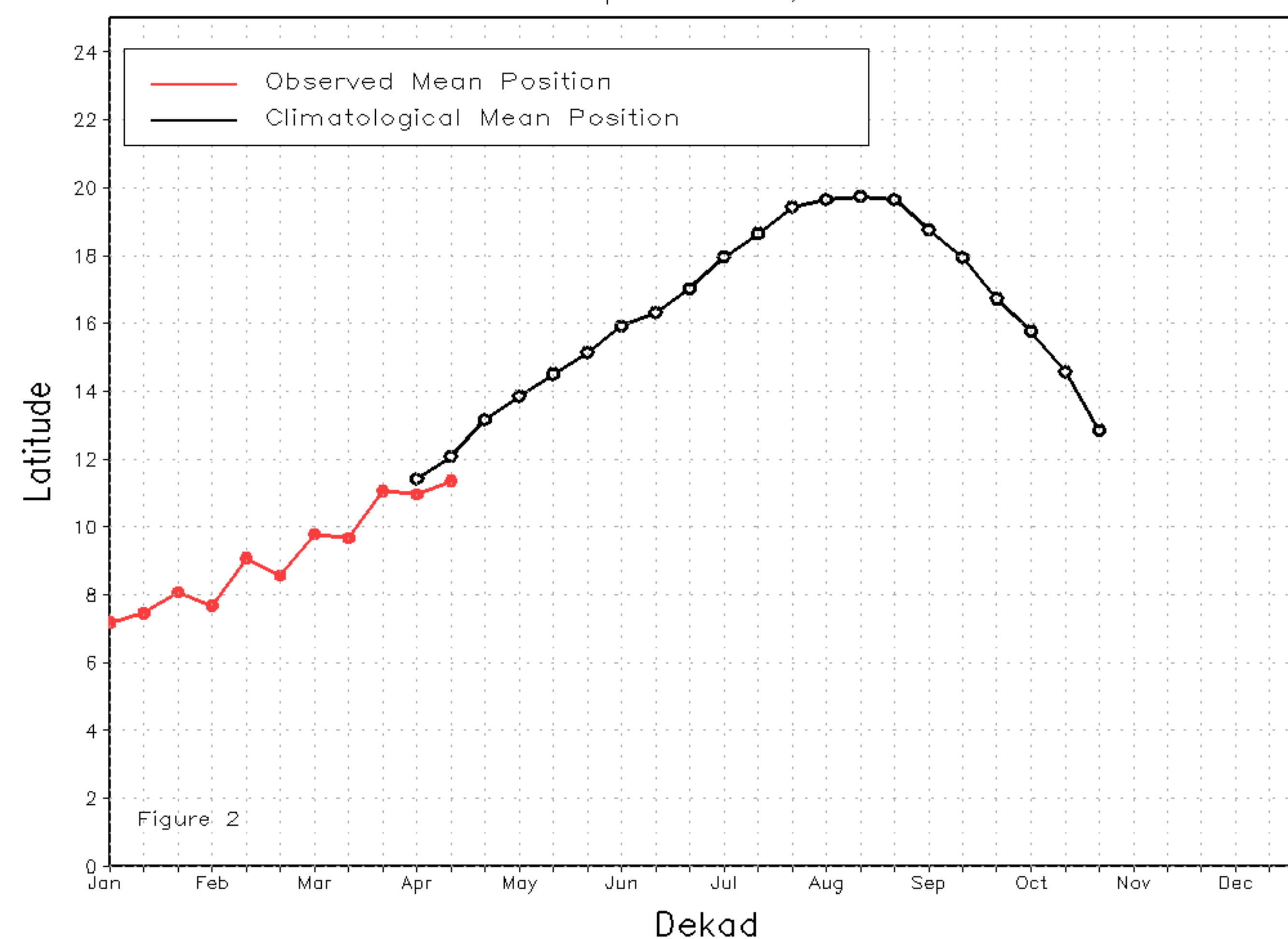
From April 11 to 20, the current Inter-Tropical Front (ITF) moved southward in both the western and eastern portions, except in Senegal, Mali, Burkina Faso, and northeastern South Sudan, where it moved northward compared to its previous position. The western (10W-10E) portion of the ITF was located approximately at 11.4N, which was below the climatological position by 0.7 degrees. In addition, at the eastern (20E-35E) portion, the ITF was approximated at 9.7N, which was below the long-term average position by 0.1 degrees. Figure 1 displays the current position of the ITF during the 2nd dekad of April and its previous position during the 1st dekad of April. Figures 2 and 3 are time series, illustrating the latitudinal positions for the western and eastern portions of the ITF, respectively, and their seasonal evolutions since the beginning of April 2025.

Current vs. Normal Dekadal ITF Position
and RFE Accumulated Precipitation (mm)

April 2025, Dekad 2



Mean Western Portion of the ITF: Averaged 10W to 10E
As of: April 2025, Dekad 2



Mean Eastern Portion of the ITF: Averaged 20E to 35E
As of: April 2025, Dekad 2

