



CPC Africa Desk InterTropical (ITF) Front Analysis

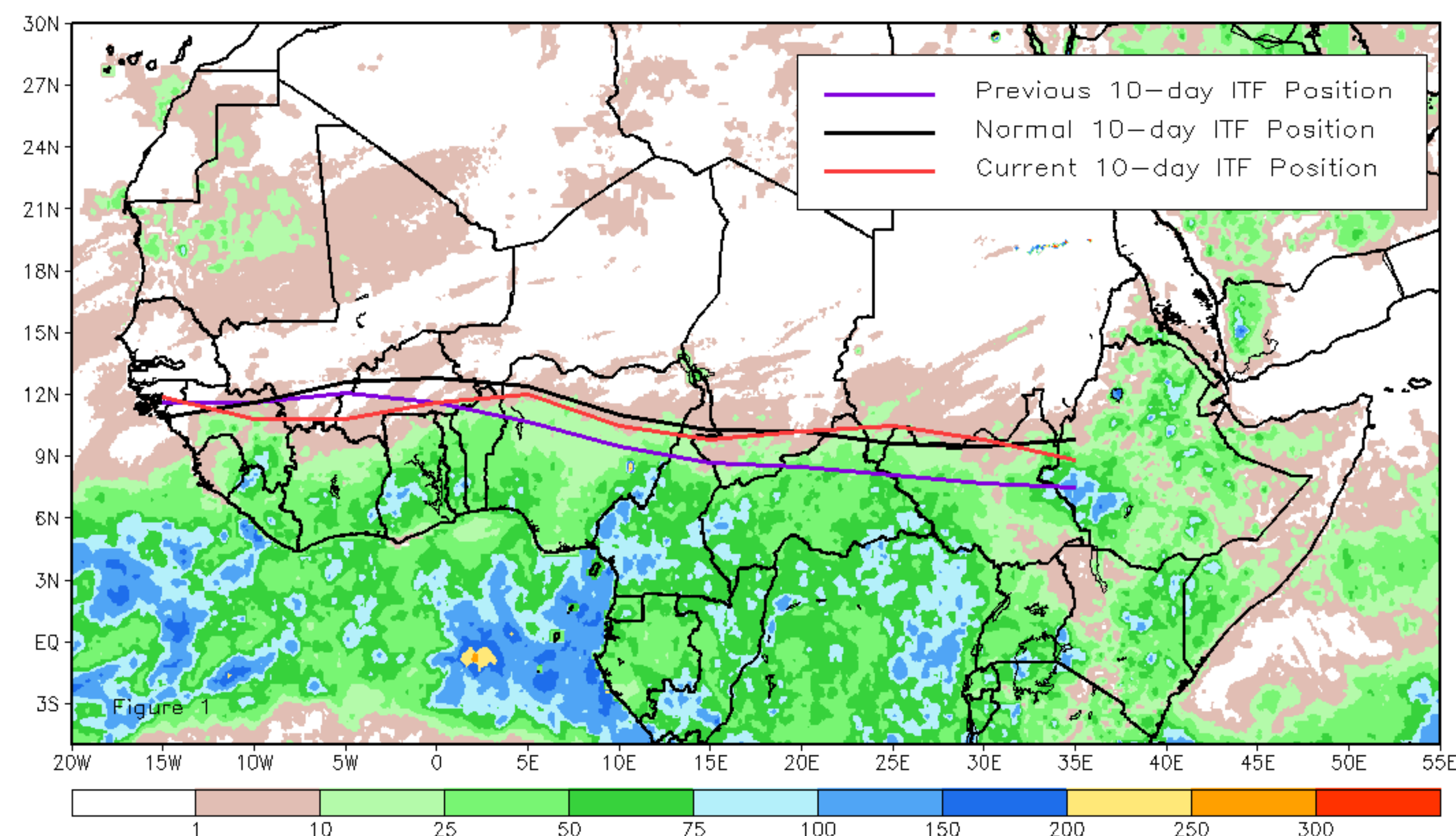
April 2023, Dekad 2

Discussion:

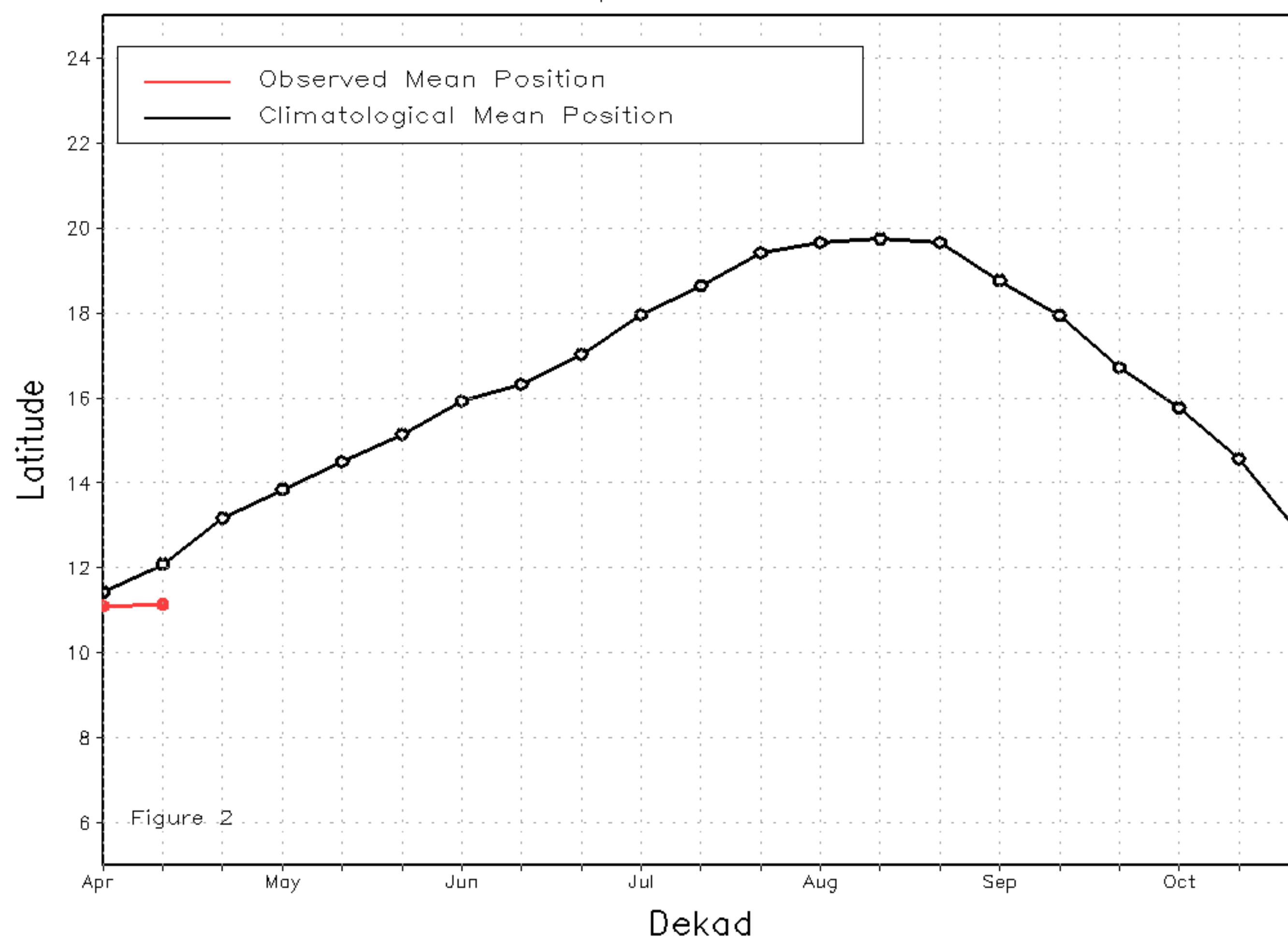
From 11-20 April, the ITF moved north relative to its previous position. Comparing the ITF with climatology, the current ITF had an anomalous southerly position at the western and eastern portions. The western (10W-10E) portion of the ITF was located approximately at 11.1N, below the climatology position by 1.6 degrees. At the eastern (20E-35E) portion, the ITF was approximately 9.8N, below the climatological position by 1.8 degree. Figure 1 displays the current position of the ITF relative to the long-term average position during the 2nd dekad of April and its previous position during the 1st dekad of April. Figures 2 and 3 are time series, illustrating the latitudinal values of the western and eastern portions of the ITF, respectively, and their seasonal evolutions since the beginning of April 2023.

Current vs. Normal Dekadal ITF Position
and RFE Accumulated Precipitation (mm)

April 2023, Dekad 2



Mean Western Portion of the ITF: Averaged 10W to 10E
As of: April 2023, Dekad 2



Mean Eastern Portion of the ITF: Averaged 20E to 35E
As of: April 2023, Dekad 2

