



CPC Africa Desk InterTropical (ITF) Front Analysis

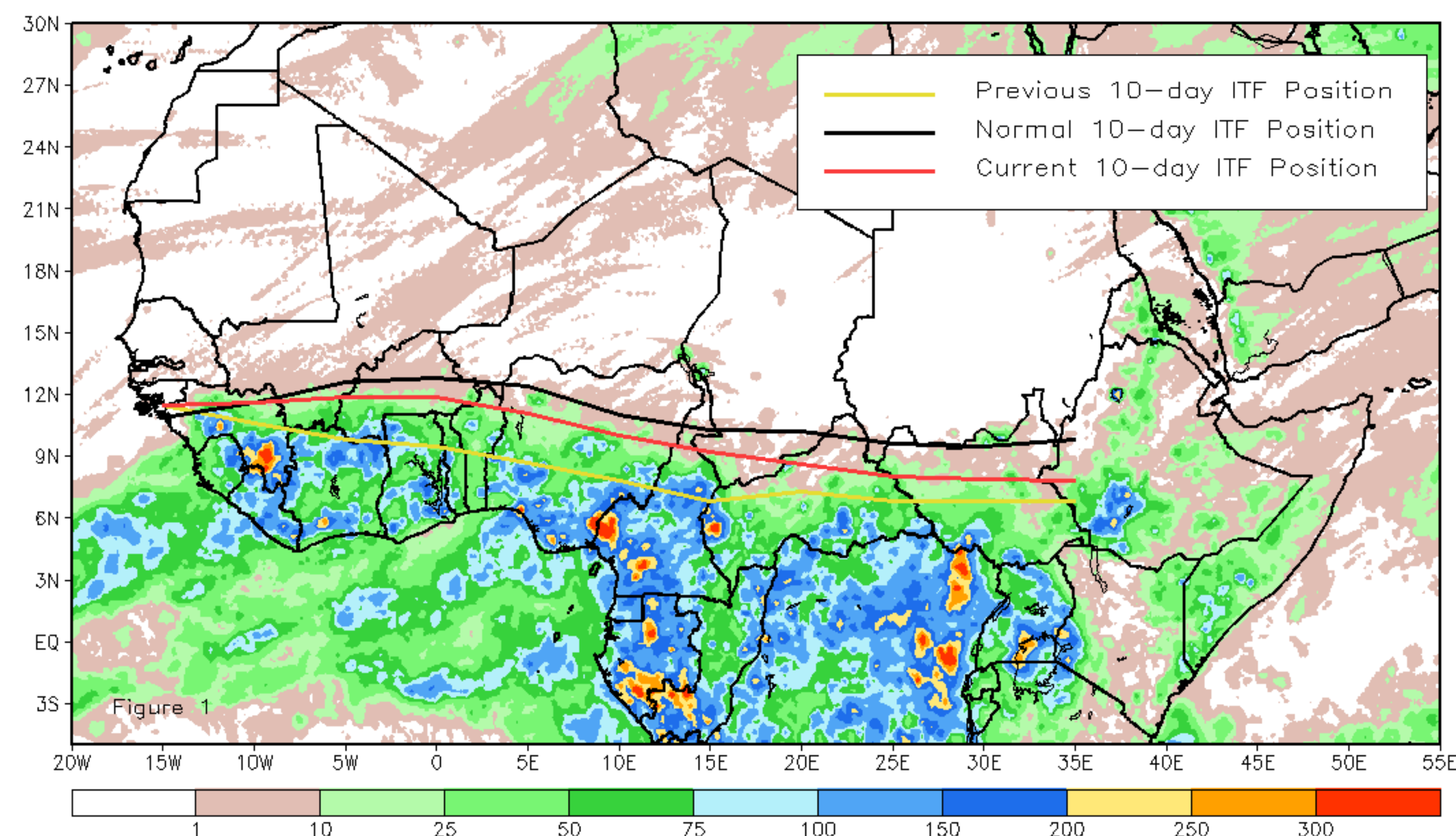
April 2021, Dekad 2

Discussion:

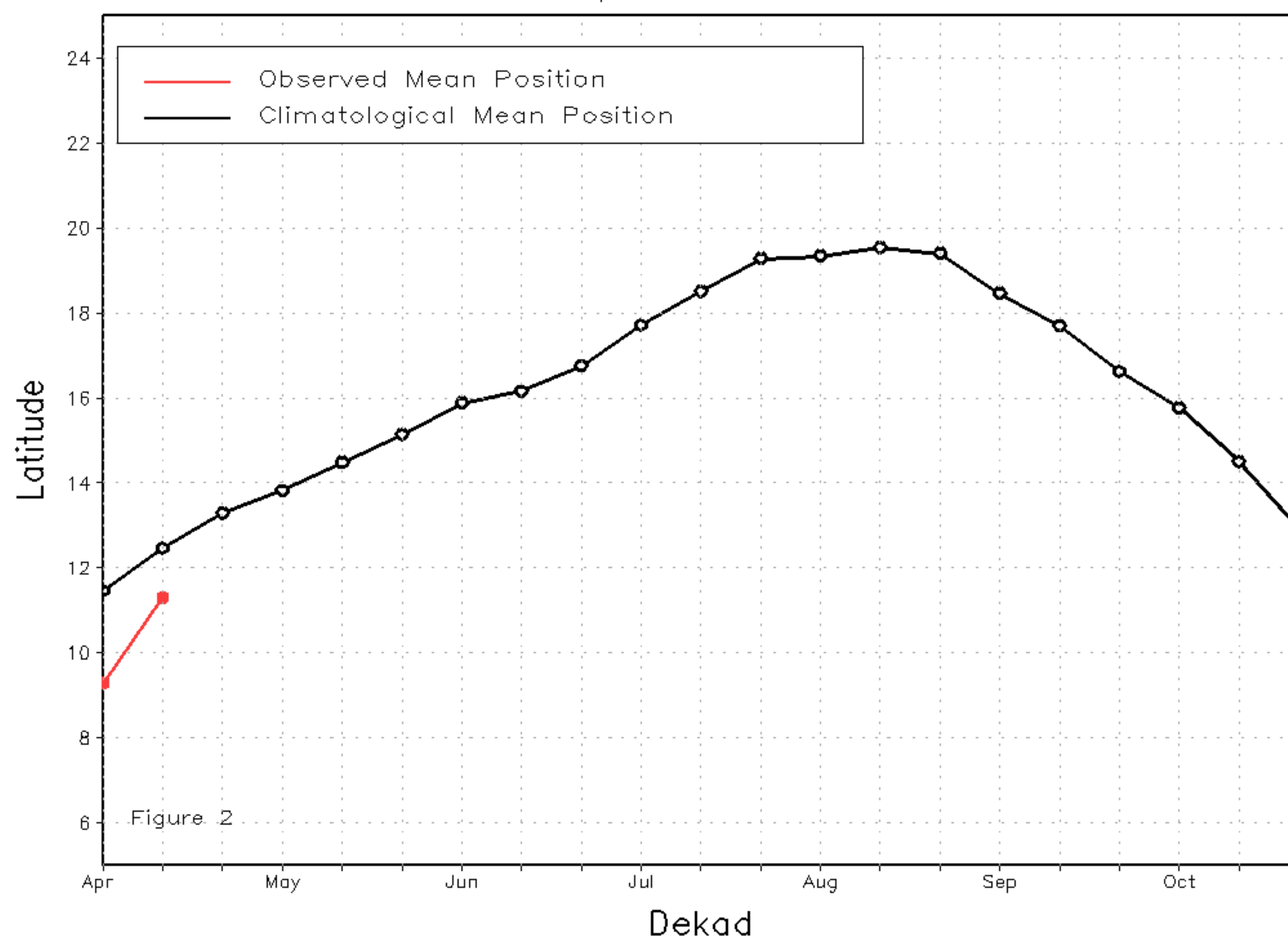
From April 11-20, the ITF has moved northward compared to the previous dekad. The mean western portion of the ITF was approximated at 11.3 degrees N which is 2 degrees further north compared to the previous dekad. This displacement of the ITF explains the increasing trend of rainfall over the Gulf of Guinea countries and the onset of rainfall over southern Burkina Faso, far southern Mali. The mean eastern portion of the ITF was located at 8.9 degrees N, which was located south of the climatological position by 1.7 degrees. Figure 1 displays the current position of the ITF relative to the long-term average position during the second dekad of April and its previous position during the first dekad of October. Figures 2 and 3 are time series, illustrating the latitudinal values of the western and eastern portions of the ITF, respectively, and their seasonal evolutions since April, 2020.

Current vs. Normal Dekadal ITF Position
and RFE Accumulated Precipitation (mm)

April 2021, Dekad 2



Mean Western Portion of the ITF: Averaged 10W to 10E
As of: April 2021, Dekad 2



Mean Eastern Portion of the ITF: Averaged 20E to 35E
As of: April 2021, Dekad 2

