



# CPC Africa Desk InterTropical (ITF) Front Analysis

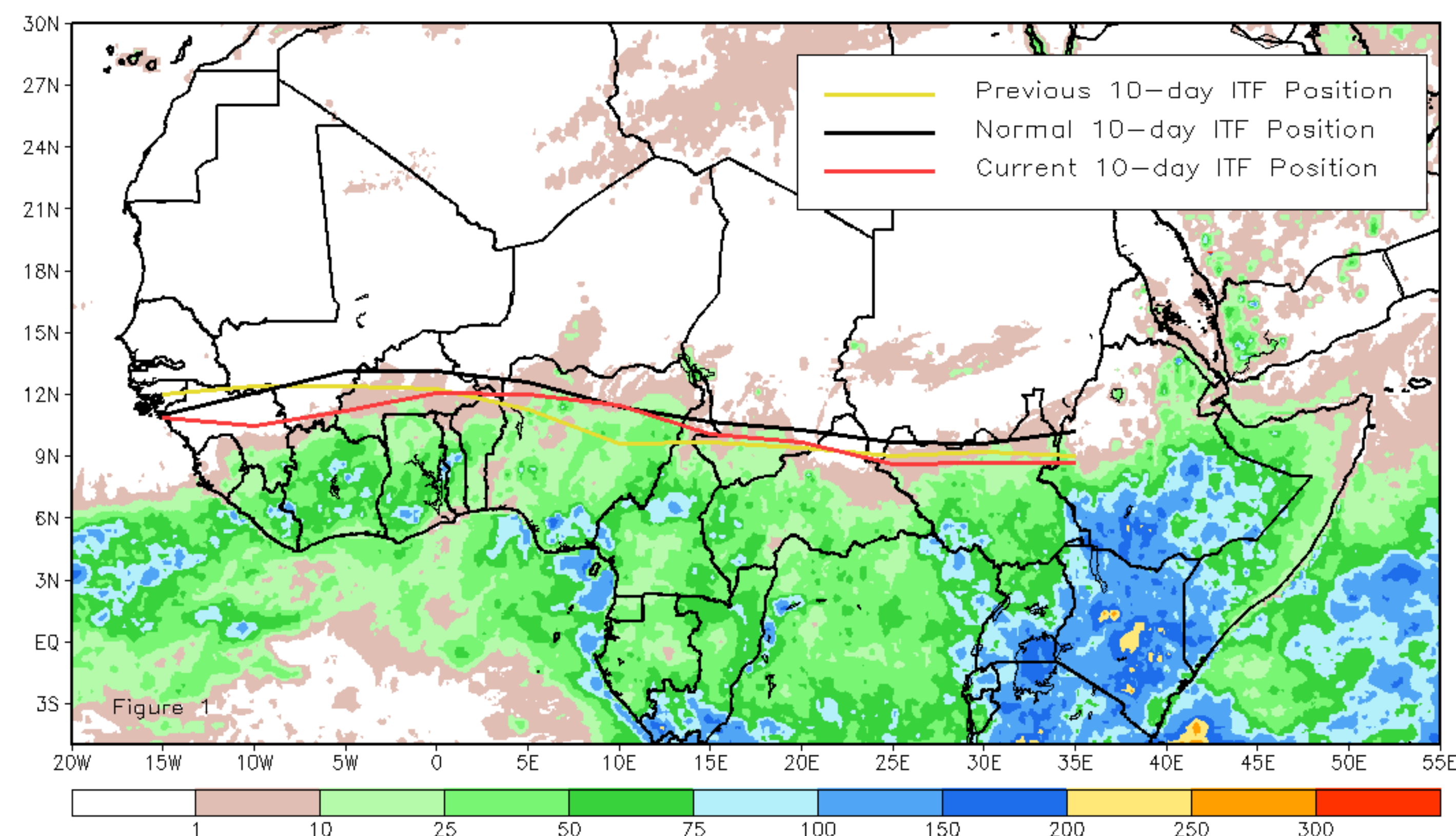
## April 2018, Dekad 2

### Discussion:

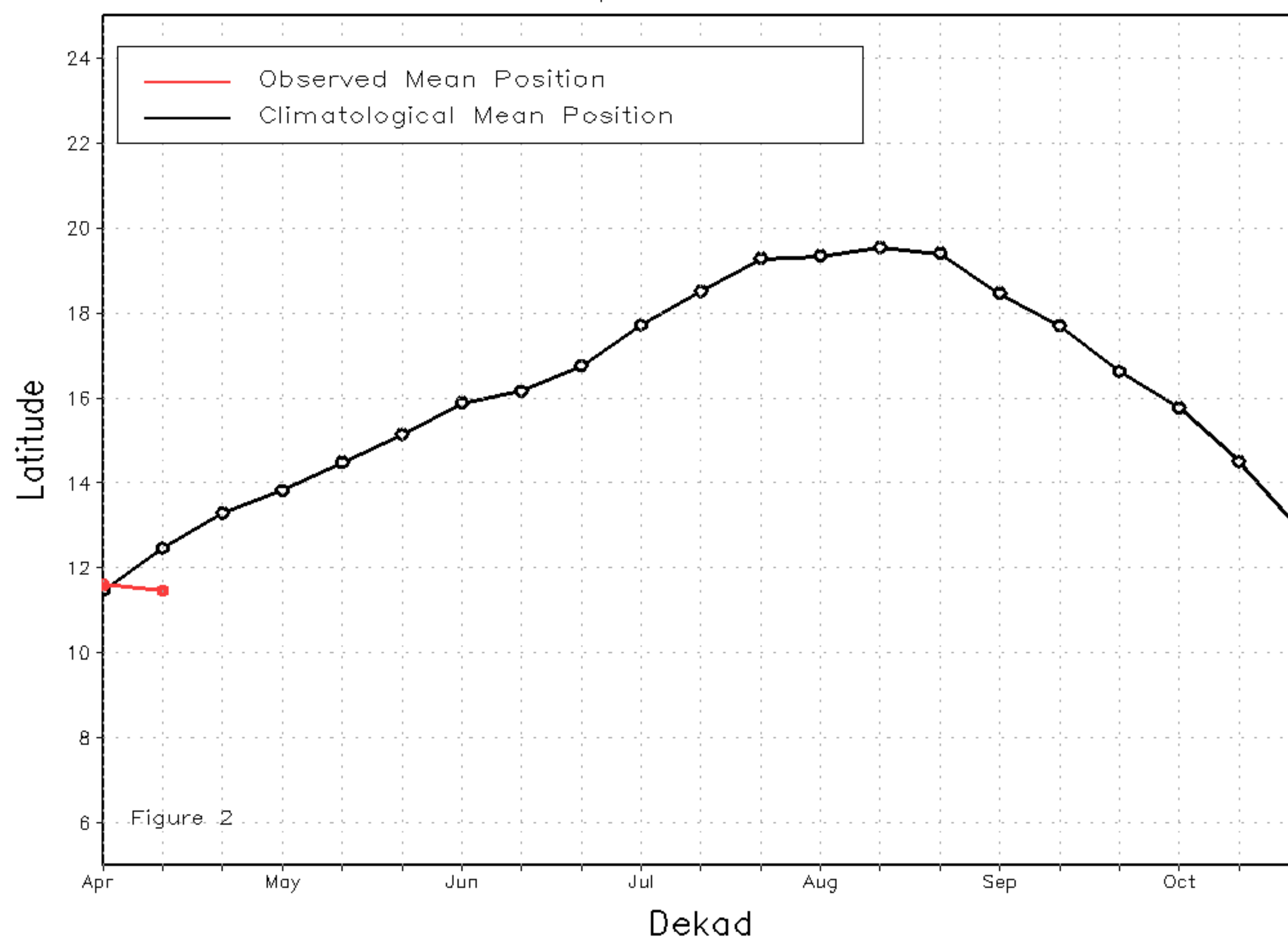
During the 2nd dekad of April 2018, the early seasonal ITF position was, in general, slightly below its climatological normal position over both western and eastern portions of Africa. The mean western (10W-10E) portion of the ITF was approximated at 11.5 degrees N, resting below the mean (12.5N) position during this time of year. In association with this southward lag in the position of the ITF, poor rainfall performance has been observed across the Gulf of Guinea countries. The mean eastern (20E-35E) portion of the ITF was approximated at 9.0 degrees N, and also was below the climatological normal position (9.9N) for mid-April. Unusually, both the eastern and western portions of the ITF retreated slightly south compared to their position during the previous dekad. Figure 1 shows the current position of the ITF relative to the mean climatological position across Africa during the 2nd dekad of April, and its previous position during the 1st dekad of April. Figures 2 and 3 are time series illustrating the mean latitudinal values of the western and eastern portions of the ITF, respectively, and their seasonal evolution compared to climatology since April, 2018.

Current vs. Normal Dekadal ITF Position  
and RFE Accumulated Precipitation (mm)

April 2018, Dekad 2



Mean Western Portion of the ITF: Averaged 10W to 10E  
As of: April 2018, Dekad 2



Mean Eastern Portion of the ITF: Averaged 20E to 35E  
As of: April 2018, Dekad 2

