



CPC Africa Desk InterTropical (ITF) Front Analysis

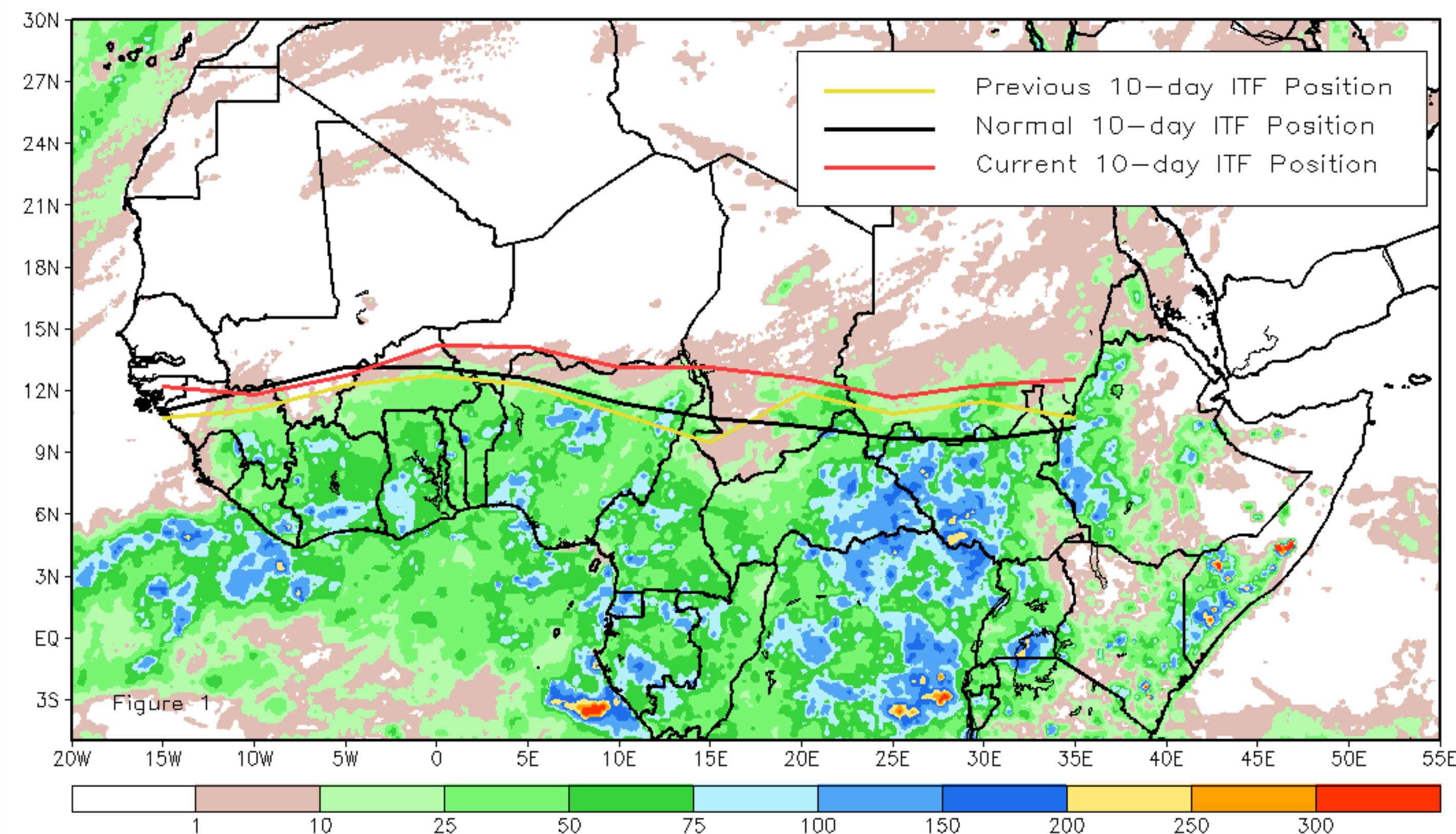
April 2014, Dekad 2

Discussion:

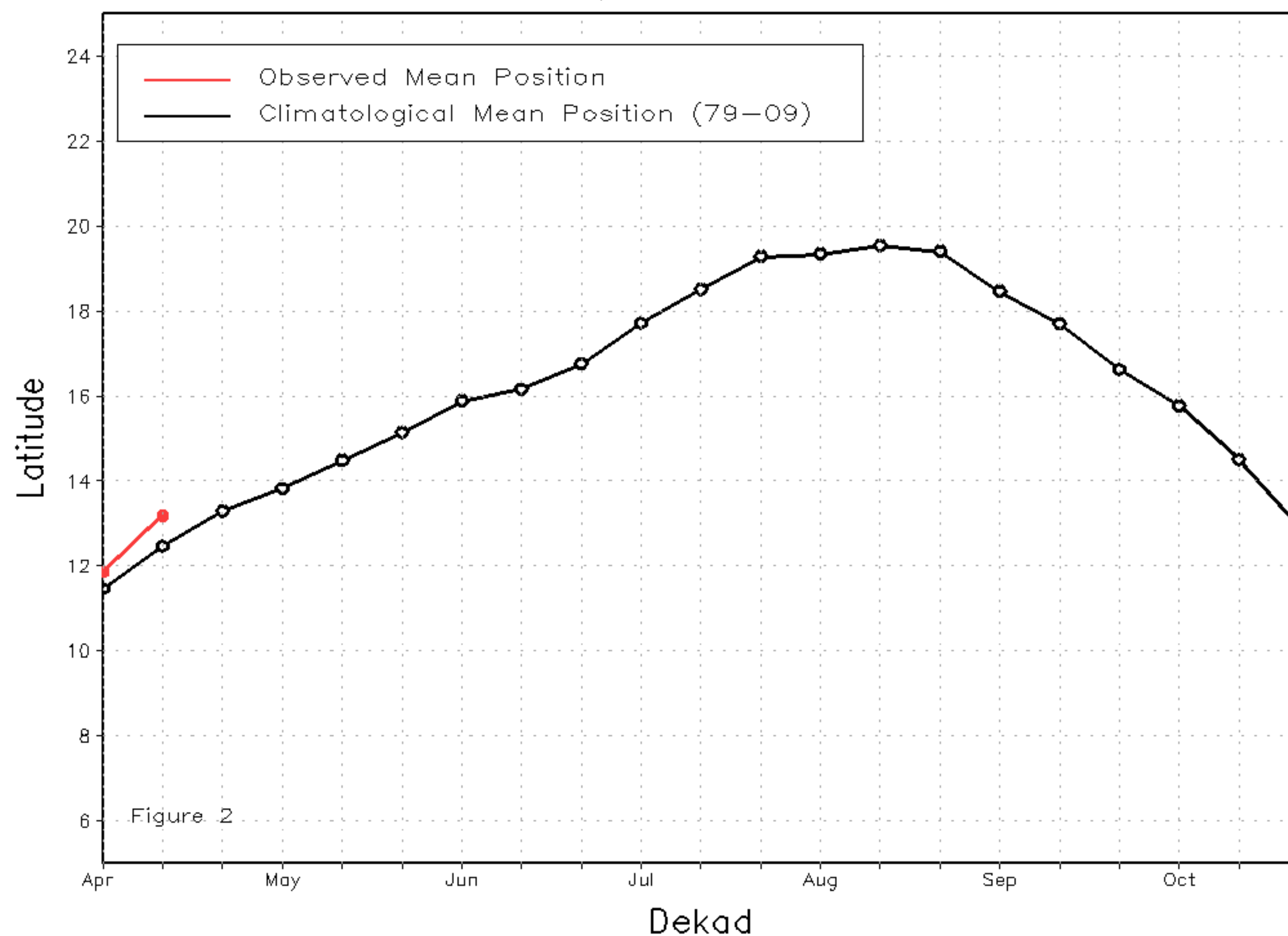
From April 11-20, 2014, the ITF continued its northward progression, with a significant advancement along its eastern segment. The eastern (20E-35E) portion of the ITF approximated 12.3N, which led the mean position by 2.4 degrees. This brought above-average rainfall, with surpluses exceeding 50 mm across eastern CAR and much of South Sudan. The western (10W-10E) portion of the ITF was located along 13.2N and also was to the North of the mean position by 0.7 degree. Enhanced and moist southerly flow contributed to the observed wetter than average conditions over eastern Liberia, Cote d'Ivoire during this period. Figure 1 shows the current position of the ITF relative to its long-term average for the second dekad of April and its former position during the first dekad of April. Figures 2 and 3 are time series, illustrating the mean latitudinal values of the western and eastern portion of the ITF, respectively, and their evolutions since April, 2014.

Current vs. Normal Dekadal ITF Position
and RFE Accumulated Precipitation (mm)

April 2014, Dekad 2



Mean Western Portion of the ITF: Averaged 10W to 10E
As of: April 2014, Dekad 2



Mean Eastern Portion of the ITF: Averaged 20E to 35E
As of: April 2014, Dekad 2

