



CPC Africa Desk InterTropical (ITF) Front Analysis

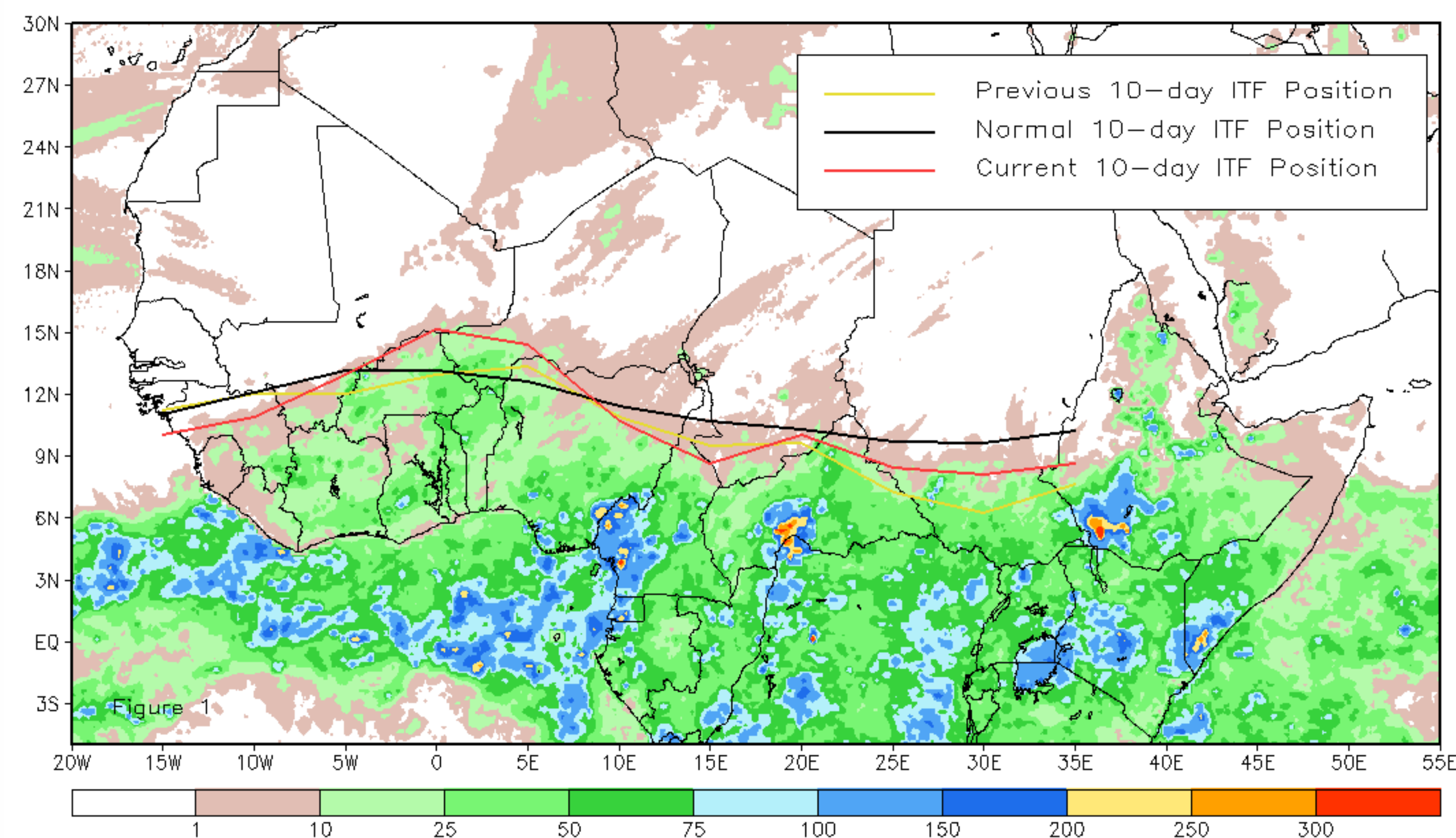
April 2013, Dekad 2

Discussion:

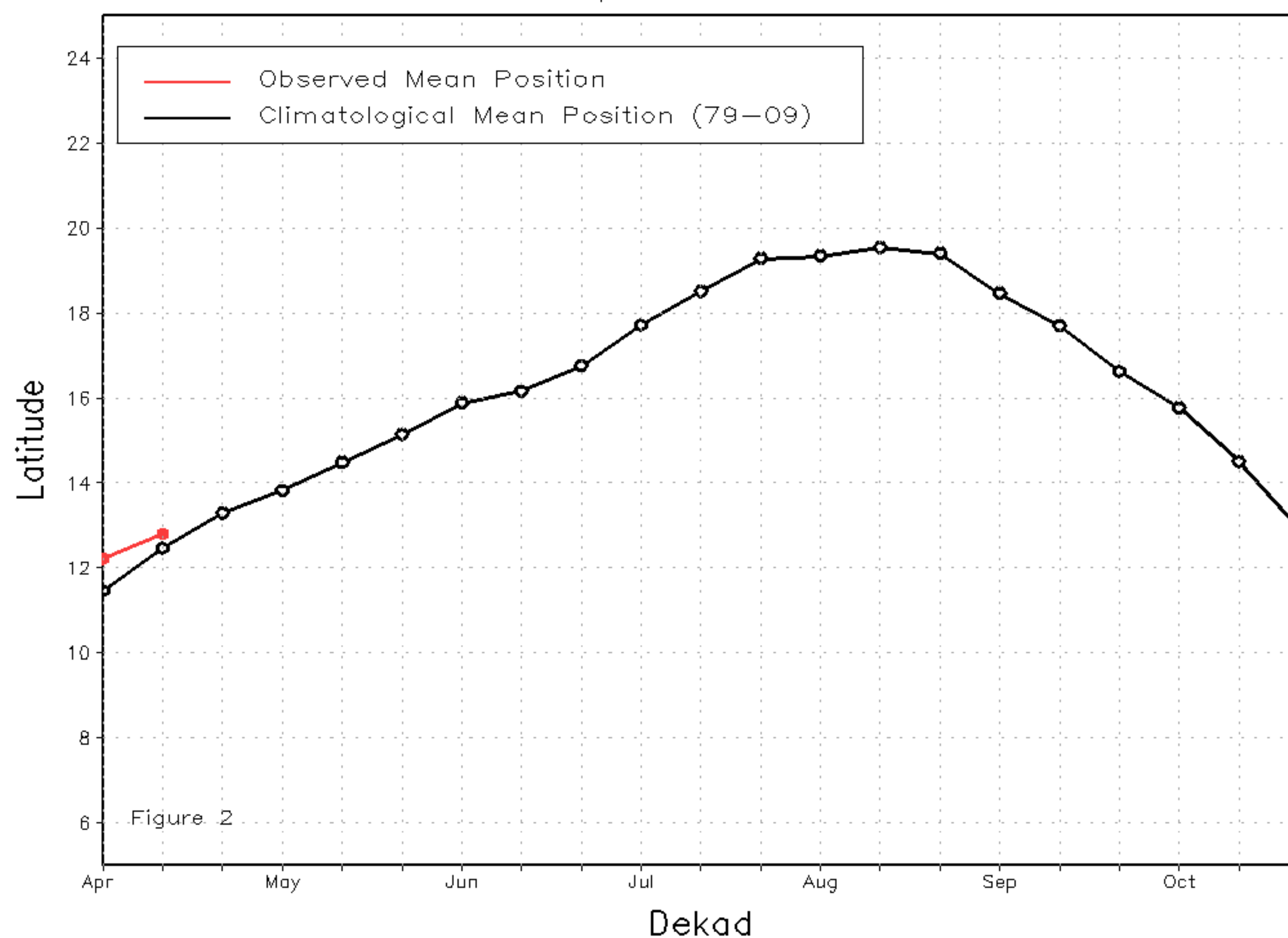
From April 11 - 20, 2013, the ITF experienced an above-average northward advancement across the central portion of West Africa; though it still lagged behind the mean climatological position elsewhere. The mean western segment of the ITF approximated 12.8 degrees North and led the mean position by 0.3 degrees due to an anomalous surge of moist southerly winds across the Gulf of Guinea, bringing moderate to locally heavy rain as far north as Burkina Faso and western Niger. In contrast, the ITF mean eastern portion was located near 8.8 degrees North and simply trailed the average position by 1.1 degrees due to continued intrusion of dry air from the North. Figure 1 shows the current ITF position relative to the climatological average for the second dekad of April and its previous position during the first dekad of April. Figure 2 and 3 are time series, illustrating the latitudinal mean of the western and eastern portion of the ITF, respectively, and their evolutions since the start of April.

Current vs. Normal Dekadal ITF Position
and RFE Accumulated Precipitation (mm)

April 2013, Dekad 2



Mean Western Portion of the ITF: Averaged 10W to 10E
As of: April 2013, Dekad 2



Mean Eastern Portion of the ITF: Averaged 20E to 35E
As of: April 2013, Dekad 2

