



CPC Africa Desk InterTropical (ITF) Front Analysis

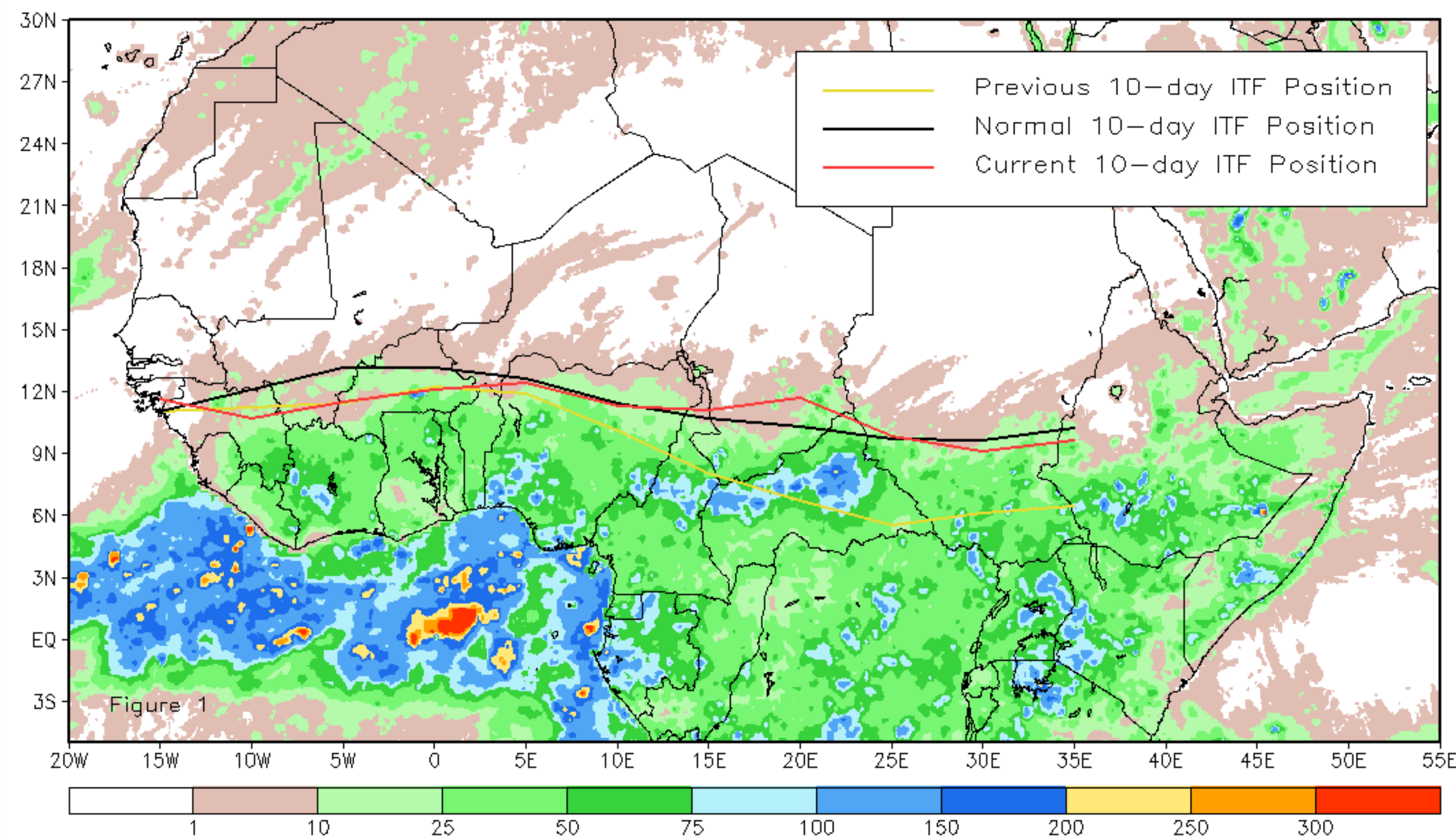
April 2012, Dekad 2

Discussion:

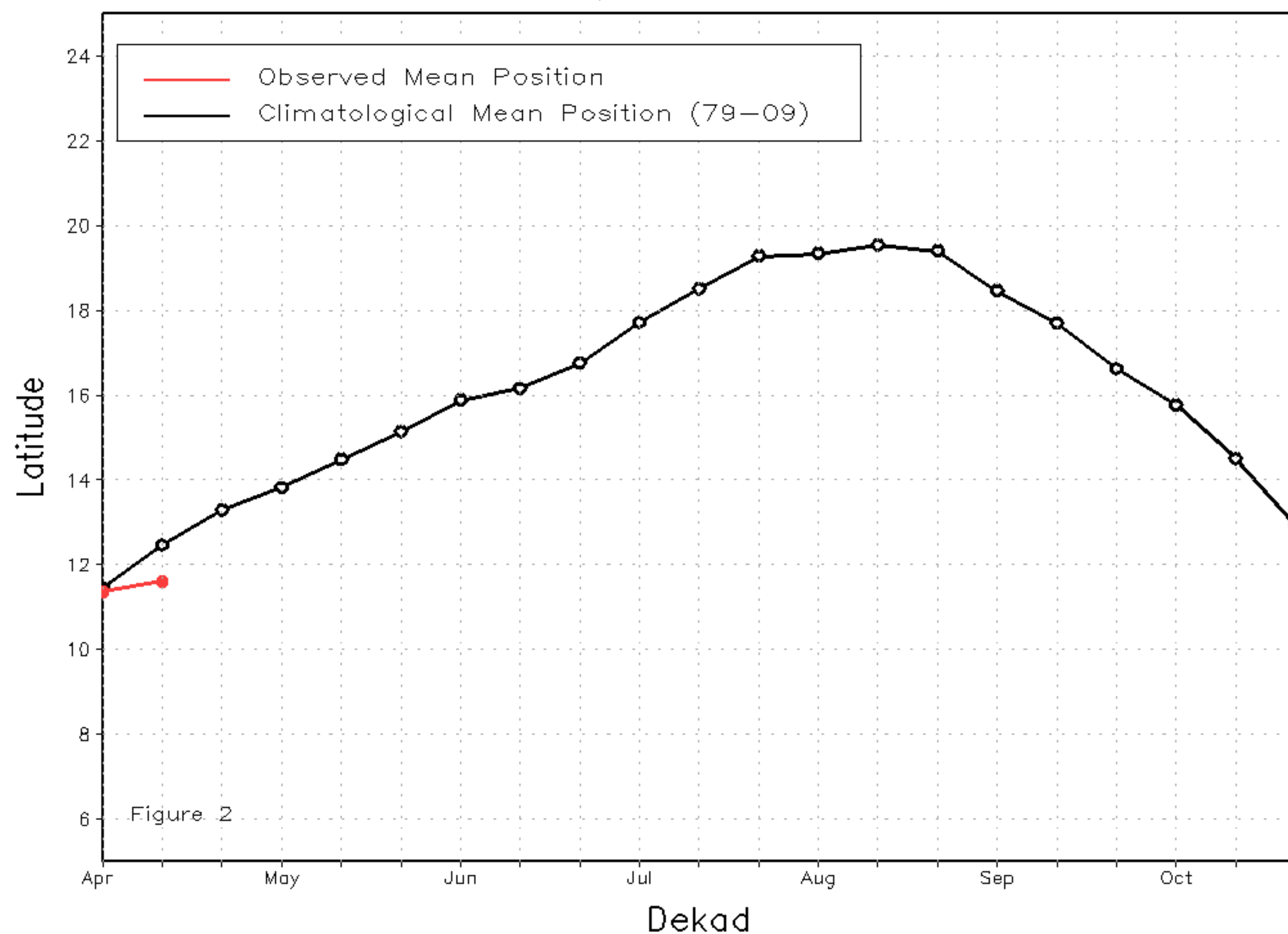
From April 11-20, 2012, the ITF continued its northward progression across Africa. The eastern segment of the ITF experienced a significant advancement relative to its movement during the first dekad of April due to a surge of moisture associated with an enhanced low-level convergence across northern CAR and bordering countries. Meanwhile, the western segment of the ITF advanced slightly to the north compared to that of the previous dekad as strong northerly winds prevailed across the region and acted as blocking pattern to the ITF.

portion of the ITF was located approximately at 11.6 degrees North, which trailed the climatology mean by 0.9 degree, while the eastern portion of the ITF approximated 10.1 degrees North, leading the climatological mean position by 0.2 degrees. Figure 1 shows the current ITF position relative to the climatological average position for the second dekad of April and its previous position during the first dekad of April. Figures 2 and 3 are time series, illustrating the latitudinal mean of the western and eastern portion of the ITF, respectively, and their evolutions since the start of April.

Current vs. Normal Dekadal ITF Position
and RFE Accumulated Precipitation (mm)
April 2012, Dekad 2



Mean Western Portion of the ITF: Averaged 10W to 10E
As of: April 2012, Dekad 2



Mean Eastern Portion of the ITF: Averaged 20E to 35E
As of: April 2012, Dekad 2

