



# CPC Africa Desk InterTropical (ITF) Front Analysis

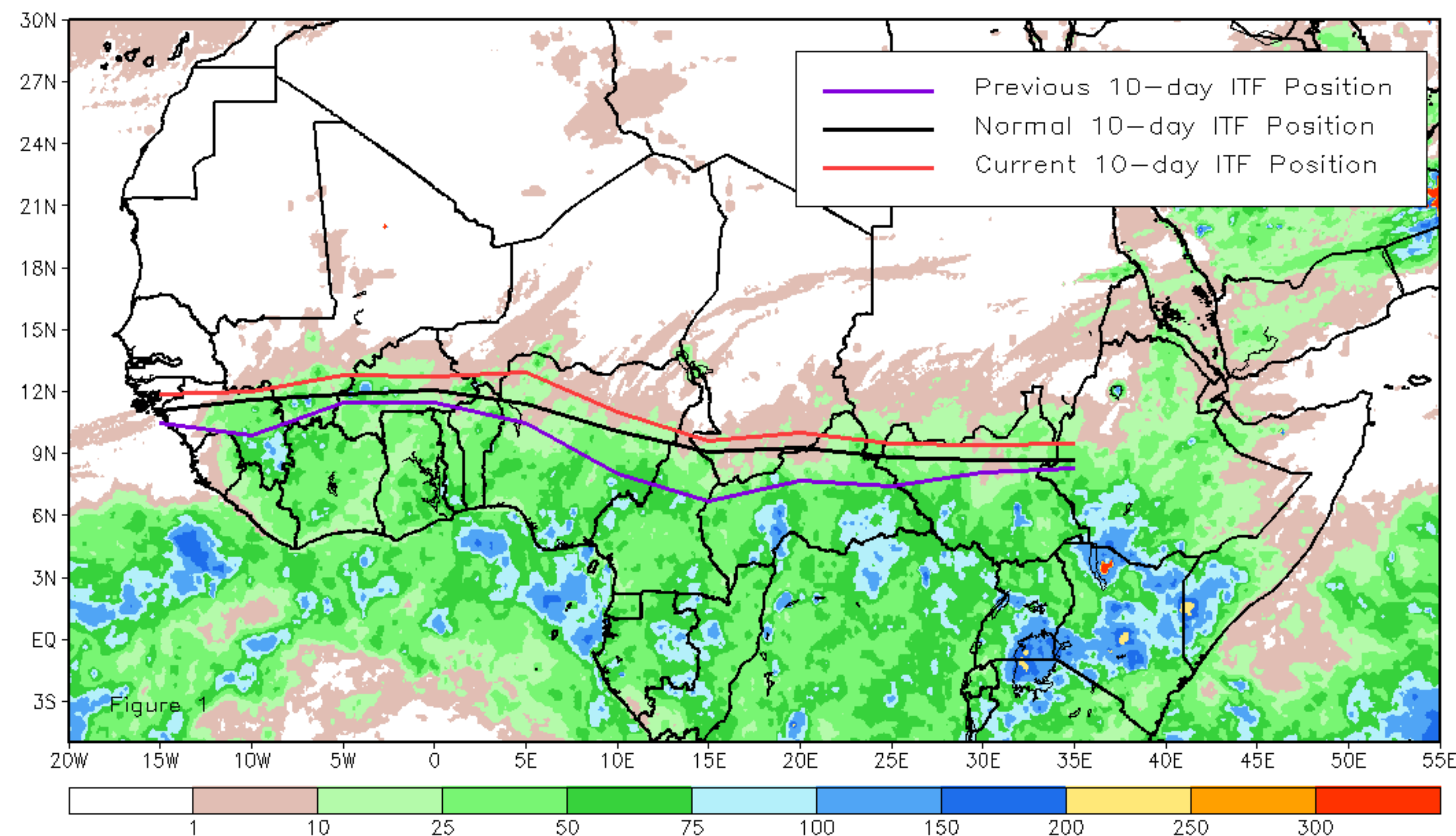
## April 2024, Dekad 1

### Discussion:

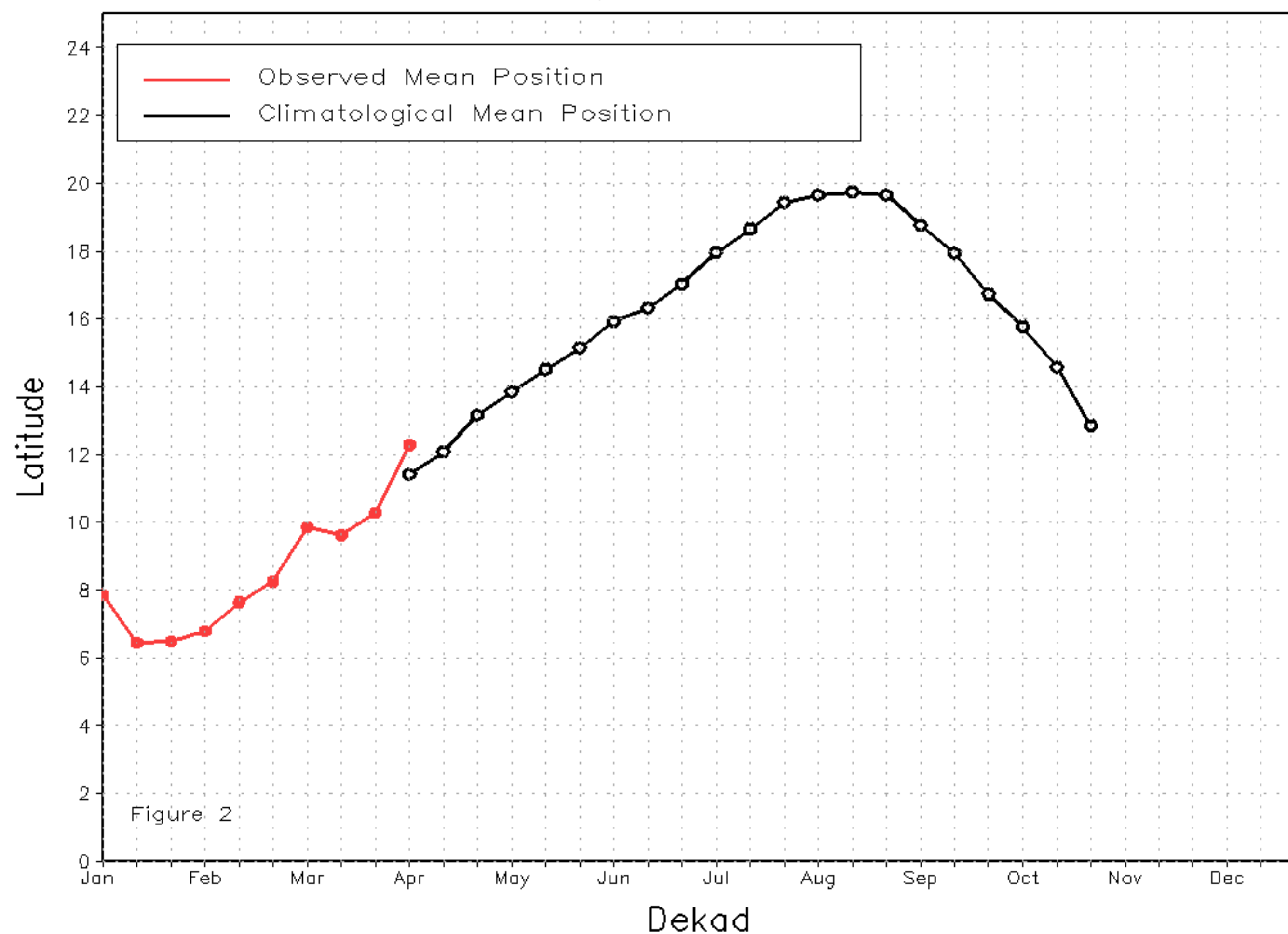
Between April 1 and 10, the Inter-Tropical Front (ITF) propagated north relative to its previous position. The western (10W-10E) portion of the ITF was located approximately at 12.3N, which was above the climatological position by 0.9 degree. Also, at the eastern (20E-35E) portion, the ITF was approximated at 9.6N, which was above the long-term average position by 0.7 degree. Figure 1 displays the current position of the ITF relative to the climatological position during the 1st dekad of April and its previous position during the 3rd dekad of March. Figures 2 and 3 are time series, illustrating the latitudinal positions for the western and eastern portions of the ITF, respectively, and their seasonal evolutions since the beginning of April 2024.

Current vs. Normal Dekadal ITF Position  
and RFE Accumulated Precipitation (mm)

April 2024, Dekad 1



Mean Western Portion of the ITF: Averaged 10W to 10E  
As of: April 2024, Dekad 1



Mean Eastern Portion of the ITF: Averaged 20E to 35E  
As of: April 2024, Dekad 1

